

Weekly Poultry Report

Eastern Pennsylvania And New Jersey

Prices trending lower, within an unchanged range on light type hens. Demand fair, but generally less aggressive than in past weeks as live offerings increased and call from dressed buyers declined. Some slaughter plants only working part-time as they are having difficulty in clearing finished product and wish to limit storing at this time. Offerings of heavy type hens fully adequate for a fair demand. Prices paid At Farm: Light Type Hens: 5½-7½ M 7-7½ in Pennsylvania; mostly 6½-6 in New Jersey. Heavy type hens: Tfewr.

generally 1c higher than this week's levels. Less than trucklot prices ranged unchanged on plant grade while unchanged to 1/2c higher on US Grade A. Live supplies ample though weights often lighter than desired due to poor growing conditions which prevailed last week. Undertone firm.

Pool trucklot prices for Thursday arrival at terminal markets: U S Grade A 24½-26½ Mostly 25½

Plant Grade 24-25 Mostly 24½ Special packs including 1¾-2, 3½ # sizes Tfewr.

Fogelsville

August 4, 1970

(Prices paid dock weights, cents per pound, except where noted) Hens, Heavy Type 7-15½; Pullets 13-27, Roasters 11½-25 20-25, Rabbits 10-49 30-45; Guineas 130½-135, Pigeons (Per Pair) 80-1.25.

Total Coops Sold 558.

Delmarva

Ready-to-Cook movement continues to improve. Advance interest fairly good with prices

Try A Classified Ad It Pays!

Federally Inspected Livestock Slaughter

(For week starting August 3, 1970)

	Cattle	Hogs	Sheep
Week to date	458,000	1,033,000	151,000
Same period last week	440,000	1,080,000	145,000
Same period last year	465,000	1,077,000	149,000

Estimated daily livestock slaughter under Federal Inspection.

Green Dragon

The Ephrata Green Dragon Market reported receipts of 146 head of all types and classes of cattle, Friday, July 31, 1970, with fair attendance and prices steady to weaker.

Load of Canadian cows — Springers — \$365-516. Fresh 450-575. One outstanding Pure Bred brought 810 (calf—105).

Load of Upstate cows—Springers 500-580. Fresh 395-510. First Calf Heifers 340-390

Load of Mixed cows—Springers 410-470. Milkers (lesser quality) 210-355

Load of New York State fresh cows, 400-480

Load of New York State cows, 385-420.

Load of local cows (springers). 350-480. One Pure Bred Stock Bull offered, 322.

HAY MARKET JULY 31

Eight loads of hay — four loads of alfalfa, \$28.50-38.00 a ton; two loads timothy, 35.50 and 38.50; two loads mixed, 24.00 and 33.50.

Ten loads of straw, 33.50-39.50.

HAY PRICES

For Southeastern and South Central Pennsylvania

August 3, 1970

All hay No 2 and better, prices paid by dealers at the farm, price per ton.

Hay and straw mostly steady. Demand good for better grades of hay

Alfalfa 25 00-35 00, few sales to 40 00

Timothy hay 20 00-28 00

Mixed hay 25 00-35 00

Straw 20 00-28 00

Mulch 10 00-15 00

Reported by Bureau of Markets Pa. Dept. of Agriculture.

New York Eggs

Price levels generally unchanged. Street trading activity irregular, slow to occasional fair with prices competitive. Receipts light to moderate and restricted to anticipated needs with additional offerings readily available. Dealers floor stocks of large and mediums while not burdensome are in excess of needs, extra large are generally

Region	Large	Medium	Small
Northwest	31 29	20 20	13 10
Central West	28 27	18 18	11 10
South West	28 27	18 18	12 10
Midwest	32 32	20 20	10 10
Southeast	32½ 32½	21 21	11½ 11½
Northeast	35½ 35½	23 23	13½ 13½
National Average	32½ 32	21 21	11½ 11½

Weekly New York Egg Mkt.

From Monday, August 3rd to Friday, August 7th.

	Mon.	Tues.	Wed.	Thurs.	Fri.
WHITE					
Fcy Ex Large	40	39	39	39	39
Fcy Large	35	35	35	35	35
Fcy Mediums	27	27	27	27	27
Fcy Pullets	18	18	18	18	18-18½
Fcy Peeweels	14	14	14	14	15
BROWN					
Fcy Large	39	39	39	39	39
Fcy Mediums	Unquoted				
Fcy Pullets	Unquoted				
Fcy Peeweels	Unquoted				
Standards	32	31	31	31	31
Checks	21	21	21	21	21

Tone — Market steady. Ample offerings of large All other grades in somewhat better position.

Copyright 1970 by Urner Barry Publications

Chicago

(Continued from Page 2)

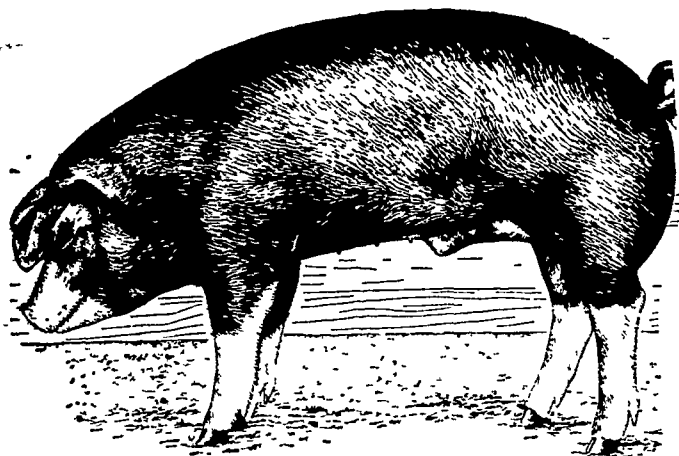
Prime and 72 percent Choice last week, and 15 percent Prime and 73 percent Choice last year. Numbers of Steers weighing over 1300 lbs substantially reduced from last week. The average weight of Slaughter Steers was expected to be about 1160 lbs, lightest since last December, compares with 1204 lbs last week which was the heaviest in three months, and 1156 lbs last year. Average cost of Slaughter Steers, estimated at

31.10, compared with 31.30 last week, and 31.51 last year. Heifer supply mainly high-Good to low-Prime weighing 850-1000 lbs with the average weight expected to be about 915 lbs, compared with 923 lbs last week and 918 lbs last year.

SLAUGHTER STEERS — On Wednesday, Prime 1150-1375 lbs yield grade 3 and 4 32.25-32.50, eight loads at latter price. High-Choice and Prime 1150-1375 lbs yield grade 2 to 4 30.75-31.75, mixed Good and Choice 30.00-30.75, Good 27.50-30.00, Standard and low-Good 25.75-27.50

SLAUGHTER HEIFERS — On Wednesday, high-Choice and Prime 950-1025 lbs yield grade 3 and 4 30.50-30.75, Choice 850-1000 lbs yield grade 2 to 4 29.25-30.25, mixed Good and Choice 28.50-29.25, Good 26.00-28.50.

Get fast, low cost gains



with the

BEACON LIFE CYCLE SWINE FEEDING PROGRAM

Market pigs go from birth to butcher in minimum time when fed according to the Beacon program. Gains are fast and economical, feed conversion is efficient.

Under most conditions, the sooner pigs can be marketed the more profit for the grower. Get your pigs to market fast with the Beacon Life Cycle Feeding Program.



BOMBERGER'S STORE
Elm

GEHMAN FEED MILL, INC.
Denver

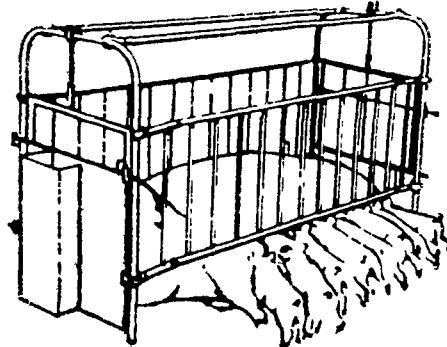
O. KENNETH McCracken
Manheim

I. B. GRAYBILL & SON
Strasburg

H. JACOB HOOBER
Intercourse

EARL SAUDER, INC.
New Holland

HUDSON PROFI-MATIC FARROW PENS



ADJUSTABLE WIDTHS; High Carbon Steel Frames

For heavy use — hold nervous gilts up to largest of sows. "Railroad steel" frames spring back when others fold up. Sides adjust to make 22, 24 or 26 inch pen widths. Use singly, or join with panels for row-type installation.

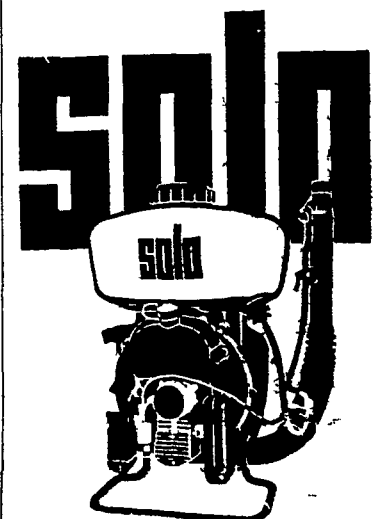
WE SELL, SERVICE AND INSTALL



E. M. HERR EQUIPMENT, INC.

R. D. 1, Willow Street 717-464-3321

Try A Classified Ad It Pays!



MIST BLOWER

2 models available
3 and 5 HP

- Horizontal spraying distance 25 ft. and 35 ft.
- Liquid Tanks 2½ gal. and 3 gal.

Lester A. Singer

Lancaster County's Only Dealer Specializing In Sprayer Sales and Service" Ronks, Pa. 687-6712