

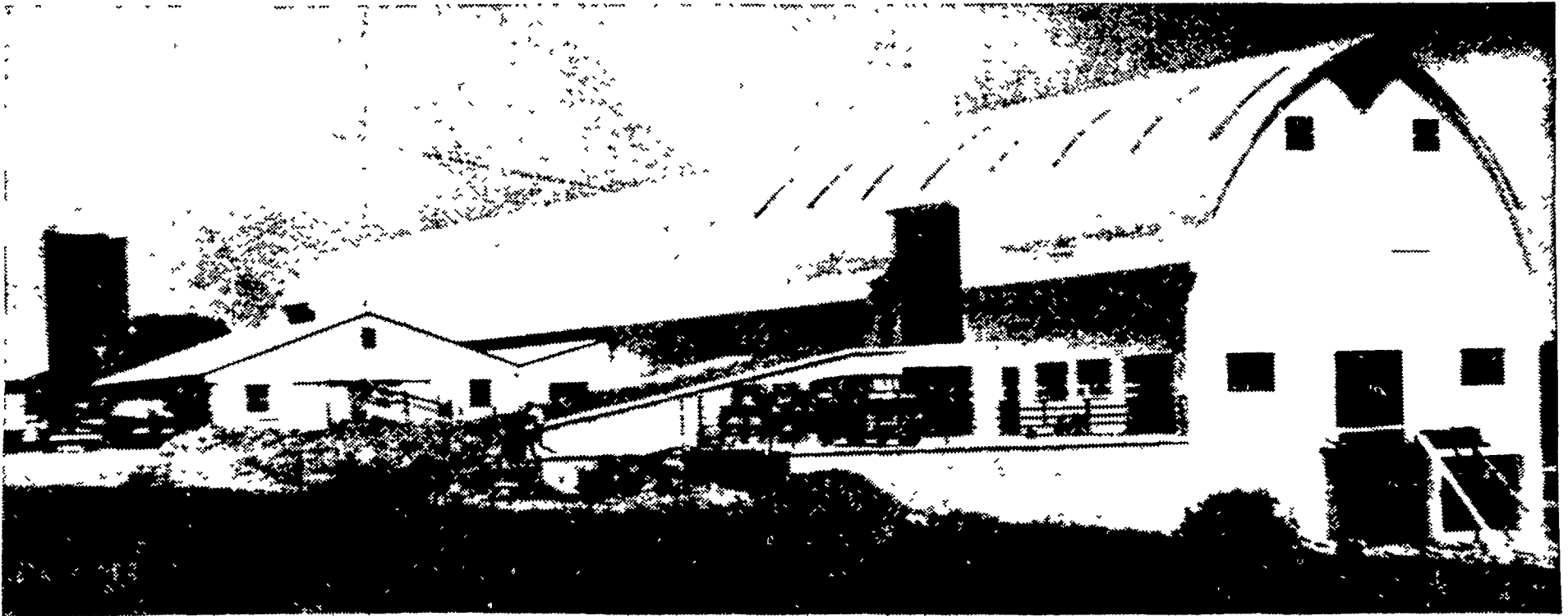
Lancaster Farming

VOL 15 NO 33

Lancaster Farming, Saturday, July 11, 1970

\$2.00 Per Year

B & W Farm Sets July 17 Sale



The exterior of the Black & White Holstein Farm barn, including the new section on the right. The new section is mostly completed,

except for some touch-up and interior work. This photo was taken from the road along the railroad tracks leading into the facility.

The Black & White Holstein Farm will hold a grand opening of its expanded barn facilities with an anniversary sale of 152 cows, beginning at 7 p.m. Friday, July 17. Charles C. Myers, owner, announced this week.

The completed barn facility at 1500 Rohrerstown Road will be 322 feet long, including the new 130 foot addition.

The addition, Myers said, doubles the barn's capacity.

Workmen, headed by Henry S. Lapp, Gap RD1, were working hard this week putting on the finishing touches to make the barn ready for the opening.

By Monday, the workmen were pouring the last load of concrete

Stalls for the animals were also well under way.

The Holstein Farm is a leading local source of Holstein cows.

Myers said he generally has about 100 animals on hand and he usually sells about 100 each week.

Private sales are held daily for interested farmers, and an auction is held each third Friday of the month. He buys and sells every day, he said.

Myers may keep an animal two days or a month, depending on the demand.

The Holstein Farm helps with financing up to three years.

George Sipple, a Michigan cattle dealer, was hired January 1 as manager of the Holstein Farm.

Besides the main floor, the new section of the barn has a

large ground floor area for calves, as well as a third floor hay area.

Myers, who lives in a home

near the area, grazes the animals on nearby land. He actually has a 100 cow dairy herd and must do practically everything any other

dairyman must do, including milking and calving.

The difference is that Myers' (Continued from Page 6)

Penn 'U' Livestock Day to Feature Swine, Beef Cattle, Sheep, Horses

The Pennsylvania Livestock Field Day will be held at Penn State University Thursday, July 23 from 10 a.m. to 2:15 p.m.

The annual educational event is sponsored jointly by the Pennsylvania Livestock & Allied Industries Association and the Penn State Department of Animal Science, College of Agriculture.

Bus transportation will be available at 6 a.m. from the center of the Lancaster Shopping Center parking lot at 6 a.m. for \$5 per person. Reservations for the trip should be in to Max Smith, county agent, at the Farm and Home Center, Lancaster, by Monday, July 20, along with the \$5.

Although it is preferred that persons travel by bus, farmers can go by auto, but should also notify Smith so that lunch reservations can be made. He can be contacted at 394-6851.

The local participation in the state-wide program has been coordinated by the Livestock Tour Committee of the Penn State extension service, consisting of Carl B. Herr, 840 Penn Grant Road, Lancaster; J. Harold Frey, Marietta RD1; Melvin G. Rohrer, Litz RD3; Glenn Wissler, Ephrata RD1; and Smith.

Smith said the committee now is considering a charter plane flight to the Midwest to

tour modern feeder cattle operations.

Commenting on the Penn State trip July 23, Smith urged local livestock farmers to make the trip and said the timing of the trip probably will fit in with the usual late July lull in most farming operations, provided wheat has been harvested.

Morning programs July 23 will be held at different sites, depending on the individual's interest. Choices include swine, beef cattle, sheep and horses, all at 10 a.m.

At the Swine Center, a type discussion will be held on judging two boar classes, with junior judging contest winners to be selected. The swine group will have three tour possibilities: a tour of swine facilities with V. E. Hazlett, meat animal evaluation center with Robert Kimble, or question and answer discussion period on swine management with J. L. Gobble, G. W. Sherritt and D. E. Younkin.

At the Beef Cattle Center, there will be cow calf matching (Continued on Page 7)

Lancaster County 4-H Youths Win York Livestock Judging

Lancaster County 4-H members took high individual and team honors at the York County 4-H Livestock Judging Contest at Stonaire Farms, Lewisburg Friday from 9:30 a.m. to 3:30 p.m.

Gary Dean, Strasburg RD1, was the outstanding individual contestant. He took first places in the beef and swine judging and fifth in sheep to register the top individual score and lead the county team to victory.

The scores of the top three individuals from each county were used to determine the county winner, reported Max Smith, county agent.

Out of a possible 450 points, 150 for each of the three events, Dean had 410. He got 143 in beef cattle, 129 in sheep and 138 in swine.

Ed Donough, Manheim RD3, was second overall with 402

points including 140 and third place in beef cattle.

The third high Lancaster County contestant overall was Clark Stauffer, Ephrata RD1, with a fifth place finish and 388 points.

Ray Blubaker, Rohrerstown Road, Lancaster, finished sixth overall with 381 points and a second place 142 in beef cattle.

Buinnell Buchen, Manheim RD3, was ninth overall with 375 points and third in swine with 135.

Following Lancaster County's commanding 1200 point team total was York County with 1128, Cumberland County with 1113, Lebanon with 1061 and Adams 1026.

Victor Longenecker of Elizabethtown, RD3 was the 4-H leader in charge of the Lancaster County group.

State Young Farmers To Hold Fourth Annual Summer Picnic

The Pennsylvania Young Farmers will hold the fourth annual summer picnic next week.

The two-day event will be held at the University Motor Inn and Perkin's Pancake House on the north side of Lewisburg along U.S. Route 15 Friday and Saturday, July 17 and 18.

The event will be hosted by the Mifflinburg Young Farmers and the Lewisburg Young Farmers of Union County.

While state officers hold meetings, tours will be conducted to the Pennsylvania House furni-

ture showroom and to historic homes in the Lewisburg area.

The farm tour Friday afternoon will include several dairy farms, a modern hog farming operation, a large poultry operation with an on-farm feed mill and an egg grading and candling operation, and a beef finishing operation.

The picnic on Saturday will feature a chicken barbecue at the Mifflinburg Community Park, where a picnic pavilion, tennis courts, a public swimming pool, badminton and volleyball courts will be available.