

Across the  
Editor's Desk

Nelson Weaver  
Poultry Scholarship



Victor F Weaver, Inc has forwarded a picture of Nelson Weaver, winner of the firm's first poultry scholarship. While we ran the story of the scholarship recently, we think our readers will want to see the photo.

Try A  
Classified —  
It Pays

Give  
Your Cattle the  
Pasture They Prefer—  
**988**  
Sorghum-Sudangrass  
Hybrid from  
**PIONEER**

Strip tests prove it: Cattle prefer Pioneer brand sorghum-sudangrass hybrid over other brands. That means they'll eat more . . . . make more meat or milk. Unbeatable hot-weather pasture or green-chop. Can be planted on diverted acres and grazed after September 1. Treat your cattle to the pasture hybrid they like best!

See or Call Your  
Nearest **PIONEER**  
Salesman



**PIONEER.**  
BRAND  
SORGHUM

Pioneer is a brand name; numbers identify varieties. © Registered trademark of Pioneer Hi-Bred Corn Company, Des Moines, Iowa, U.S.A.

● **Have You Heard?**  
(Continued from Page 21)

refrigerator, dishwasher and carpeting you may want to shop around for the best credit plan to use in buying these items.

There are many ways to finance these durable goods. Some methods will cost two and one-half times the purchase price and others will cost less.

For example, a comparative cost of credit for items costing \$1,000, financed through a seven and one-half per cent home mortgage over 30 years, will actually cost \$2,520. The same items, financed through a department store at two per cent interest per month for 12 months, will cost \$1,125. Through a bank loan at eight per cent interest over 12 months, the cost would be \$1,080.

Many of these durable items will need replacing in eight to 14 years. If they are financed with your mortgage, you will be

paying for wornout items after you have replaced them with new ones. Actually, you will be paying on two of the same items at the same time.

You do have alternatives. Compare credit cost and select the one which offers you the best terms. You can anticipate your needs and save money in advance and then pay cash. In this way your money can be earning interest while you are waiting to buy these items.

It has become a practice in recent years to include many durable goods in home mortgages. Check the terms on these items before you buy or build a house. It's true the home loan mortgages rate of interest is the best rate you will find. But it is the long term paying that increases the cost.

If your mortgage will allow you to pay ahead of schedule on the durable items with no penalty, this may be your best source of credit.

**For good production next lactation,**



**FEED PURINA  
DAIRY CONDITIONER**

As a dairyman, you know that good milk production doesn't just happen. It's something you plan for by establishing a herd with the genetic potential for good production, then managing and feeding your cows so they'll produce up to their bred-in ability.

Many successful local dairymen also plan for good production with a proven program of dry cow feeding. They need Purina Dairy Conditioner, a research-proven ration to help give dry cows body condition they need for good production after they freshen.

Purina Dairy Conditioner is an extra-palatable 12½ percent protein ration. It's fortified with vitamins A and D plus extra phosphorus to help guard against milk fever.

Purina Dairy Conditioner is low-cost, too, because the amounts you feed depend on your cows' condition and on the quality of the roughages you feed. For example, a cow dried off in good condition being fed high-quality roughages would require less Dairy Conditioner than a cow in only fair condition being fed fair quality roughages.

Drop in soon and get your free copy of the Purina Dry Cow Program folder. We'll be glad to show you how Purina Dairy Conditioner can help you prepare your dry cows for good production next lactation.

**John J. Hess, II, Inc.**  
Ph: 442-4632  
Paradise

**James High & Sons**  
Ph: 354-0301  
Gordonville

**West Willow  
Farmers Assn., Inc.**  
Ph: 464-3431  
West Willow

**Wenger's Feed Mill  
Inc.**  
Ph: 367-1195  
Rheems

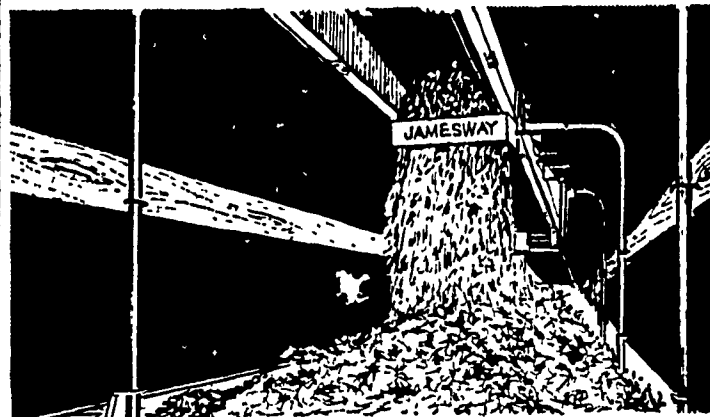
**Ira. B. Landis**  
Ph: 394-7912  
1912 Creek Hill Rd., Lanc.

**John B. Kurtz**  
Ph: 354-9251  
R. D. 3, Ephrata



**For Full Market Reports  
Read Lancaster Farming**

**JAMESWAY  
Volume-Belt Cattle Feeder**



**Feeds Fast without Separation**



- \* Big Capacity Belt
- \* Simple Design - Low H.P.
- \* Galvanized Hood
- \* Works In-Barn or Out

Come in Today for Details.

**LANDIS BROS., INC.**

1305 Manheim Pike

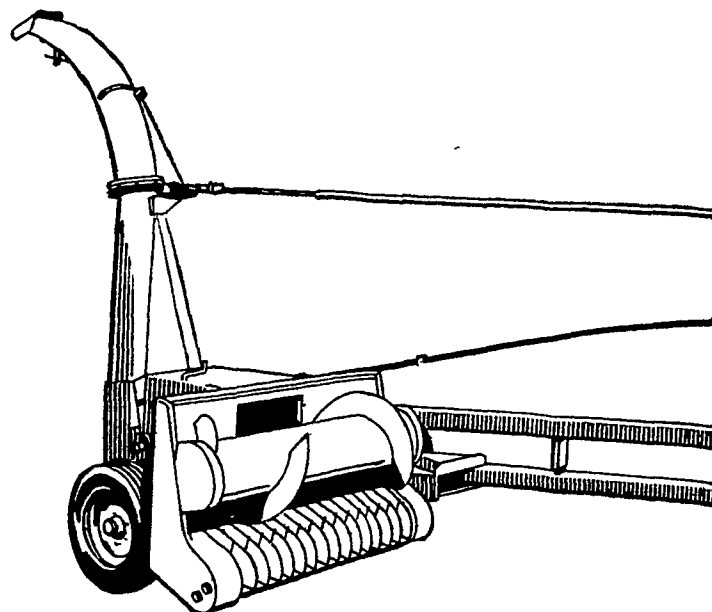
Lancaster, Pa. 17601

Phone 393-3906

**No comparison**

John Deere 34 Forage  
Harvester sets the standard  
for low-cost  
silage-makers

It's understandable when you add up the facts that the open-end hay pickup sweeps in windrows that would escape others, that changing attachments is the fastest and easiest around; that there's a cylinder cutterhead and built-in knife sharpener. See why it's the leader. Look one over. See us soon. Credit? You bet.



**Wenger Implement, Inc.**  
The Buck 284-4141



**A. B. C. Groff, Inc.**  
New Holland 354-4191

**Shotzberger's**  
Elm 665-2141

**M. S. Yearsley & Sons**  
West Chester 696-2990

**Landis Bros. Inc.**  
Lancaster 393-3906