

# Weekly Poultry Report

## Eastern Pennsylvania And New Jersey

Prices of light type hens unchanged at farm level despite lower bids from processors in some quarters. Offerings adequate for needs though generally lighter than past several weeks. Limited offerings of heavy hens generally fully adequate for a light demand. Prices paid at farm: Light Type Hens 5 1/2-7 1/2 mostly 7-7 1/2c. Heavy Type Hens Tfewr.

## Fogelsville

(Prices paid dock weights, cents per pound, except where noted)  
HENS, Heavy Type 9-24; PULLETS 21-29 mostly 25-29; ROASTERS 9-31 mostly 20-25; RABBITS 49-66; GUINEAS 120 1/2-1.25 1/2; PIGEONS (Per Pair) 1.00-3.00 mostly 1.00-1.40.  
Total Coops Sold 583.

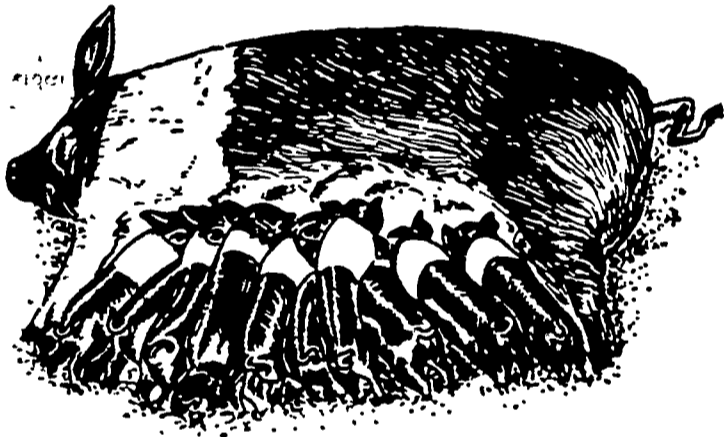
## Federally Inspected Livestock Slaughter

(For week starting May 25, 1970)

	Cattle	Hogs	Sheep
4 days ended, 5/28/70	470,000	1,089,000	151,000
Last week	455,000	1,102,000	149,000
Last year	473,000	1,075,000	166,000

Estimated daily livestock slaughter under Federal Inspection.

## For MORE and STRONGER PIGS at FARROWING

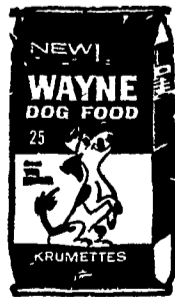


FEED WAYNE BROOD SOW SUPPLEMENT—a specially formulated feed to help sows and gilts farrow big litters of strong, healthy pigs. Carefully blended vitamins, minerals and proteins properly balance farm grains.

Self-feed or hand-feed Wayne Brood Sow Supplement before breeding, during gestation and on through the nursing period.



Sows and gilts fed Brood Sow Supplement at the Wayne Research Farm farrowed an average of 11 pigs per litter . . . average pig birth weight, 3.03 lbs.



HEISEY FARM SERVICE  
Lawn — Ph: 964-3444

GRUBB SUPPLY CO.  
Elizabethtown

WHITE OAK MILL  
R. D. 4, Manheim

HERSHEY BROS.  
Reinholds

DUTCHMAN FEED  
MILLS, INC.  
R. D. 1, Stevens

ROHRER'S MILL  
R. D. 1, Ronks

C. E. SAUDER & SONS  
R. D. 1, East Earl

H. M. STAUFFER  
& SONS, INC.  
Witmer

PARADISE SUPPLY  
Paradise

POWL'S FEED SERVICE  
R. D. 1, Quarryville  
R. D. 2, Peach Bottom

MOUNTVILLE  
FEED SERVICE  
R. D. 2, Columbia

H. JACOB HOOBER  
Intercourse, Pa.

## New York Eggs

Prices lower on large brown, unchanged on balance. Receipts light and consist mainly of large and smaller sizes. Distributive trading generally slow. Inquiry is unsatisfied on jumbos. Extra large are adequate for regular needs with most sales at 35 1/2-37 1/2c, some higher, occasionally short for wholesale inquiry. Large, whites and browns ample, excessive in instance. Mediums are ample with floor stocks reduced by movement to breakers. Carton movement unaggressive and of a no more than fair regular nature. Undertone cautious.

### ● Lancaster (Continued from Page 2)

47 00, few 48 00-50.50; several Choice on Monday 52.00; Good 41 50-44 50, Standard 38 00-43 50, Utility 32.00-39.00.

CALVES RETURNED TO FARM — Large share 90-120 lbs 33 00-46.00, few 49 00-56 00.

HOGS 1250 — Barrows and Gilts 50-1 00 lower.

CLOSING SALES, BARROWS AND GILTS — One lot US 1 200 lbs 26 25 US 1-2 210-230 lbs 25.60-25 85 US 2-3 190-250 lbs 24 10-25 50

SHEEP 250 — Spring Lambs 1 00-2 00 lower, Ewes steady to weak.

SPRING LAMBS — Choice 60 90 lbs 29 00-32 00, few Good 27 50-29 00.

SLAUGHTER EWES — Utility and Good 5 00 8 00.

### ● Vintage (Continued from Page 2)

29 50, Good 27 50 29 00, Standard and Low Good 26 50-27 50

SLAUGHTER HEIFERS—On Wednesday, High Choice and Prime 950-1100 Yield Grade 3 and 4 30 00-30 25, load Prime 1050 lbs 30 50 Choice 850-1050 lbs Yield Grade 2 to 4 29 00-30 00, Mixed Good and Choice 28 00-29 00, Good 26 50-28 00

## Weekly New York Egg Mkt.

(From Monday, May 25th to Friday, May 29th)

	Mon.	Tues.	Wed.	Thurs.	Fri.
<b>WHITE</b>					
Fcy. Ex Large	37	37 1/2	37 1/2	37 1/2	37 1/2
Fcy. Large	33	33 1/2	33 1/2	33 1/2	33 1/2
Fcy. Mediums	26	26 1/2	26 1/2	26 1/2	26 1/2
Fcy. Pullets	18	18 1/2	18 1/2	18 1/2	18 1/2
Peeweese	13	13	13	13	13
<b>BROWN</b>					
Fcy. Large	37	37	36	36	36
Fcy. Mediums	26	26 1/2	26 1/2	26 1/2	26 1/2
Fcy. Pullets	18	18 1/2	18 1/2	18 1/2	18 1/2
Peeweese	13	13	13	13	13
Standards	30	30	30	30	30
Checks	20	20	20	20	20

Tone — Wholesale provisions still a bit irregular. Generally in reasonable balance on Large White

Copyright 1970 by Urner Barry Publications

## Why Brown-White Egg Prices Differ

Ever wonder why brown egg prices often differ so widely from white egg prices on our reports?

We wondered and when the difference got to be five cents a dozen one week, we asked Here's what we found

Brown eggs account for a very small percentage of the total national egg market, probably less than one per cent, according to Jay Irwin, associate Lancaster County agricultural agent.

And in Lancaster County, brown egg production is almost zero, he said

The big market for brown eggs is in the Boston area, few

brown eggs are produced anywhere else

Loim Weigard, president of the Lancaster County Poultry Association, said that the supply of brown eggs, which involves a relatively small number of producers, fluctuates very little and the producers are "zeroed in on their markets"

As a result of the stable production and sound markets, brown egg prices fluctuate much less than do white egg prices

The brown egg prices do fluctuate, however, in response to but generally behind white egg prices, Weigard said

The browns trail behind the whites when prices shoot up, as during last winter, and the browns have trailed behind the whites as the bottom has fallen out of the egg market in the past several weeks

Overall, the browns sell in a narrower range. They don't soar quite as high as whites on good markets and they don't go quite as low in bad markets, Weigard said.

### ● Vintage (Continued from Page 2)

US 1 205-215 lbs 26 25-26 35. US 1-2 205-235 lbs 25.60-26 00. US 2-3 195-240 lbs 25.10-25.50 US 3-4 240-265 lbs 23 75-24 60. 270-285 lbs. 22 25-22 50

SHEEP 105 — Spring Lambs mostly steady

SPRING LAMBS — Choice 40 80 lbs 33 00 37 50, Good 30-00 34 00

WOOLED LAMBS — Couple lots Choice 97-112 lbs 30 00-32 00

# 1970

## FINANCIAL ALMANAC

### INVESTMENT IDEAS

#### 1st MORTGAGES BONDS DEBENTURES LAND

Earn up to 10% and More  
(Depending on your tax Bracket)

### CALL JIM MILLEN

Akron, Pa. 859-2200

if interested

## Help Us Serve You

Don't assume we know about your farm organization's meeting. To get your meeting on our Farm Calendar, it's safer to assume we don't know.

Remind us by calling 394-3047 or 626-2191 or by writing to Lancaster Farming, 22 E. Main St., Lititz, Pa. 17543. You'll be helping us to serve you better.

P.S. — If you're not sure you told us ahead, we don't mind hearing from you again.