

Harrisburg to Start Crop, Livestock Survey

The Pennsylvania Crop Reporting Service begins a two-part survey May 25 to determine number of livestock and the acreage and types of crops being grown on farms in the state. The survey continues through June 6.

Thirty-nine enumerators will make personal visits to farms designated in an aerial survey. At the same time two separate mail surveys will be conducted among farmers not generally included in the personal enumeration. One will seek information about livestock operations the other about crop production.

State Agriculture Secretary Leland H. Bull said the information obtained in the surveys will be beneficial to farmers and businesses serving agriculture.

Enumerators for the Eastern counties are: Mrs. Virginia G. Bush, Cochranville; Wilbur K. Cassel, Fanview Village; Robert M. Clymer, Bethlehem; Frederick Glosser, Bernville; Mrs. Jean H. Kveragas, Friendsville; Carl A. Reber, West Lawn; Ralph E. Shupp, Stroudsburg; Alexander Tercha, Westcosville; and Mrs. Marian R. Yori, Hazleton.

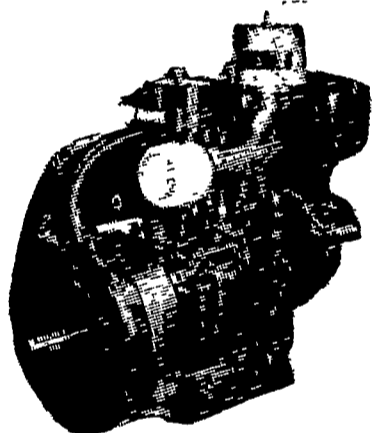
Solanco FFA Officers, Sweetheart



Solanco FFA Chapter's recently elected officers for the coming year are as follows. front row, left to right, Fred Edwards, vice president; Scott Kreider, president; Jackie Wimer, new chapter Sweetheart; Roger

Campbell, vice president. Standing, left to right, Larry Myer, sentinel; Robert Young, parliamentarian; Barry Ulrich, reporter; Carl D. Kreider, treasurer; Adolf Bensinger, photographer, and Rich Aument, secretary.

★ **"Petter Power Pays"** ★
WORLD LEADERS IN DIESEL ENGINE DESIGN



1 1/2 to 45 H.P.
 Continuous Rating

MAKE US PROVE IT!

Over 1,000 Amish farmers already have. They have found that Petter delivers all it promises. Our diesels provide long working life, dependability and good cold starting characteristics.

IT GOES MUCH BETTER POWERED BY PETER

For Prompt and Efficient Service Call
YOUR AUTHORIZED PETER DISTRIBUTOR

GEHMAN BROS.

Gas and Diesel Engines Sales and Service

1 Mile North of Terre Hill on Route 897
 East Earl R. D. 1, Pa. Phone 215 445-6272

WE ARE AS CLOSE AS YOUR TELEPHONE



Sunset Valley Electrical Service

JOHN M. ALLGYER, Prop.

(1/2 mile northwest of Bard's Crossing, on Hunsecker Road, 4 miles east of Lancaster, off Route 23)

Bird-in-Hand, R. 1, Pa. 17505
 Phone: 397-4081

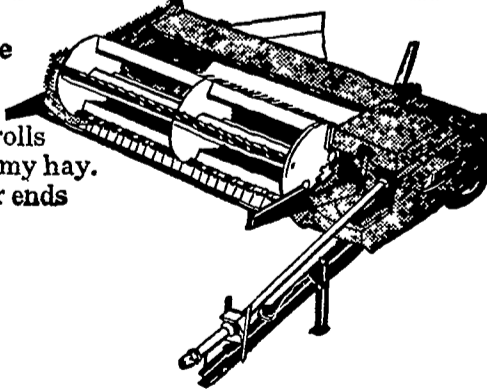
**Pick a gift.
 Any gift.**

Buy a New Idea Mow/ditioner now... choose one of these fine gifts free!

Gifts range from Black & Decker drill kit to 30-cup West Bend percolator—24 gifts in all to choose from. Act now. Offer ends June 30, 1970.



The Mow/ditioner. Finest haying machine anywhere. Gives hay a softer texture, improved palatability, more digestibility. Special non-stop, non-wrap conditioning rolls make leafy hay with tender tips, not stemmy hay. Liberal trades and terms. Special gift offer ends June 30, 1970.



Another CAN DO machine from the CAN DO people.



Kinzer Equip. Co.
 Kinzer

Landis Bros., Inc.
 Lancaster

Roy H. Buch, Inc.
 Ephrata, R.D. #2

A. B. C. Groff, Inc.
 New Holland

Graybill Machines, Inc.
 Litz, R. D. 2

A. L. Herr & Bro.
 Quarryville

Longenecker Farm Supply
 Rheems

Chas. J. McComsey & Sons
 Hickory Hill, Pa.