

by Diane Herr  
News Reporter

The New Holland Community 4-H Club held its monthly meeting at the home of Diane Herr Monday evening, May 18. The meeting was opened by vice president, Mary Lou Fisher. The club members repeated the club pledge and discussed the possibility of having a recreation night. A food and game committee was appointed. For the program, four members gave a skit on the proper use of parliamentary procedure. The meeting was then adjourned.

## Across the Editor's Desk

The American Farm Bureau Federation's official News Letter carried the following report recently:

Pickling cucumber growers members of the Maryland Agricultural Cooperative Marketing Association wound up with an improved contract after a negotiating session with a company which processes pickles in the Harlock area.

The marketing association, an affiliate of the Maryland Farm Bureau reported that price for No 1 graded cucumbers was increased 10 cents over the 1969 price of \$3.70 per hundredweight.

Contract provisions were also changed for the No 2 classification. Under the terms of the contract the diameter for this grade was raised from two inches to two and one eighth inches and "crooked" fruit, un-

less determined as "extreme," would be included in the No 1 grade selling for the higher price.

The negotiations with the processing company followed rejection of the original contract at a meeting of growers on April 20.

### ● Farm Calendar (Continued from Page 1)

- 11:01, Holiday Inn Allentown
- 9:30 a.m. — Lancaster County ASC Committee and agricultural representatives, Farm and Home Center
- 6:15 p.m. — "Sew Smart" Channel 33
- 8:00 p.m. — Lancaster County Agricultural and Home Economics Extension Association, Farm and Home Center

#### Wednesday, May 27

- 7:30 p.m. — Farm Women Societies 24 and 17, Conestoga Church of the Brethren, Bareville

#### Thursday, May 28

- 6:15 p.m. — "Sew Smart" Channel 33
- 7:30 p.m. — Countywide 4-H Holstein Club, Farm and Home Center
- 7:30 p.m. — Farm Women Society 26, home of Mrs. James Buckwalter, Lititz RD3

### Pesticide Label May Be Outdated, Farmers Told

Rapid changes in regulations governing the legal use of pesticides demand that farmers have the latest pesticide information, says John S. McDaniel, University of Delaware agricultural chemicals specialist.

Labels on leftover pesticides do not necessarily contain current recommendations for the product he warns.

Many changes in pesticide regulations have occurred since last season. Responsibility for proper and acceptable use of agricultural chemicals rests with the individual farmer.

Improper use of chemicals may result in unlawful residues. For example, if foreign containing harmful residues is fed to livestock, residue could later show up in milk, meat or butterfat.

To avoid unlawful residue, be sure you have the latest information necessary for proper pesticide use. Make sure you understand the limitations placed on various chemicals and the restrictions on the use of treated crops and crop residue.

Use of pesticides is a touchy business, says McDaniel. Only if you are thoroughly familiar with the chemicals you use can you be sure of a safe harvest next fall.

A Lancaster Farming Classified Ad Can Help

## TRY A CLASSIFIED AD!

# IRRIGATION

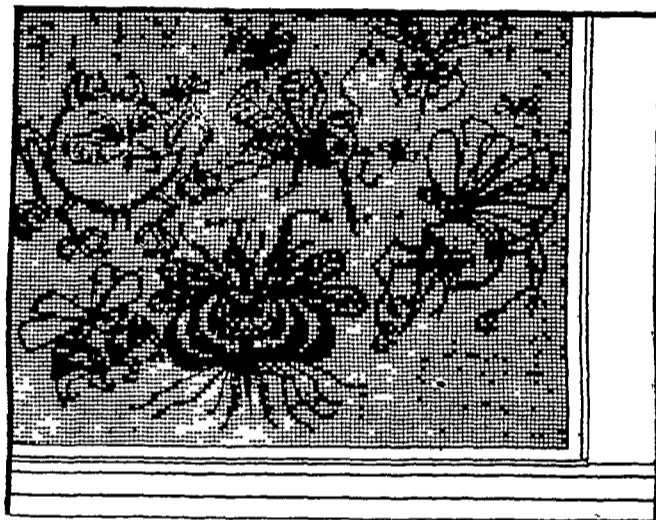
ABOVE OR BELOW SURFACE  
FOR MORE DETAILS  
SALES & SERVICE

## SHENK'S FARM SERVICE

Phone 626-4355



# PRICES REDUCED !!!

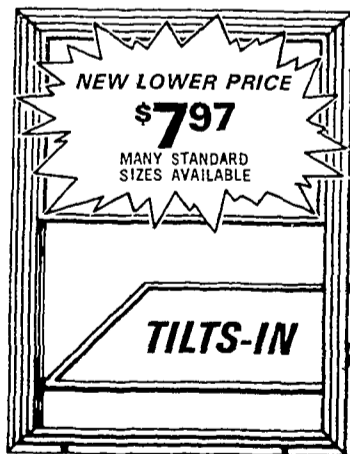


the  
pests are  
coming

ACT NOW! • BUY NOW!  
SAVE NOW!

# GP Markov element control storm windows & doors

your first • Screens out the bugs  
summer • Ventilates with cool fresh air  
necessity • A year 'round unit

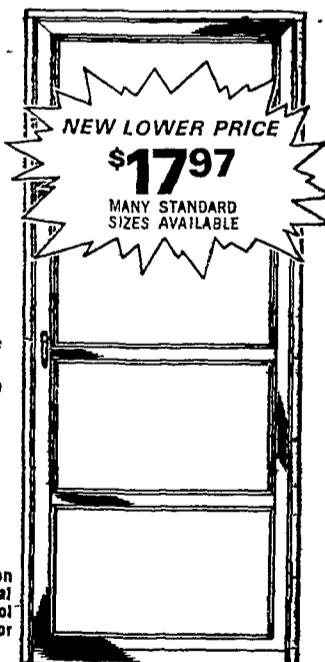


Triple Track Element Control Storm Window (Mill Bright Finish)

DON'T DELAY!

Put up your new storms, with screens now not in blustery winter!

Stop in for your FREE brochure on HOW TO MEASURE for your Element Control Storm Windows & Doors



HighLite Combination 1" Pre-hung Natural Finish Element Control Storm Door

© 1970 Weather-Seal

GP GEORGIA-PACIFIC / WEATHER-SEAL DIVISION

Haul Your Own And Save . . . . Delivery Available.

3 Miles East  
on Route 340  
(2275 Old Philadelphia Pike)  
LANCASTER, PA.



OPEN 7:30 to 5:30  
SIX DAYS A WEEK

Phone: 397-4829  
Phone: 397-4820