

# Hardin Says Food Is Good Buy

(Continued from Page 19)

group that the Food Stamp Program is scheduled to be introduced in New York City, tentatively early in September.

"This will be the largest food stamp program in the Nation," he said, "and one we will watch with keen interest. The Department is working with keen interest. The Department is working with State and local officials to complete operating arrangements."

He suggested that Association members from the New York area find out from city officials what they might do to help get the program started.

He cited the "tremendous amount" of information work necessary to make sure all those eligible are aware of the program, understand it, know how to enroll, and then do it.

"May 6 is the first anniversary of President Nixon's message on Hunger to the Congress, a call for ending poverty-caused hunger in the United States for all time," the Secretary said. "The gains have been very dramatic in this one year but there is much to be done, and it will take the best from private citizens as well as government to finish the job."

He said the revised program's potential for helping the needy in large cities is indicated by recent experience in Chicago,

which has just begun its fifth year of operation.

Secretary Hardin pointed out that the new schedule of payment and bonuses was put into effect in Cook County (Chicago) at the beginning of March. During that first month of operation, 206,000 people took part in the Food Stamp program. That was a 65 percent increase (81,000 added persons) over the number taking part in February.

"The results are even more

meaningful— even more dramatic— when you look at them from the standpoint of the pool and appreciate the substantial amount of extra food buying power that has been given to them. The bonus payments in extra food coupons paid in Chicago totaled over \$19 million for the month of March— compared to \$647,000 for the previous month.

"The improvements in the Food Stamp Program, therefore, actually tripled the

amount of bonus paid to the power into their hands, as they had had under the previous payment schedule."

## Doctors Find Diet-Heart Disease Relationship Still Not Proven

"Most egg producers get steamed up about cholesterol only when they read an adverse report or when a friend is placed on an egg-restricted diet. Perhaps they should read the Diet-Heart Review Panel report published by the American Heart Association," advises Dr. L. A. Wilhelm, PENB president.

The panel, headed by Dr. Edward H. Ahrens, Jr., of Rockefeller University, is made up of 34 prominent MD's, PhD's and other recognized experts in the field of diet and heart disease.

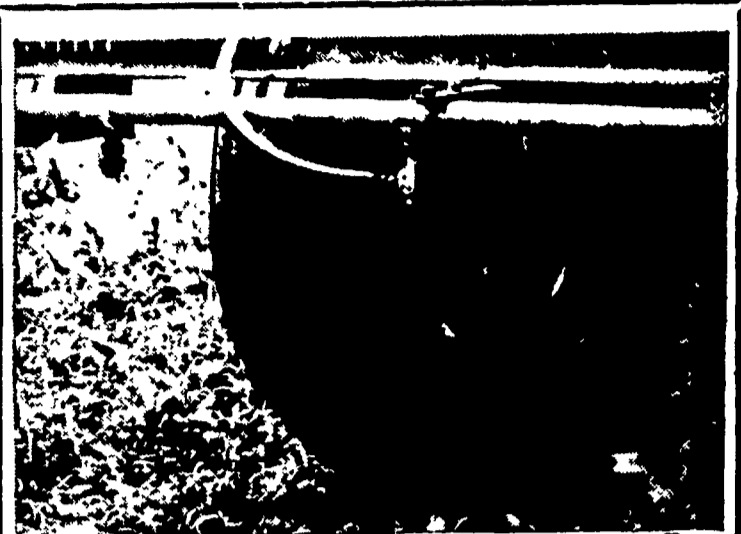
After inspecting "all available evidence" on the proposition that the incidence of coronary heart disease might be reduced through dietary measures, the

Panel found "this evidence most suggestive but not convincing."

The panel also notes that in connection with various reports addressed to the question of whether a diet rich in cholesterol and saturated fats may be inductive to heart disease... "various national organizations have felt compelled to issue what is regarded as prudent dietary advice about fats and cholesterol to the public, and similar product advice may already have become a part of the current medical practice in relation to arteriosclerosis and heart attacks.

Nevertheless, it is the Panel's opinion that the important points at issue remain unproven. It is not proven that dietary modification can prevent arteriosclerotic heart disease in man."

"The egg man who really tries to understand the problem of cholesterol-heart-physician might be well advised to procure a copy of American Heart Association monograph #28. Send \$4.00 to 44 E. 23rd St., New York, New York 10010," concluded Dr. Wilhelm.



## Is it too late for good weed control in corn? Not yet.

You can still apply the No. 1 weed killer, AAtrex® herbicide. It gets almost all the grass and broadleaf weeds in corn— if you spray before they're 1 1/2' high.

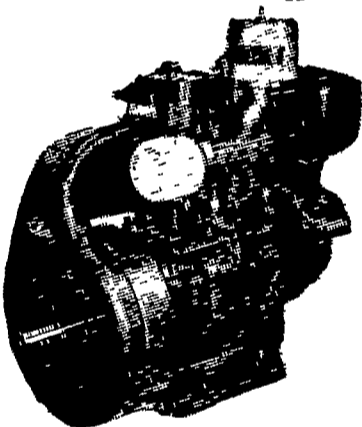
So, don't give in to a weedy corn field. There's still time to spray AAtrex. We'll give you all the information you need on this post-emergence application of the herbicide that is safe to your corn.

**P. L. ROHRER & BRO., INC.**

SMOKETOWN

Phone Lanc. 397-3539

## ★ "Petter Power Pays" ★ WORLD LEADERS IN DIESEL ENGINE DESIGN



1 1/2 to 45 H.P.  
Continuous Rating

## MAKE US PROVE IT!

Over 1,000 Amish farmers already have. They have found that Petter delivers all it promises. Our diesels provide long working life, dependability and good cold starting characteristics.

IT GOES  
MUCH BETTER  
POWERED  
BY PETTER

For Prompt and Efficient Service Call  
YOUR AUTHORIZED PETTER DISTRIBUTOR

## GEHMAN BROS.

Gas and Diesel Engines Sales and Service

1 Mile North of Terre Hill on Route 897  
East Earl, R. D. 1, Pa. Phone 215 445-6272

WE ARE AS CLOSE AS YOUR TELEPHONE



## Sunset Valley Electrical Service

JOHN M. ALLGYER, Prop.

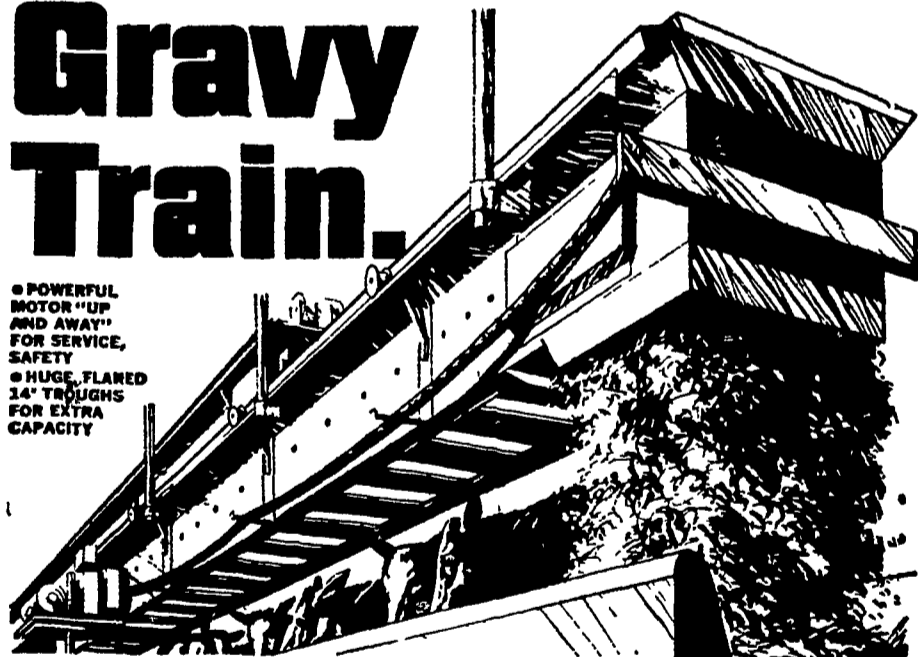
(1/2 mile northwest of Bard's Crossing, on Hunsecker Road, 4 miles east of Lancaster, off Route 23)

Bird-in-Hand, R. 1, Pa. 17505

Phone: 397-4081

## Gravy Train.

• POWERFUL MOTOR "UP AND AWAY" FOR SERVICE, SAFETY  
• HUGE, FLARED 14" TROUGH FOR EXTRA CAPACITY



Strength, Performance, Dependability. You've got 'em all with VAN DALE'S NEW TRAVELING BUNK FEEDER.

Van Dale's SCF-1400 is the traveling feeder to put you on the track to faster, more profitable operations. Automatically, it delivers up to 40 tons of silage per hour to bunks on a single chain, continuous "shuttle" service.

Feeder trough chain is No. 67 pin-tie (12,500 lb. strength) and drive chain is C-550 steel (average top strength of 10,000 lbs.). Interlocking, snap-together galvanized metal components reduce erection time as much as 50%. Suspended or floor-mounted, rails are mounted with Van Dale's exclusive clip-on brackets to provide extra-rigid support. Unit adapts to any feeding need in-barn or out-of-doors.

## CALEB M. WENGER

R. D. 1,  
Drumore Center  
Quarryville, Pa.  
Phone 548-2116

**VAN DALE**