



Dale Weiler (left) and Gerald Weaver, Grassland FFA members who won the area small gasoline engine contest this week.

Grassland FFA Wins Area Engine Contest

Grassland FFA Chapter of New Holland won the area small gasoline engine contest at Garden Spot High School, New Holland Wednesday afternoon.

Other chapters from the Lancaster, York and Chester County area in the contest were Solanco, Lancaster County, which placed second with 319 points, Cloister of Ephrata, Lancaster County, third with 300 points, Manheim Central of Lancaster County; Red Lion of York County, and Dover of York County.

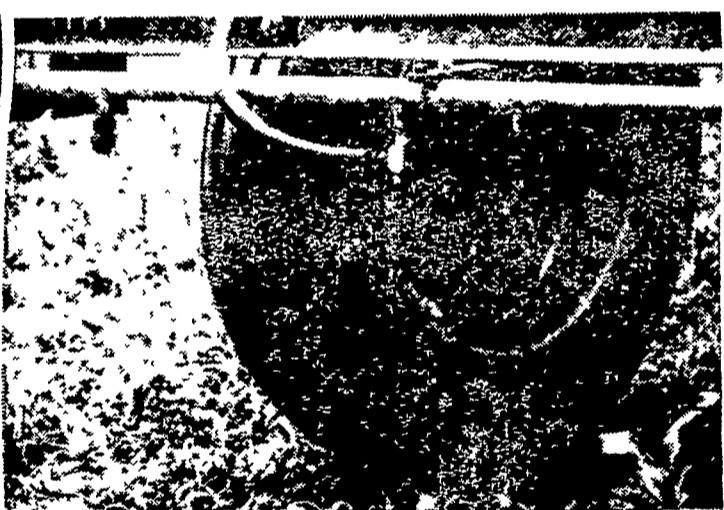
Grassland, which scored 373 points in the contest, will repre-

sent the area in the state contest later this year.

The members of Grassland's winning team were Dale Weiler, Elverson RD2, and Gerald Weaver, Box 84, Blue Ball, according to the Grassland reporter, Nelson Martin.

Henry Givler, area FFA supervisor, noted the contest includes a written test on the small gasoline engine, including care, safety and operation, identification of motor parts, a test on use of the operator's manual, and identification and correction of problems of a motor with-

in an allotted 25 minutes



Is it too late for good weed control in corn? Not yet.

You can still apply the No. 1 weed killer, AAtrex® herbicide. It gets almost all the grass and broadleaf weeds in corn — if you spray before they're 1 1/2' high.

So, don't give in to a weedy corn field. There's still time to spray AAtrex. We'll give you all the information you need on this post-emergence application of the herbicide that is safe to your corn.

Your Local AGRICO Dealer

Or Stop At . . .

Lancaster Agrico Service Center
1661 Rohierstown Road

Churchtown Agrico Service Center
Route 23

Quarryville Agrico Service Center
North Church Street



AGRICO PESTICIDES HELP YOU STAY ON THE CRITICAL PATH TO BETTER YIELDS

AGWAY

WHERE GROWING THINGS IS OUR BUSINESS



SNAROL PELLETS

Contains Metaldehyde for use in controlling slugs, snails, cutworms in vegetable gardens and tobacco beds.

1 lb. box \$.69

5 lb. box \$2.29



VEGETABLE GARDEN DUST

Dust containing Captan, Sevin or Methoxychlor, and Malathion. Will effectively control most vegetable insects and diseases in the home garden. Apply every 7-10 days. Most useful in controlling aphids.

1 lb. can \$ 1.29

4 lb. can \$ 2.95

25 lb. can \$14.75



5% SEVIN DUST

For ornamentals, vegetables, fruit, turf, to control a large number of insects. It's relative safety and permissible close use to harvests makes it a favored insecticide. Not especially effective against aphids.

4 lb. can \$2.19



1% ROTENONE DUST

Safe to use on flowers, shrubs and vegetables for control of a wide range of insects. Can safely be used right up until harvest time. Rotenone is harmless to humans and pets. Used to control fleas and ticks on dogs. 1 lb. dust will treat approximately 400 feet of row.

1 lb. can \$.85

4 lb. can \$2.19



BORDEAUX MIXTURE

Potatoes, tomatoes and celery for blight control. Apples for bitter and black rot. Peach leaf curl. Strawberry leaf curl. Gray mold in lilies, Peonies, Dogwood blight, etc.

1 lb. 98c



4% MALATHION DUST

Controls wide range of insects on flowers, fruits, ornamentals, vegetables, and pets. Especially effective against aphids. 1 lb. dust will treat approximately 400 feet of row.

4 lb. can \$2.39



WETTABLE SULFUR

95% Sulfur which can be sprayed or dusted for prevention of diseases on fruits, flowers, evergreens. Spray 4 tbsps per gallon of water.

5 lb. can \$2.59



SPRAYER

No. 140 3 1/2 gal. capacity, 20" extension. Heavy duty use. Funnel top compressed air sprayers fill many needs. Two-stage safety locks prevent pumps from blowing out if released under pressure. Units are electrically welded for greatest strength. Pumps, adjustable nozzles and 3/8 inch extension tubes are brass. Hose, gaskets and valves are oil resistant rubber.

Price \$13.80



FRUIT SPRAY

Recommended for controlling many common diseases and insect pests of home gardens, fruit plantings, flower gardens and ornamental shrubs.

1 lb. can \$ 1.98

4 lb. can \$ 4.95

25 lb. can \$28.95



LANCASTER 394-0541

Manheim Pike and Dillerville Road