

# Is Whey a Pollutant Or a Usable Product?

Only about a third of the 22 billion pounds of fluid whey produced annually by American cheese manufacturers is utilized.

Must the remaining 15 billion pounds of whey be subjected to costly treatment for safe disposal into streams in accordance with Federal pollution policy, or can it possibly be converted

to profitable byproducts of the dairy industry?

The U.S. Department of Agriculture and the University of Maryland Department of Dairy Science are trying to answer this question. They have planned a two day conference, to be held June 2 and 3 at the University's Adult Education Center and USDA's Dairy Products Laboratory, to discuss the possible uses of whey.

The first day's discussion will be devoted to Federal pollution policies as they relate to whey and a review of current knowledge of whey utilization. Today industrial processing as well as new methods of processing will be outlined.

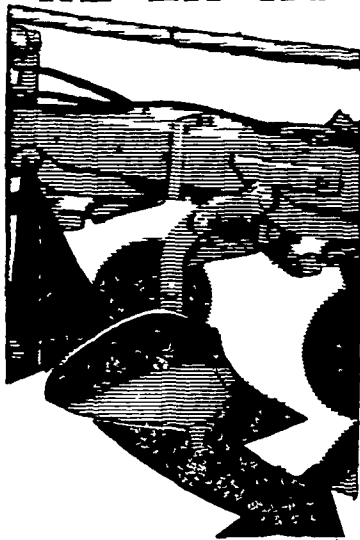
The morning session of the second day will include discussion on the uses of whey, its nutritional value, chemical problems in its utilization, and the extent to which it can be used in

foods and feeds. This session will conclude with a panel discussion summarizing the findings of the conference and considering some of the problems of small and large processors, says Dr. R. F. Davis, head of the Dairy Science Department.

On the afternoon of the second day, the conference will assemble at the Dairy Products Laboratory at the Agricultural Research Center in Beltsville for demonstrations of new methods for processing whey.

The conference will be open to all interested persons. Advance registration forms will be sent to industry representatives upon request. Inquiries should be addressed to Dr. Byron H. Webb, Chief, Dairy Products Laboratory, Eastern Utilization Research and Development Division, Agricultural Research Service, USDA, Washington, D.C. 20250

## FAST RE-ENTRY



YOU'LL leave little or no ground unplowed in rock-infested fields when you use an Allis-Chalmers Monoframe plow with optional hydraulic reset. That's because the bottoms trip only far enough to clear the obstruction, then immediately re-enter the ground. Exit and re-entry are on the same plane, and share points never dip below furrow level. What's more, the hydraulic reset system is completely self-contained, with an accumulator right on the plow. You don't depend on your tractor's hydraulic system for beam resetting. If you've got a rocky problem, come in and see us. We'll show you why Going Orange is Going Great.



**Roy H. Buch, Inc.**  
Ephrata, R.D. 2

**L. H. Brubaker**  
Lititz, Pa.

**Grumelli Farm Service**  
Quarryville, Pa.

**Nissley Farm Service**  
Washington Boro, Pa.

**N. G. Myers & Son**  
Rheems, Pa.

**L. H. Brubaker**  
Lancaster, Pa.

**Allen H. Matz Farm Equipment**  
New Holland



Try A Classified Ad It Pays!

**PLANT FOOD STORE**

**IT IS HERE**

"Look For This Sign"

**THE NEW ONE  
SUPER  
SUCKER STUFF**

For Sucker Control  
With The "Quicker-Sticker"  
For Use In Lancaster County Tobacco.

Contact Us For Prices

● Serving The Farmer  
Phone (717) 768-8451

● Gardener & Home Owner  
Intercourse, Penna. 17543

# NOW HIRING

**EARN MORE THAN AVERAGE  
PLUS EXCELLENT BENEFITS**

**WE NEED PRODUCTION HELP  
IN ALL DEPARTMENTS**

**PIECE WORK MOLDING — EARNINGS \$4.15 Per Hour**  
**PIECE WORK HANDLING — EARNINGS \$3.50 Per Hour**  
**PIECE WORK GRINDING — EARNINGS \$3.50 Per Hour**  
**CORE SHOP**

**WE WILL TRAIN YOU**

Interviewing Daily — Landisville Plant, Route 230 By-Pass  
or 712 South Prince St., Lancaster.

**APPLY IN PERSON**

**MONDAY THRU FRIDAY 8 A.M. TO 5 P.M.**  
**SATURDAY — 8 A.M. TO 12 NOON**

**PENNSYLVANIA MALLEABLE  
IRON DIVISION**

Route 230 By-Pass

Landisville, Pa.

"AN EQUAL OPPORTUNITY EMPLOYER"