

Clogged Sewer Lines

Sewer lines are frequently damaged by tree roots. A chemical treatment method is currently being developed by agricultural botanists at the University of California, Davis campus.

The method is under test by public works officials of Sacramento County in cooperation with the scientists. Herbicides are injected into clogged pipelines and apparently has a distinct advantage over other chemical or mechanical trimming treatments.

Roots that enter joints or cracks in the pipeline are killed back for a short distance into the soil outside the pipe. This prevents their continued growth and expansion within tile joints and cracks.

The herbicides under trial are dichlobenil and metham. At this point in the research, neither material is considered to pose any residue or pollution problems in the system.

The chemicals do not appear to pose any general threat to trees, since the root dieback outside the lines usually is limited to three inches or less. Research is continuing to determine the immediate and long-term effects of the chemicals on trees.

• Milk Dealers

(Continued from Page 29)

tion business to operating cooperatives," according to Love.

He continued, "It is no laughing matter when a company the size and importance of Borden's simply walked away from its milk and ice cream division in New York City.

"Therefore, it is our judgment that the preservation of milk companies is essential for maximum prices to producers of milk as well as for market stability.

"As a consequence, Eastern will be engaged in performing the check writing and quality control work for many of our producer members whose milk is sold to certain handlers. This, no doubt, will give the Association added marketing strength among its members — something that many of our members have been urging upon the Association," Love said.

He noted that proprietary milk companies, although more efficient, have not had the same luxury, as have operating coops, of deducting moneys from their membership to cover losses experienced in distribution of milk.

Eastern will continue its policy of obtaining a maximum return to its membership with minimum dues for services performed. Because of its present actions, Eastern will assure its united membership continuous and stable markets, he said.

• Annual Atlantic

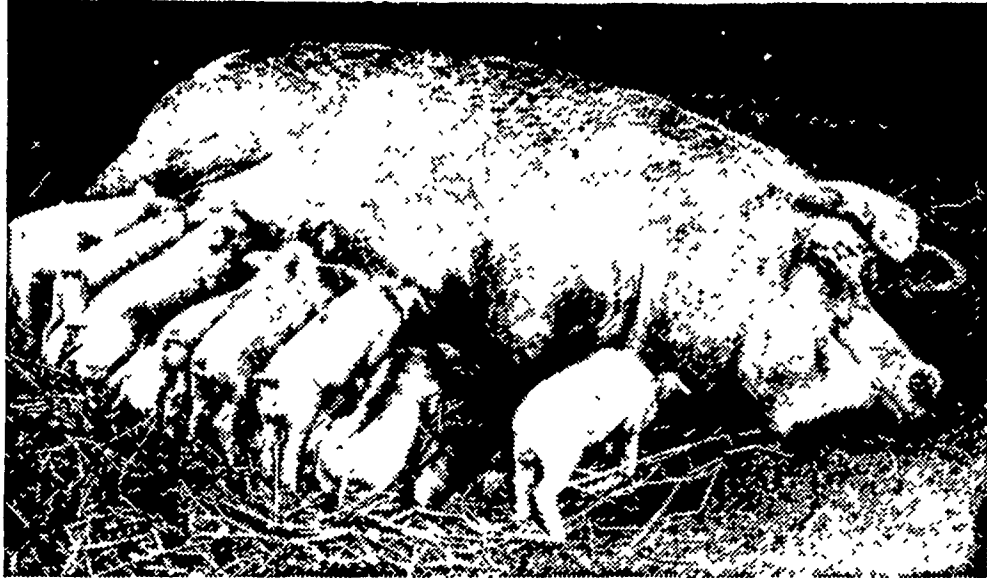
(Continued from Page 29)

amendment to make Atlantic's by-laws conform to the New Cooperative Act of 1968 and revised Internal Revenue Service regulations, and to increase the per diem payment for Director's services from \$20 to \$30.

Featured on the afternoon program will be a slide illustrated report on "Our South American Markets" by Roger Emig, Atlantic Director of Service & Sales.

Site Committeemen who have served during the past year will meet with newly elected breed representatives in discussion sessions March 17 and 18. Development of the NAL Affiliated Breeders program will be given special attention at these site conferences.

READY FOR BALANCED FEED



JUST THE FEED FOR US PIGLET TO GROW ON!

NO. 701 GREEN PASTURES PIG STARTER PELLETS!

How To Use:—

Start Creep feeding No. 701 when pigs weigh 5 lbs. or are 7 days old and feed through 6th week when pigs should weigh about 35 lbs.

Amount Required

15 to 20 lbs. per pig.

Feed Per Lbs. Of Gain During This Period

1.25 to 1.50 lbs.

Field Tests Indicate:—

1. More uniformity in pigs, fewer runts.
2. More economical gains. Heavier pigs at 8 weeks.
3. Pigs may be weaned at six weeks. This gives more time for proper conditioning of sow before re-breeding.
4. Easier to maintain farrowing schedule.

MOST PALATABLE FEED WE HAVE "Sweet as a good muffin"

If we can help you design a profitable program for your swine enterprise or aid you in problems relating to swine management or nutrition see your MILLER & BUSHONG SERVICE Representative or call us direct at Lancaster 392-2145.



MILLER & BUSHONG, Inc.

ROHRERSTOWN, PA.

Phone 392-2145

"Finest Service Anywhere"