

Farmers' Association Group Visits Congressman Eshleman

Four farmers from Lancaster County Farmers' Association were among more than 150 farmers to attend the annual legislative tour of the Pennsylvania Farmers' Association this week in Washington, D.C.

The four visited with Congressman Edwin Eshleman and Senator Hugh Scott.

The four were James Garber, Mount Joy RD2; Jay Newcomer, Mount Joy RD1; John Groff, Quarryville RD1, and Ivan R. Yost, Christiana RD1.

A banquet was held Tuesday evening for the legislators at the Hotel Sonesta with 18 legislators and Senators Scott and Richard Schweiker in attendance. Both legislators spoke to the farm delegation.

"We need a new approach to federal farm programs," President John R. Pitzer told the national legislators at the banquet. "Our members are being hurt by the present Food and Agriculture Act of 1965," he said, pointing out "the inequities of the program and its failure to help raise farm income."

"Nationally farmers received an average of more than 20 percent of their total income from government subsidy programs, while in Penna. less than seven

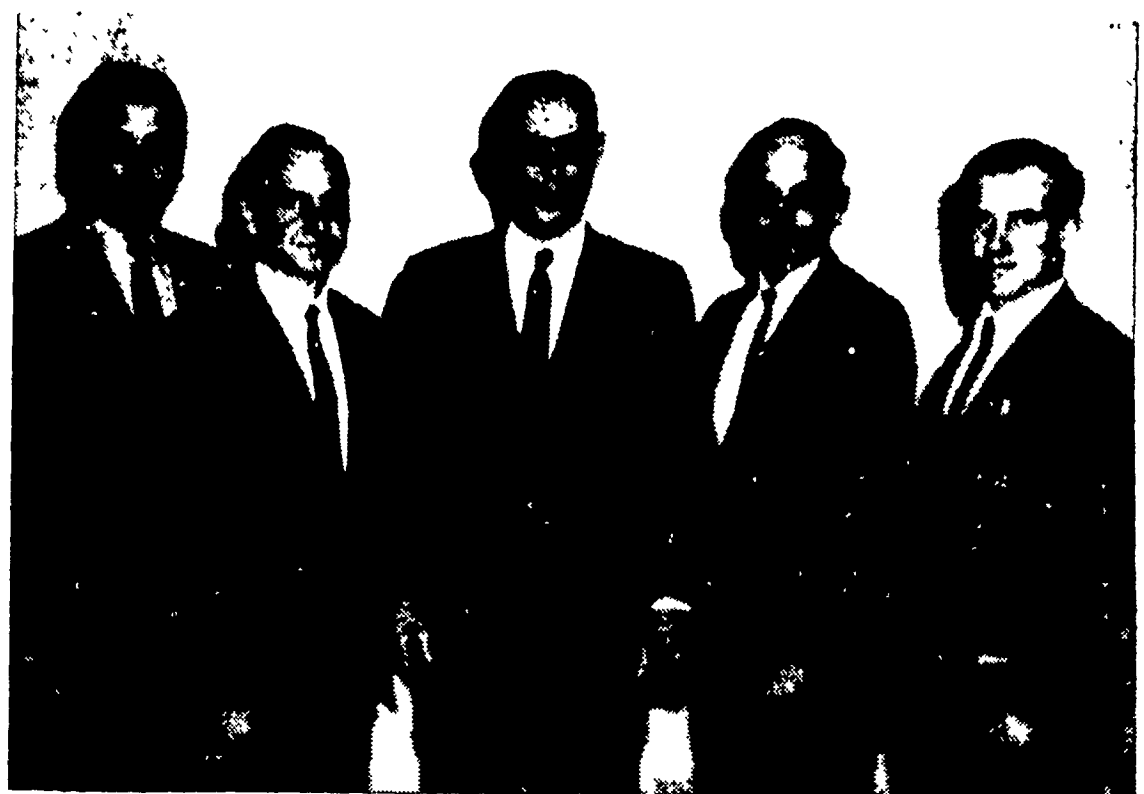
percent of the farmers' income is derived from this source. The number of farmers is declining annually and farm income is lagging drastically in comparison with other segments of the economy."

The Pennsylvania Farmers' Association is a general farm organization with 11,549 farm family members, and it has 47 local affiliates encompassing 51 Keystone counties.

"Pennsylvania agriculture, along with other northeastern states, has a unique problem it is a grain deficient state," Pitzer said. "A large amount of our grain supply must be shipped into the state for feed and manufacturing of food stuffs."

"Many agribusiness firms will be seriously damaged if present trends continue. The \$75 million to \$80 million retail industry located in Pennsylvania could be lost, because production acreage devoted to wheat has dropped more than 50 per cent since 1950 from 863 thousand acres to 394 thousand acres. Officials of the pretzel industry fear a shortage of Pennsylvania wheat, a necessity for pretzel flour."

The legislation supported by the PFA would direct the Secretary of Agriculture to retire at least 10 million acres from pro-



Four Lancaster County Farmers' Association members to visit Congressman Edwin D. Eshleman in Washington D. C. are, from left: Ivan Yost, Christiana RD1;

Jay Newcomer, Mount Joy RD1; Congressman Eshleman; James Garber, Mount Joy RD2, and John Groff, Quarryville RD1.

duction each year in 1971 through 1975, or at least 50 million acres from production by the end of the five year period.

It also calls for a phase out over the same period of acreage

controls, base acreages, marketing quotas, processing taxes, and direct payments for wheat, feed grains and cotton. By 1975 there would not be any payments, or

controls of these commodities

Nissley To Head Baby Beef Club

Malvin Nissley of Mount Joy was elected president of the Red Rose Baby Beef and Lamb Club at the annual reorganization meeting this week at the Farm and Home Center.

The Club, which has 125 members, will meet at 8 p.m. the first Wednesday of each month for the remainder of the year. The members now have steers on feed for the 1971 State Fair Show, Max Smith, county agent, explained.

Other officers elected to a one-year term were

Donna Hess, Strasburg, vice president, Karen High, Leola, secretary, Sheryl Weaver, New Holland, assistant secretary, Burnell Buchen, Manheim, treasurer, and Ray Bibbaker, Lancaster, assistant secretary.

Others elected are Sharon Kleider, Manheim, and Gay Dean, Strasburg, song leaders; Debra Buchen, Manheim, and Ed Hess, Strasburg, game leaders; and Ann Nissley, Mount Joy, and Roland Longenecker, Lititz, news reporters.

Try A Classified Ad

WIRE FIELD FENCING

TOBACCO MUSLIN

Tobacco Seed

Moth Balls in bulk for insect control

Caustic Soda in bulk for soap making

W. L. Zimmerman and Sons

Dial 717-763-3131
INTERCOURSE, PENNA.



FEED YOUR COWS the best you know how!

Red Rose Dairy Feeds . . . and Red Rose Supplements . . . are the feeds you need! They provide all the nutrients cows need for maintenance — and put more milk in the pail.

Take Red Rose 14 Test-Cow Feed, for example. This course-textured all purpose feed can be fed to your milking cows, dry cows, calves and bulls. You can feed it all seasons but it's especially helpful to keep appetites from lagging during warm weather.

Other Red Rose Dairy Feeds are available in many protein levels. Select the one that suits your particular need — and feed with a satisfaction you have never known before!

THESE DEALERS CAN SERVE YOU WITH YOUR NEEDS

Walter Binkley & Son
Lititz

Brown & Rea, Inc.
Atglen

Elverson Supply Co.
Elverson

Henry E. Garber
R. D. 1, Elizabethtown, Pa.

L. T. Geib Estate
Manheim

I. B. Graybill & Son
Strasburg

E. Musser Heisey & Son
R. D. #2, Mt. Joy, Pa.

Heistand Bros.
Elizabethtown

Red Rose Farm Service, Inc.
N. Church St., Quarryville

David B. Hurst
Bowmansville

G. R. Mitchell, Inc.
Refton, Pa.

Mountville Feed Service
Mountville

Musser Farms, Inc.
Columbia

Musser's Mill
The Buck

Chas. E. Sauder & Sons
Terre Hill

Ammon E. Shelly
Lititz

E. P. Spotts, Inc.
Honey Brook

H. M. Stauffer & Sons, Inc.
Witmer