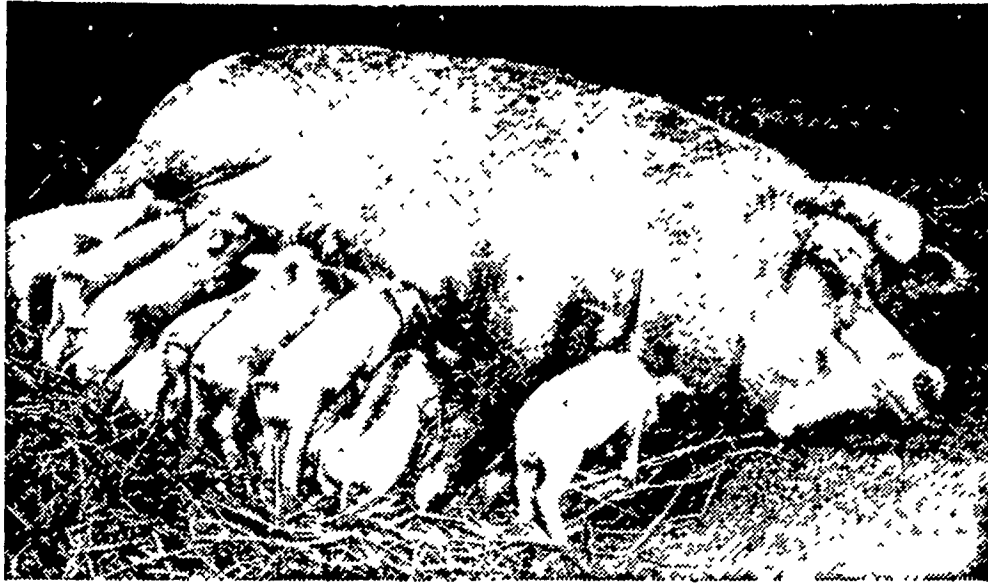


**READY FOR
BALANCED FEED**



**JUST THE FEED FOR US
PIGLETS TO GROW ON!**

**NO. 701 GREEN PASTURES
PIG STARTER PELLETS!**

How To Use:—

Start Creep feeding No. 701 when pigs weigh 5 lbs. or are 7 days old and feed through 6th week when pigs should weigh about 35 lbs.

Amount Required

15 to 20 lbs. per pig.

**Feed Per Lbs. Of Gain During
This Period**

1.25 to 1.50 lbs.

Field Tests Indicate:—

1. More uniformity in pigs, fewer runts.
2. More economical gains. Heavier pigs at 8 weeks.
3. Pigs may be weaned at six weeks. This give more time for proper conditioning of sow before re-breeding.
4. Easier to maintain farrowing schedule.

MOST PALATABLE FEED WE HAVE

"Sweet as a good muffin"

If we can help you design a profitable program for your swine enterprise or aid you in problems relating to swine management or nutrition see your MILLER & BUSHONG SERVICE Representative or call us direct at Lancaster 392-2145.



**MILLER &
BUSHONG, Inc.**

ROHRERSTOWN, PA.

Phone 392-2145

"Finest Service Anywhere"

BEEES

In many areas bees have not had a flight since late November, and some of them have been covered with snow. Late part of the time this is usually not a problem so long as they can get a little. Bees, generally, are in good condition and have used a normal amount of food.

In most cases the lower entrance to the hives is closed with snow, making the upper entrance very important for both ventilation and flight hole.

One of the biggest problems in winter, adequate ventilation, is helped by an upper entrance. If the hives do not have an upper entrance, there is still time to supply one by drilling a "3/8" auger hole in the second story. This should be done on a relatively warm day.

FOOD

Bees which went into winter short of food may be saved by adding granulated sugar on the inner cover. Not all bees utilize dry sugar efficiently, but if there is moisture available (and there usually is) most bees will survive on such food.

Once the outside temperature starts to moderate, sugar syrup (1 1/2 or 2 parts sugar to 1 part water by volume) may be fed. The sugar syrup should be fed slowly since it should be used to rear brood rather than to store as surplus.

There has been some interest in feeding pollen in the spring. Pollen substitutes have not been recommended in the past, but there is evidence to show that feeding one per cent pollen by weight with the sugar will help stimulate brood rearing.

Pollen may be collected during the summer and fed back the following spring. It can be preserved by either freezing or drying. To mix with sugar syrup, first soak in water then add to the syrup.

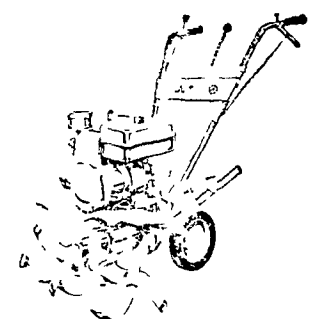
**National FFA Honors
New Holland Division**

New Holland Division, Sperry Rand Corp. has been honored by the National FFA for 75 years of service to agriculture.

Harry W. Birdwell, FFA national president, presented a plaque recently to George C. Delp, Sperry Rand vice president.

Birdwell, of Oklahoma, and five other FFA national officers visited the plant and spent a day in a question and answer session with company officers.

Ariens
tiller



**POSEY'S
Garden Center**

Rear 49 N Broad St., Lititz

626-2343