

Manheim Corn Grower Gets Best State Yield

Clarence A. Keener Jr., Manheim farmer, had the best yield among Pennsylvanians entering the Corn Growers Assn 1969 national non-irrigated corn yield contest. Keener had a yield of 156.2 bushels per acre on his 25.68 acre field.

Taking third in the Pennsylvania portion of the contest was Clyde K. Eshelman and Sons, of Washington Boro, with a yield of 143.37 bushels per acre on a 28-acre field.

A Wisconsin farmer, William Gretzinger, Fall River, Wis., won first place nationally with a yield of 238.42 bushels per acre.

Keener's field was spring plowed and planted May 1 at the rate of 22,500 seeds per acre in 34-inch rows. He applied a heavy portion of livestock manure and triple super phosphate, which was plowed down. Two hundred pounds of starter fertilizer was used, and on May 1, 150 pounds actual nitrogen was applied.

One pound per acre of actual Chlordane was used and two pounds of atrazine was applied 10 days after planting.

Need . . .

HAY - STRAW - EAR CORN

Buy Now and Save!

More and more farmers are buying from us for better value and all around satisfaction

Delivered — any quantity

Phone Area Code 717 687-7631

Esbenshade Turkey Farm

"America's Oldest"
PARADISE, PA.

Burkholder Proposes Bold Egg Marketing

A bold marketing approach that will reflect a good image on producers was urged recently by Ben Burkholder of New Holland, a director of the Pennsylvania Egg Marketing Assn.

Speaking at the association's February meeting, Burkholder said producers must become more bold in their marketing efforts.

"We must carefully direct our marketing procedures and educate our producers."

"We must mind our business in our area in a real good manner and our look at the whole marketing situation must be new."

"We are obligated to reflect a good image to our producers and exercise good practices to our buyers."

There appeared to be a strong feeling in the group that somebody somehow should start and carry through on an investigation of the present egg pricing system.

Members said they are concerned about multiple pricing on egg sales to the same and different receivers. Under the circumstances the F.T.C. should be alerted, because according to their regulations such pricing is not permitted.

A motion was made and passed that the PEMA members support action on House Bill 1564, which has passed the House and has reached the third reading in the Senate. Members were urged to contact their Senators and encourage them to complete the passage of the bill for the protection of Pennsylvania producers, marketers, and consumers.

The matter of a uniform carton to be used by members of the PEMA was brought to the attention of the group again and one carton company presented their proposal of a design for such a carton.

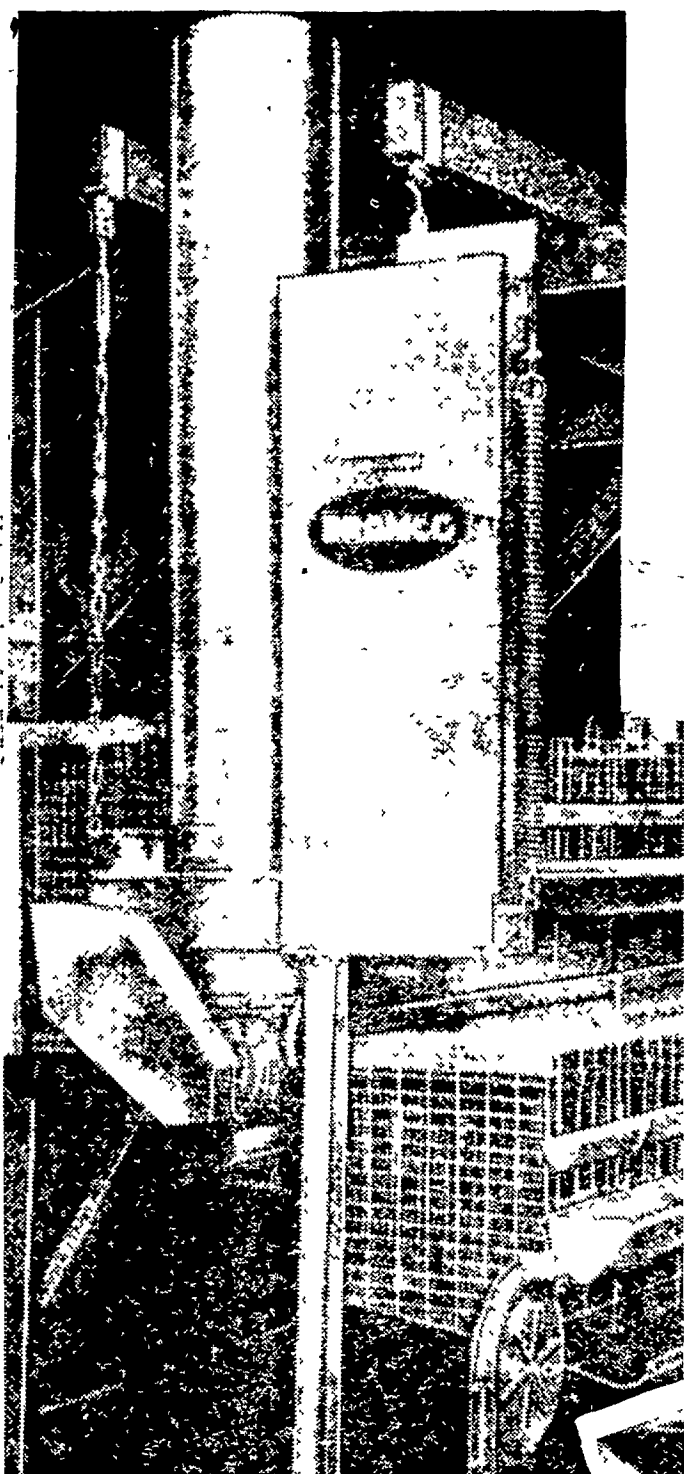
It was decided that other manufacturers would be given an opportunity to propose a design and that the proposals would be presented to an appointed committee, which in turn would choose a design to present to the entire membership.

The membership agreed to support research proposed by the Penn State University that would assist in developing means of improving egg quality. The project has been presented to the Research Committee for Farm Funds to support the research.

Keith Birch presented a slide review of the Fair Show exhibits, and activities, then gave a preliminary review of the Shell Damage classification that has been developed to pinpoint areas of damage.

Eggs Economical

Eggs are nutritious and economical to serve the family, says Miss Ruth J. Buck, extension foods and nutrition specialist, The Pennsylvania State University, because they contain protein and the mineral iron which is an essential part of the red blood cells. Eggs also are practical for weightwatchers, since a large egg served without butter or oily-type dressings has only 80 calories.



BRAMCO®

Exclusive!

THE MOST EFFICIENT AUTOMATIC CAGE FEEDER SYSTEM IN THE INDUSTRY.

BRAMCO LINK-CAGE FEEDER

The Bramco-Oakes Automatic Cage Feeding System, using the exclusive linkage and trough liner pictured below, has long been recognized as the ultimate in automatic cage feeding. The feed does not move in the trough. It travels through the trough liner, providing each bird with a complete fully balanced ration. This is just one of the features of this Bramco-Oakes Cage Feeding System that will boost production.



WE SELL, SERVICE AND INSTALL

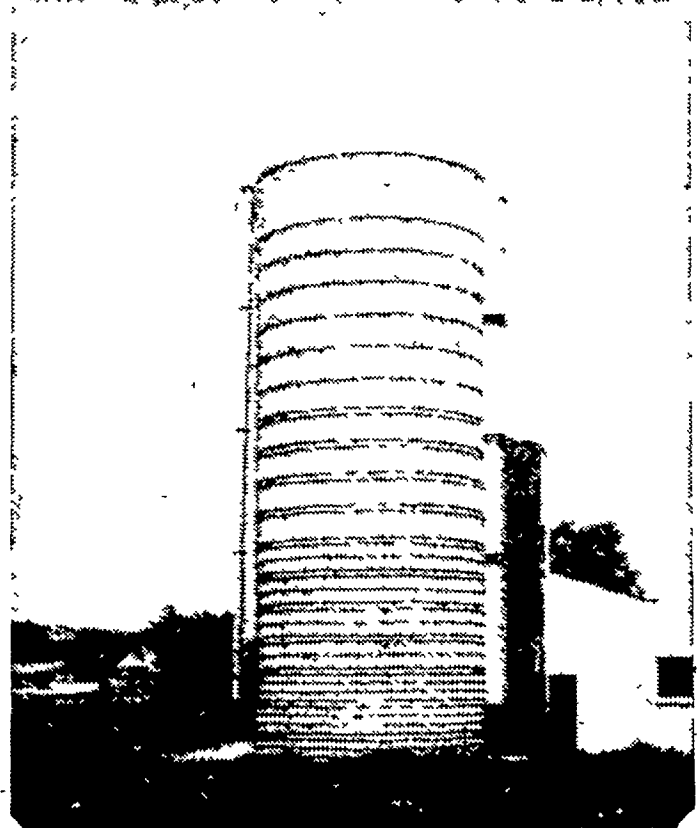


E. M. HERR EQUIPMENT, INC.

R. D. 1, Willow Street

717-464-3321

TERRE HILL SILOS MONOLITHIC & CONCRETE STAVE SILOS



More Quality More Strength More Economy

Silos • Silo Unloaders • Bunk Feeders
Silage Distributors

TERRE HILL SILO CO., Inc.

East Earl R. D. #1, Pa. 17519

Phone 215-445-5767

SINCE 1927