

● **Farm Briefs**

(Continued from Page 17)

helfer calves, at 39 million, were both off 2 pct. from a year earlier and lowest since records began in those categories in 1930.

But, these declines were more than offset by increasing beef cattle numbers. At 91,135,000 head, all beef cattle were up 3 pct. from a year earlier and record high. Cows 2 years and older, at 37.4 million head, up 3 pct., while heifers 1 to 2 years,

at 97 million, and calves, at 29.1 million, both up 4 pct. Steers 1 year and older, at 13 million head, and bulls 1 year and older, at 20 million head, both up 2 pct.

Meanwhile, sheep and lambs on feed, at 20,422,000 head, were not only down 4 pct. from a year earlier, but the lowest since records began in 1867. Hogs and pigs, at 567 million head, were down 6 pct. from a year earlier, but chickens, (excluding broilers) at 431.5 million, were up 3

pct., and turkeys, at 67 million, were up 1 pct.

Value of all livestock and poultry on farms, at \$235 billion, was up 16 pct. from a year earlier and record high. Meat animals (cattle, hogs, and sheep) at \$22.9 billion, compared to \$19.7 billion a year earlier.

**Hog Cholera Outbreaks Up In '69**

The number of hog cholera outbreaks up sharply last year. There were 1,481 confirmed in the U.S. during the year. That's up 80 pct. from the 1968 total (of 822). But, it's well below the 5,000 to 6,000 estimated outbreaks that occurred yearly before the nationwide eradication program began in 1962.

Despite the increase, USDA officials are optimistic over the progress made toward eradication. The reason: Nearly 75% of the national total were in 7 states: Mo. (218), Texas (213), N. Car. (208), S. Car. (110), Ark. (93), Md. (78), and Va. (64). Moreover, 16 States had no outbreaks, and 10 States had four or less each.

**Net Income Per Farm At \$5,468**

Gross farm receipts, estimated at a record \$54.6 billion during 1969, up from \$51.1 billion in 1968. Realized gross farm income estimated at close to \$16.3 billion during 1969, with net income per farm estimated at \$5,468, up from \$4,805 in 1968.

Livestock and livestock product receipts were estimated at \$28.5 billion, compared to \$25.5 billion a year earlier, with prices received by farmers for livestock and livestock products, up 12 pct.

Receipts from crops, at \$18.8 billion, were up slightly from 1968, with crop production up slightly, but prices off slightly.

Farm production expects, at \$38.6 billion, were up \$2.3 billion from a year earlier and record high.

When in the elevator with women passengers aboard, always take your hat off. Not only is it polite, it saves the hat from being crushed when the ladies rush the door.

● **USDA Probes**

(Continued from Page 17)

er to cancel or extend uses of 2, 4, 5-T on food crops," the letter said. "Our January 1, 1970, date was based on DHEW's expectation that they would have reached a decision by that time. That agency believes that the public interest would best be served by waiting for additional research data which will be available shortly. We concur in their judgement."

The inquiry launched by the Department into the possibility of excessive contamination of other pesticides with the same substance found in the 2, 4, 5-T

sample used in the Bionetics study will include seventeen herbicides, fungicides, and insecticides. All seventeen compounds are polychlorophenolic pesticides. Appropriate and immediate action to protect the public health will be taken if evidence resulting from this inquiry justifies it.

**Over 40?**

Over 40? Remember to ask your doctor about a procto as part of a regular health checkup.

According to the American Cancer Society, it's your smartest move against a form of cancer that is most common among both men and women.

**GROWING CORN IN 70?**

Let us help you plan for higher YIELDS and bigger PROFITS.

HERE'S HOW... USE —

**Anhydrous Ammonia** A nitrogen source as good as the best and more economical than most.

**Blended P & K** Efficient-Economical and Fast

Custom application or rental equipment available for all products

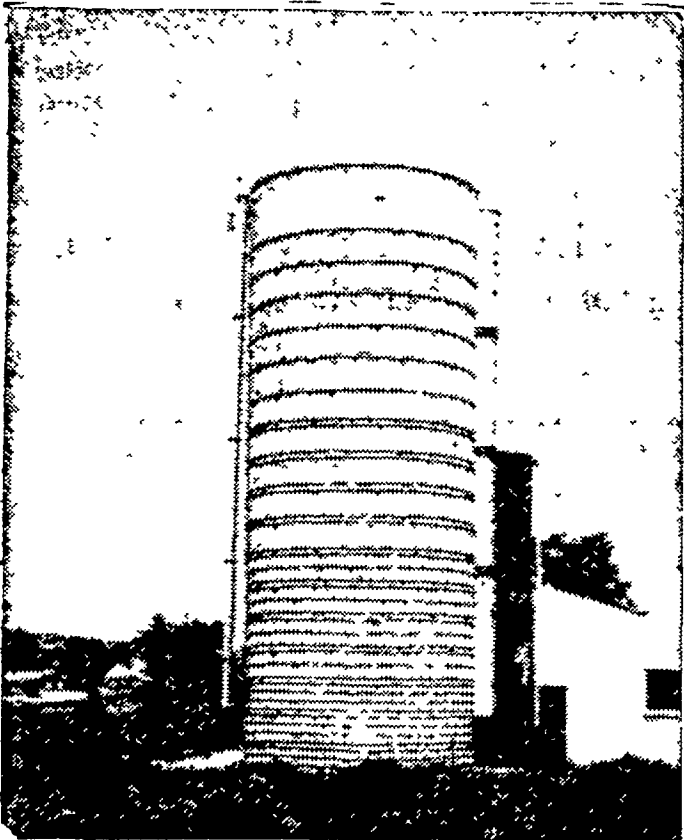
**ORGANIC PLANT FOOD CO.**

GROFFTOWN RD., NEXT TO WATERWORKS

Ph. 392-4963 or 392-0374

YOUR FULL SERVICE DEALER

**TERRE HILL SILOS MONOLITHIC & CONCRETE STAVE SILOS**



More Quality More Strength More Economy

Silos ● Silo Unloaders ● Bunk Feeders Silage Distributors

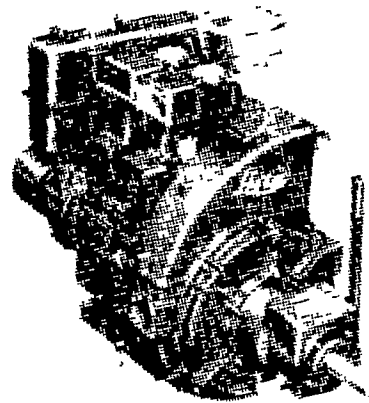
**TERRE HILL SILO CO., Inc.**

East Earl R. D. #1, Pa. 17519 Phone 215-445-5767

SINCE 1927

**DISTRIBUTOR FOR LISTER DIESELS SALES - PARTS - SERVICE**

We sell from 3 1/2 K. W. to 100 K. W. Generator Sets.



Lister Diesels can be mounted on various pieces of equipment.

FREE ESTIMATES ON SET-UPS Such as: Irrigation, Refrigeration, Electric Generating Plants, etc.

Also Creamery Package Bulk Milk Tanks

**C. B. HOOBER & SON**

Intercourse, Penna.

Phone: 768-8231



**MIGHTY MIX FOR MILK**

**Ful-O-Pep Super Milking 32**

More and more profit-minded dairymen are increasing milk production—and milk checks—with Ful-O-Pep Super Milking 32, the mighty mix for milk!

At low cost, too, because you use your own grain, balanced with essential nutrients in Super Milking 32. This popular concentrate contains 32% protein—high-quality, complete proteins. It's power-packed with needed vita-

mins, minerals, molasses . . . all to help you build an efficient ration for heavy, continuous milk flow.

Ask for simple, easy formula. We'll be glad to show you how to make a powerful 16% milk-making feed—with economy—using only about 500 lbs. Ful-O-Pep Super Milking 32 per ton. We know you'll be pleased with the results. So drop by as soon as you can.

**Stevens Feed Mill, Inc. S. H. Hiestand & Company**

Leola

Salunga

**Harold H. Good**

Terre Hill

**Stevens Feed Mill, Inc.**

Stevens



MAKE US YOUR FARM HEADQUARTERS