

Ephrata Young Farmers Hold First Annual Banquet

The Ephrata Area Young and Adult Farmers' Association held its first annual banquet last Friday in the Mt. Airy Fire Hall. One hundred sixty eight members, wives and guests attended.

Dr. Walter K. Trumbauer and C. Daniel Biemesderfer were honored guests selected to receive appreciation award plaques for their service to the Ephrata Area Young Farmers' Association and the adult farmer program of Ephrata High School.

Dr. Trumbauer, a veterinarian in the Ephrata area, assisted the group on several occasions with animal health meetings and courses.

● New Inspection (Continued from Page 1)

The use of extenders and colored wrappers both of which were previously prohibited in Pennsylvania now are permitted he said.

"There are but a few examples of the changes that will result from the less stringent regulations under which we now operate," he added.

The double standard of inspection — under both federal and state regulations — often created difficult and confusing situations for meat processors and packers. Secretary Bull said "Uniform regulations will be an important factor in easing trade restrictions that stemmed from this double standard," he added.

Secretary Bull pointed out the new regulations "merely permit the use of practices and products previously banned in Pennsylvania. This does not mean that meat packers and processors must use these practices and products. Packers generally will be as much concerned with the quality of their products under the new regulations as they were in the past."

Holstein Association Needs Calves For Sale

The Lancaster County Holstein Association met Friday, Feb. 6 and announced that they need more calves for the sale sponsored by the State Association in Harrisburg on April 4.

Also discussed was a Pennsylvania Booklet insert to be published in the World issue on April 25 and Lancaster County Breeders are asked to participate. Also anyone interested in the Pennsylvania Holstein News needs more participants.

The county needs more Holstein Farm signs and a committee was appointed to handle it which includes Clyde Martin, chairman, Daniel S. Stoltzfus and Kenneth M. Rutt. A special discount will be given on the signs until March 1.

The association will also hold their annual Black and White Show on Thursday July 30 at the Guernsey Sale Barn. The directors voted unanimously to co-sponsor a class at the All American Show in Harrisburg.



God is our refuge and strength.—(Psalms 46:1).

When we need the added strength, God is there to give it. When we need healing, God is our healing. When we need courage, God is our courage. When we need faith, God is our rock, our strong foundation in whom we can trust.

Biemesderfer, Superintendent of Ephrata Area Schools District, was recognized for his interest and support of agricultural education. Upon receiving the award Biemesderfer said, "The credit should go to the community and the school board."

Trophies were presented to top award winners of the 1969 corn growing contest. Top placings in the corn silage program were: Jesse Balmer, R.D. #4, Lititz, 11,670 pounds of total digestible nutrients; Luke Ray Zimmerman R.D. #2 Ephrata, 11,091.2 pounds TDN/A; Cliff Bollinger, R.D. #4, Lititz, 11,026.4 pounds TDN/A. TDN yield was determined for each of the thirteen state entities by Penn State forage analysis.

High yield awards in corn grain went to Paul Bucher, R.D. #4, Lititz, 157.56 bushels of shelled corn per acre; Alvin Bollinger, R.D. #1, Lititz, 149.61 bu./A; Earl G. Martin R.D. #2, Ephrata, 148.99 bu./A.

Over thirty five persons participated in the corn growing contest and management program. Forage test kits and trophies were sponsored by nineteen agricultural businesses in the Ephrata area. Area businesses also provided food prizes.

Warren F. Bollinger, retiring president, was toastmaster. Giant Heilman, agricultural photographer of Lititz, presented a colored slide presentation entitled, "Agriculture in the U.S."

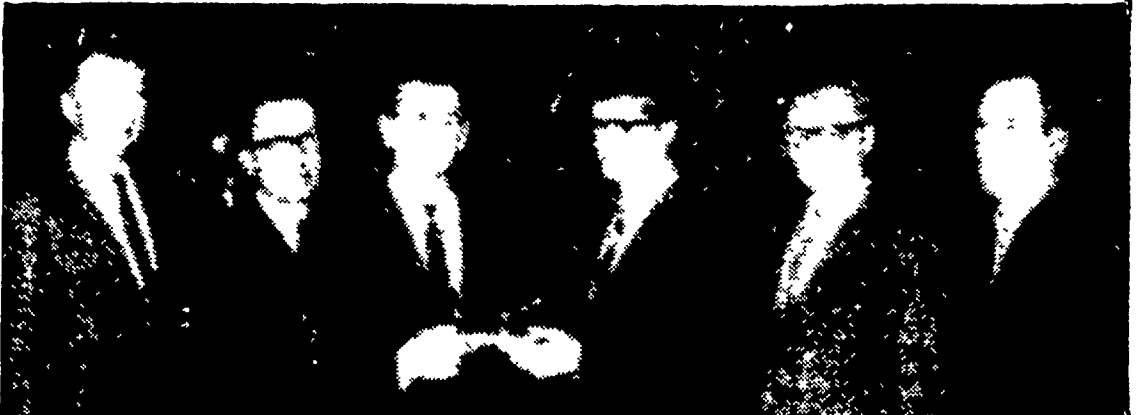
Henry Givler, area agriculture education advisor, installed the new officers: Earl Stauffer, Pennsylvania FFA treasurer, represented the state association; Robert Martin, secretary, and Jay Foreman, public relations director of Pennsylvania Young Farmers' Association, represented the state young farmer association.

Charles Ackley, Ephrata Area Young Farmer Association advisor, was presented an appreciation plaque from the retiring officers.



David Zimmerman (center), retiring secretary of the Ephrata Area Young and Adult Farmers' Association presents Appreciation Awards to C. Daniel Biemesderfer (left), Superintendent of Ephrata Area School District and Dr. Walter K. Trumbauer, veterinarian, Ephrata R1.

fer (left), Superintendent of Ephrata Area School District and Dr. Walter K. Trumbauer, veterinarian, Ephrata R1.



Newly-elected officers of the Ephrata Area Young and Adult Farmers' Association are (left to right): Jesse Balmer, Lititz R4, Public Relations; John R. Zimmerman, Ephrata R1, treasurer; Warren Bol-

linger, retiring president receiving pen set and gavel; Mahlon Eberly, new president; Earl Smoker, R1 Stevens, vice-president; and Marvin R. Sauder, R2 Ephrata, secretary.



Corn award winners at the Ephrata Area Young Farmers and Adult Association banquet last Friday were: (left to right), Cliff Bollinger, Lititz R4; Luke Ray

Zimmerman, Ephrata R2; Jesse Balmer, Lititz R4; Paul Bucher, Lititz R4; Alvin Bollinger, Lititz R1; and Earl G. Martin, Ephrata R2.

Purina Dairy Conditioner Special can prepare cows for good production at low cost



If you're not among the many good local dairymen who have started mixing Purina Dairy Conditioner Special with your own grain to build a research-proved dry cow ration, it can pay you to check into this low-cost way of feeding dry cows.

Purina Dairy Conditioner is a 16 percent protein ration, fortified with extra Vitamins A and D plus phosphorus to help guard against milk fever.

To help you save on dry cow feeding, Purina Research recommends varying feeding levels, depending on cow condition and the quality of your roughages. For example, if a cow is in good condition and your roughages are of excellent quality, you would feed less Purina dry cow ration than if the cow were in only fair condition and if the roughages were of only fair quality.

Using Purina Check-R-Mix formulas we can build you a low-cost dry cow ration, combining Purina Dairy Conditioner with your grain. Or, if you're feeding low-protein roughages, it may pay you to feed Dairy Conditioner "straight" — just as it comes from the bag.

More and more successful area dairymen are proving that good dry cow feeding pays off in extra cow condition — and extra milk production in the next lactation. For example, 100 to 200 pounds of additional body weight at freshening can pay off in 1,000 to 2,000 pounds of extra milk during the lactation.

Drop in soon and get your free copy of the Purina Dry Cow Program folder. We'll be glad to point out how Purina Dairy Conditioner Special can help prepare your dry cows for good production at low cost.

*Reg. Trademark—Ralston Purina Co.

John J. Hess, II, Inc.
Ph 442-4632
Paradise

John B. Kurtz
Ph 354-9251
R D 3, Ephrata

James High & Sons
Ph 354-0301
Gordonville

West Willow Farmers Assn., Inc.
Ph 464-3431
West Willow

Ira. B. Landis
Ph 394-7912
1912 Creek Hill Rd., Lanc.

Wenger's Feed Mill Inc.
Ph 367-1195
Rheems

