

Miller & Bushong Conducts Workshop For Employees

A two day workshop was held at the Host Town Monday and Tuesday by Miller and Bushong Inc., Rohrerstown.

Henk Wentink, General Manager of Marketing and Farm Operations conducted the affair. Other speakers from the firm were Tom Culton, General Manager of Feed Production who presented a paper on "Green Pastures Calf and Dairy Feeds"; Cleve Hastings, Manager of Broiler Production spoke on "Broiler Management Today"; Robert Rollins, Manager of H & M Farms Division discussed "Laying Flock Service"; and Dr. Richard Peacock, Miller & Bushong nutritionist, spoke on the "Nutrient Requirements in Early Bird Poultry and Green Pasture Swine Feeds".

Guest speakers that participated in the workshop and their subjects were Dr. Samuel Guss, Pennsylvania State University, Dairy Service Problems; Dr. Robert Gentry, Pennsylvania State

University, Poultry Service Problems; and Dr. Lloyd Colony, American Cyanamid Company, "Swine Management and Health Problems Associated with Modern Hog Production".

The workshop was termed an "outstanding success" by company officials.

Placements of broiler chicks in the Commonwealth during the week ending January 24 were 970,000. The placements were 6% above the same week a year earlier and 2% above the previous week. Average placements during the past 10 weeks were 16% above a year earlier. Settings for broiler chicks were 1,758,000 — 2% below the previous week but 5% above the comparable period a year earlier. The current 3-week total of eggs set is 8% above the same period a year ago. In shipments of broiler-type chicks during the past 10 weeks averaged 13,000, compared with 25,000 a year ago. Outshipments averaged 311,000 dur-



Discussing the program at the Miller & Bushong workshop held this week are (left to right): Ralph Everett, Miami, who assisted in conducting the workshop; Henk Wentink, M & B General Manager of Mar-

keting and Farm Operations; Tom Culton, M & B General Manager of Feed Production; and Robert Graybill, M & B President.

ing the past 10 weeks, 19% above a year earlier. 22 STATES — Placements in the 22 States were 57,849,000 — 1% above the previous week and

14% above the same week a year earlier. Average placements during the past 10 weeks were 13% above a year ago. Settings were 76,043,000 — slightly above the

previous week and 12% above a year earlier. The current 3-week total of eggs set is 12% above the comparable period a year ago.

Beef & Hog Men . . . this \$70 trip could change your life!

(Few seats remaining)



JET TO ILLINOIS with PENN-JERSEY HARVESTORE!

HERE'S WHAT WE'LL SEE . . .

Jet with other Penna. Beef & Hogmen on Feb. 18 & 19 to one of the great Beef-Hog areas in Ill. Find out how these Beef-Hog men make big money producing Beef & Pork.

Your HARVESTORE dealer has arranged with the Philadelphia and Harrisburg airports a special, chartered jet to fly you to Peoria, Ill. for the two day tour. And at a special rate Only \$70. Including all transportation, motel, meals & tips.

One idea could change your entire Beef-Hog operation. So treat yourself to a two day business vacation (tax deductible) and some eye-opening, almost unbelievable facts about producing more Beef and Pork.

SCHEDULE

The HARVESTORE Jet originates at Philadelphia, stops at Harrisburg on its way to Peoria, Ill. the morning of February 18th.

Ask your dealer when your reservation is confirmed (he'll contact you) about departing time and gate. There'll be no baggage check, so take only what you can carry.

We'll have you back in Philadelphia or Harrisburg the evening of the 19th.

Call Today —

PENN-JERSEY HARVESTORE SYSTEMS, INC.

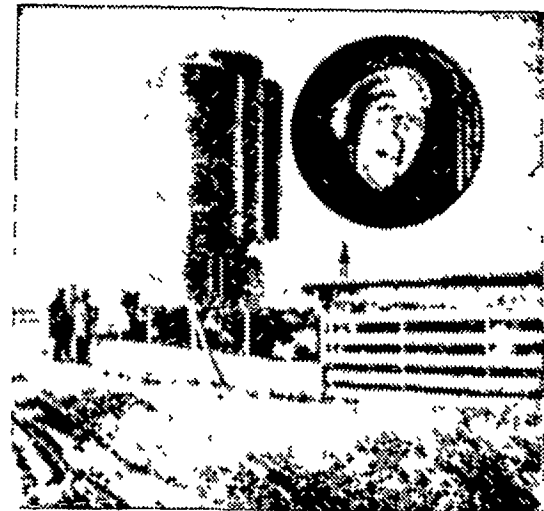
New Holland, Pa.

717-354-5171



STROLLER

Father and son produce over 1,100 pounds of beef per acre. Feed out 600 calves and 200 yearlings per year in open-front, slatted floor semi-confinement building.



DUNMIRE

Backgrounds own feeders on Nebraska ranch. Feeds 400 head in conventional lot with liquid manure pit. Gets 2 to 2.3 pounds of gain per day in finishing program.



HOWARD

Feeding 450 head of cattle per year in controlled environment, slatted floor building. Feeds 400 head per year in outside lot. Farrows and feeds out over 1600 hogs per year in confinement. All on less than 500 acres with a minimum of hired help.



BAIRD

Unique plan kept three sons farming. Each owns his own farm but they operate as a single unit. A thousand tillable acres produce 1,100 cattle plus certified seed.

Blanchard Farm —

Albert Cook operates this 400 acre farm and raises 400 head of cattle, 1,700 hogs with practically no help. Spends less than \$1,000 a year for hired labor.