

## Deficient Water Supplies Exist In Numerous Areas

Supply will be the most urgent water resource problem in Pennsylvania within the next 10 years according to community leaders surveyed in 53 of the 67 counties

Supply will even exceed the current major problem of pollution, reports S M Leadley, rural sociologist with the College of Agriculture at Pennsylvania State University

The statewide survey examined opinions of community leaders in the Allegheny, Susquehanna, and Delaware River Basins

Listed as other major water resource problem in all three river basin areas were municipal waste disposal, domestic on-site disposal, industrial waste treatment, and acid mine drainage

Lack of financial support was considered the most difficult obstacle to overcome Only the southeastern region, the Delaware River Basin, cited any obstacle more serious than financial support This region called multiple political jurisdiction more vexing

In solving domestic on-site disposal problems community leaders felt generally that "inappropriate public attitudes" were the major hindrance

On the outlook for water, many areas already have inadequate supplies for their needs In other areas, the quantity is sufficient but much is unusable because of pollution Even where adequate supplies of potable water are available, distribution systems are often underdeveloped and antiquated

Regarding municipal wastes, people in the survey felt that municipal areas cannot handle the problem adequately Respondents felt attention should be given to estimating the feasibility of unified countywide or statewide systems.

The problem of domestic on-site disposal was attributed to inadequate or non-existent local zoning ordinances — as well as the failure of section 537 of the Sewage Facilities Act to accomplish what it should The major cause of the domestic on-site disposal problem was said to be soil unsuited for waste disposal

Additional problems cited by community leaders include industrial waste disposal, acid mine drainage, water for recreation, flood damage, and low stream flow Also listed were planning, mosquito control, transportation, weed control, stream bank erosion, feeding of water fowl, irrigation, sedimentation

## More Acres For Public Hunting

The Pennsylvania Game Commission has approved the purchase of 2,102.5 additional acres of land to be used for public hunting.

Tracts being purchased, at a total cost of \$62,910, are located in Armstrong, Bedford, Blair, Bradford, Crawford, Erie, Huntingdon and Somerset counties Monies for the acquisitions will come from the Game Fund.

Three important personnel changes are being made by the Game Commission. Donald C Madl, Armstrong County district game protector, will become a new conservation information assistant in the South west Field Division, with headquarters in Ligonier.

James C. Hyde, land manager in the Northwest Field Division, will become Pittman-Robertson area leader, coordinating federal aid projects in the Southcentral Field Division with headquarters in Huntingdon.

Robert H Myers, Pittman-Robertson area leader for the Northeast Field Division, will become the law enforcement assistant for the Northeast Division, maintaining headquarters at Dallas

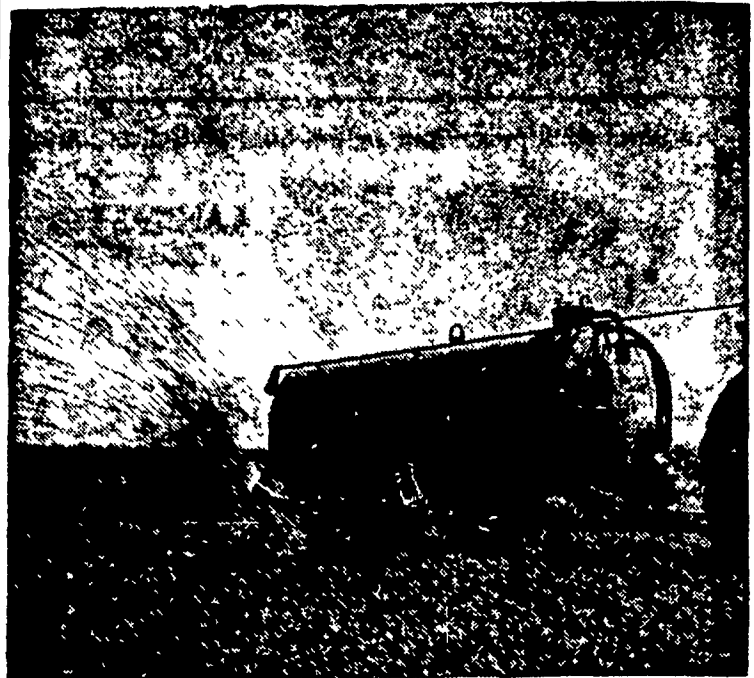
The Game Commission also announced that it has revoked the hunting licenses of 332 individuals for infractions of the Game Law License privileges have been restored to two persons by the Game Commission

## Alarm Frightens Grumelli Intruder

A burglar alarm at Grumelli Farm Service, Quarryville R2, frightened away an intruder at the building early Thursday.

John Groff, a nearby resident,

heard the alarm sound at 5:15 a.m. and notified Chief of Police Charles H. McCrabb, East Drumore Twp who investigated. The intruder fled when the alarm sounded without gaining entrance.



**"BETTER-BILT"  
LIQUID MANURE SPREADER**

DISTRIBUTED AND SOLD BY

**S. M. MANUFACTURING Co., Inc.**

Owl Hill Road

R. D. 4, Lititz, Penna.

Phone 717-626-8585

Call or Write For Free Demonstration

## Correspondence

### Courses

#### Farm Record Keeping

Complete and systematic record keeping is vital to profitable farming Records sufficient to file income tax reports and to make social security deductions aren't enough

Records that present a mental picture of the entire farm business are needed Plans for expanding or cutting back enterprises loan applications in emergencies, and even answers to the question of continuing in business depend on carefully kept and complete records

Farmers or family members can learn systematic recordkeeping in The Pennsylvania State University correspondence course "Farmers Account Book" The eight-lesson course deals with crop and livestock enterprises, costs of production, and the practical application of records

Start now to learn farm accounting Send your name and address with \$3.45 to Farmers Account Book, Box 5000, University Park, Pa 16802 Make checks payable to Penn State There are no other charges and the complete course comes to you by mail

There were 88,000 cattle and calves on feed for slaughter in Pennsylvania on January 1, according to the State Crop Reporting Service This was 5 percent more than a year earlier

Where  
There's  
Help,  
There's  
Hope



Give to the  
**MARCH OF DIMES**  
Prevent Blindness

# We've got a good thing growing for you.

Having an Evergreen Passbook Savings Account is like owning a money tree.

You get a guaranteed 5% annual interest, blooming crisp and green through the year. Your money is compounded daily. Which simply means that the interest your money earns one day starts earning its own interest the very next day. The result: your true annual interest rate is actually higher than 5%.

All it takes to start an Evergreen Passbook Account is (a) you and (b) \$100. Stop in at any of our 28 convenient offices and find out the full story.

At 5% interest, with daily compounding, Commonwealth's got a good thing growing for you.

