

Farm Show Assn. Meeting

(Continued from Page 36)

Tuesday, January 13

9:00 a.m.-12:00 Noon

"Update on Seed Improvement," Dr. Henry D. Gerhold and Edgar Palprint, School of Forest Resources, The Pennsylvania State University.

"Should I Raise My Own Transplants," Edward Farand, Extension Forester, The Pennsylvania State University

Manufacturers' Panel, Roger Tobias, moderator.

Report of Executive Secretary.

Wednesday, January 14

9:00 a.m. — Special Meeting Room B, Main Show Building.

PENNSYLVANIA CROP IMPROVEMENT ASSOCIATION, INC.

Wednesday, January 14

1 00 p m — General Membership Meeting, Foods and Chemistry Library, Department of Agriculture Building

6 30 p m — Corn Growers Banquet, Department of Agriculture Cafeteria
Recognition of Winners
Pennsylvania Five-Acre Corn Club
Pennsylvania One-Acre Corn Contest

PENNSYLVANIA DAIRYMEN'S ASSOCIATION

Tuesday, January 13

6:30 p.m.—Annual Meeting and Banquet, Penn-Harris Hotel Ballroom.
Election of Directors
Presentation of Dairy Recognition Awards

SOCIETY OF FARM WOMEN OF PENNSYLVANIA

51st Annual State Convention Monday, January 12

10 00 a m — Opening Ceremonies, The Forum Education Building

1 00 p m — Convention reconvenes

4 00 5 30 p m — Coffee Hour, Scottish Rite Cathedral, 2701 N Third Street

6 00 p m — State Banquet, Scottish Rite Cathedral Tuesday, January 13

9 00 a m — Annual Business Meeting, Room F, Main Show Building

PENNSYLVANIA FLYING FARMERS ASSOCIATION

Wednesday, January 14

10.00 a.m.-12 00 Noon—Meeting, Room E, Main Show Building

FUTURE FARMERS OF AMERICA

Tuesday, January 13

9 30 a.m.—Executive Committee Meeting, Room 321, Education Building

1:30 p.m.—Executive Committee Meeting reconvenes

Wednesday, January 14

9 30 a.m.—Executive Committee Meeting reconvenes

12.30 p.m. — Annual Awards Convention, The Forum, Education Building

Lancaster Farming, Saturday, January 10, 1970--37

Concert, State FFA Band Open Ceremony

Address—Donald N. McDowell, Executive Director, National FFA Foundation, Inc.

Conferring Honorary Keystone Farmer Degrees

Presentation of FFA Citations

Introduction of American Farmers

Presentation of Agriculture Proficiency Awards

Conferring of Keystone Farmer Degrees.

Star Farmer Ceremony, Closing Ceremony

FUTURE HOMEMAKERS OF AMERICA

Monday, January 12

1 30 p m — Executive Council Meeting, Room 103 Executive House

Tuesday, January 13

9 00 a.m. — Executive Council Meeting reconvenes

1 30 p m — Executive Council Meeting reconvenes

6 00 p m — Red Rose Dinner, Holiday Inn Town

(Continued on Page 38)

Start raising more and better Calves the Easy NURS-ETTE way

No more carrying pails of warm water or hand mixing milk replacer. Just fill the hopper of the NURS-ETTE with milk replacer and the NURS-ETTE will mix milk replacer and warm water and keep it warm until calf nurses the mix (approx. 14 oz.)

Then it will mix a fresh batch of water and replacer.

For more information contact

YOUNG BROS.

NURS-ETTE SALES AND SERVICE

Ph. 717-548-2462

Peach Bottom, R. D. 1, Pa. 17563

WILL BE LOOKING FOR YOU

At The Penna. Farm Show
New Holland Booths.

C. E. WILEY & SON

Quarryville, Penna.

Phone 786-2895

OLIVER 1650

Row Crop Tractor with
greater productivity—
economy—
comfort!



- **Greater power.** High-torque gas, diesel or LP-gas engines develop 66 pto observed hp—certified by Oliver!
- **Ideal design.** 3½ tons of weight, distributed ideally over long wheelbase produces greater pull, less slip.
- **New comfort.** 3-position Tilt-o-scope steering column . . . full hydraulic power steering . . . new deluxe comfort seat . . . new easy-read gauges including oil and amp.
- **No-stop shifting.** Hydra-Power Drive* cuts speed ¼, steps up pull ⅓ on the go . . . 12 forward speeds in all.
- **New efficiency.** Battery-saving alternator standard . . . new dry-type air cleaner keeps abrasives out of engine better.
- **Tailored to need.** New dual-speed pto* . . . Hydra-lectric* implement control system . . . choice of 3-pt. hitch or wide swinging drawbar.

*Special equipment



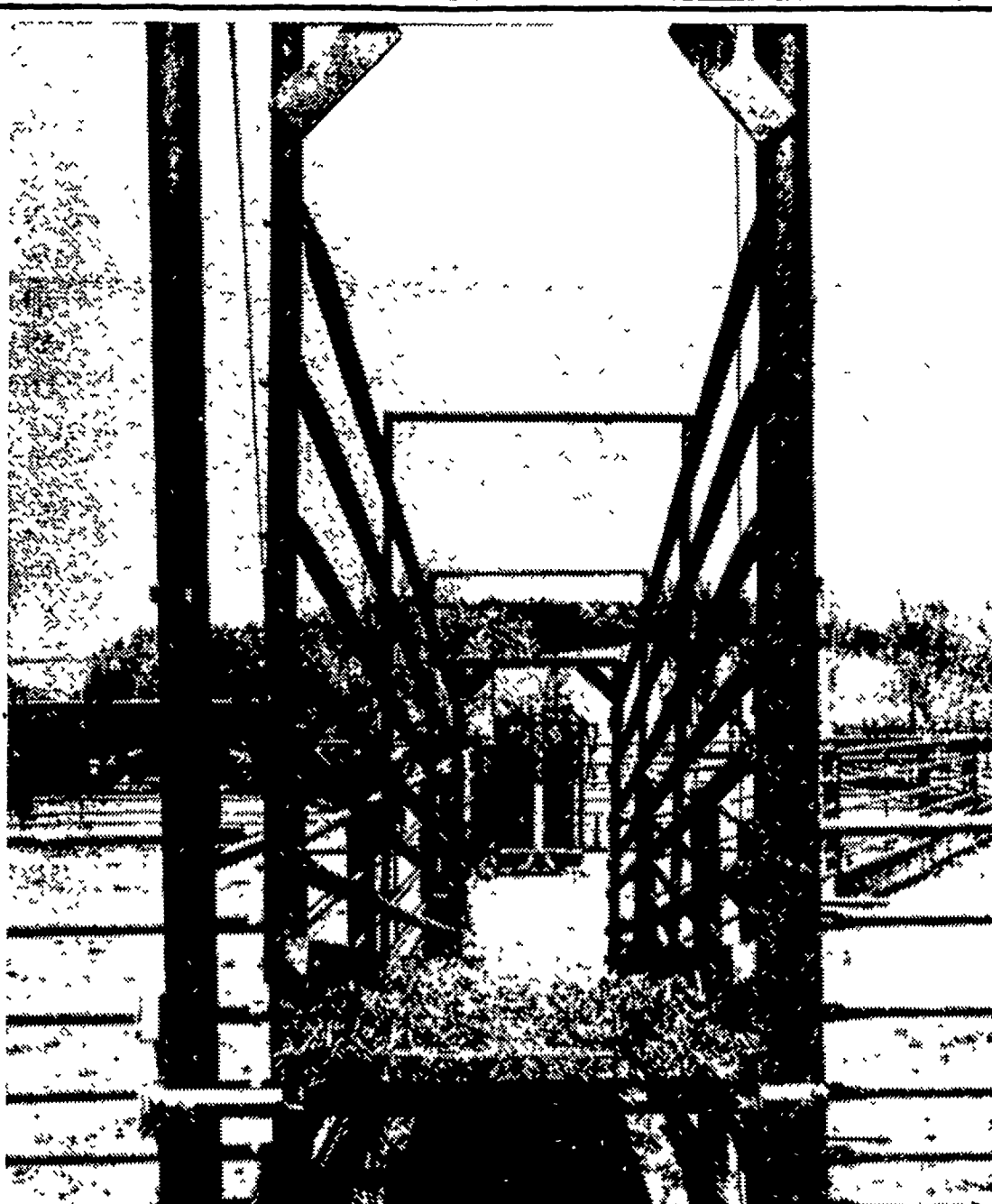
Come in now and see the most dynamic tractor fleet in history.

N. G. HERSHEY & SON
Manheim, Pa.

FARMERSVILLE EQUIPMENT CO.
R. D. 2, Ephrata, Pa.

CHAS. J. McCOMSEY & SONS
Hickory Hill, Pa.

See Us At The Farm Show



Custom Feed Lot Equipment Installed At
Greystone Manor Farms, R. D. 1, Leola, Penna.

Farm and Ranch Gates
Cattle Guards
Head Gates
Feed Bunks

Creep Feeders
Salt and Mineral Feeders
Portable Loading Chutes
Free Stalls

PHONE OR WRITE FOR FREE CATALOGUE AND PRICES.

FREY BROTHERS

R. D. 2, Quarryville, Penna. 17566

Phone 717-786-2235
Fred Frey, Mgr.