



BED WARMERS FOR SLEEPING COMFORT

Provides sleep inducing relaxation. Provides year around protection from chilling.

Provides Complete Year-Round Sleeping Comfort. Remember 1/3 of Your Life is Spent in Bed. Enjoy it to the Fullest with **ELECTRO-WARMTH.**

For Information and Details Write To
Box 197 L.F.
Terre Hill, Pa. 17581



CREATE A HEALTHY ENVIRONMENT IN YOUR POULTRY HOUSES USE

"LITTER - LIFE"

A Mineralized Culture To "Treat" Built-Up Litter

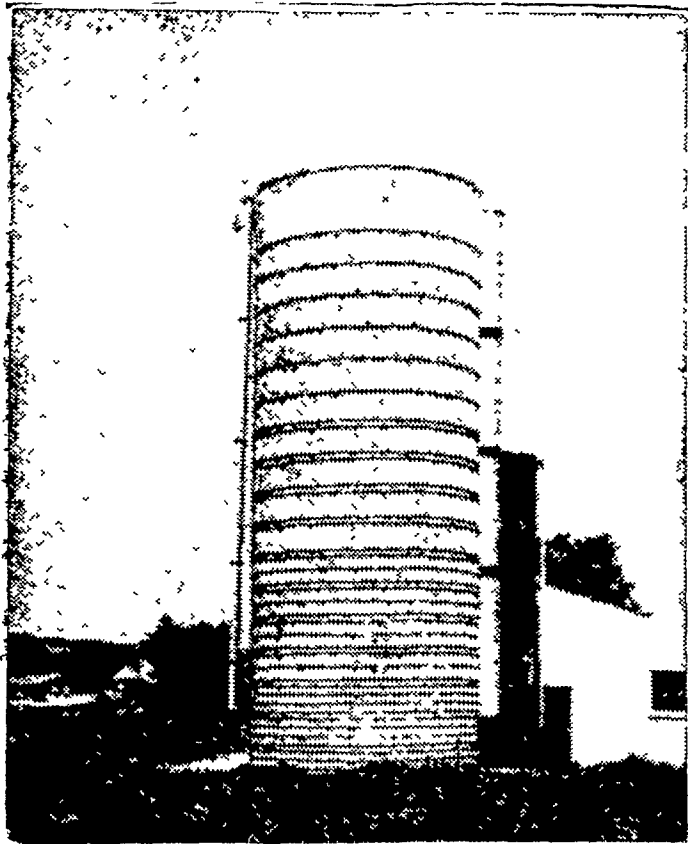
An OLD concept made effective . . . with NEW scientific techniques

WE WILL BE LOOKING FOR YOU AT THE FARM SHOW BOOTH #513

ZOOK & RANCK, INC.

R. D. 1 Gap, Penna. 17527 Phone 717-442-4171

**TERRE HILL SILOS
MONOLITHIC & CONCRETE
STAVE SILOS**



More Quality More Strength More Economy

Silos • Silo Unloaders • Bunk Feeders
Silage Distributors

TERRE HILL SILO CO., Inc.

East Earl R. D. #1, Pa. 17519 Phone 215-445-5767
SINCE 1927

**Farm Women
Reset Meeting**

A meeting postponed by the Society of Farm Women 1. last Saturday has been rescheduled and will be held at the home of Mrs. Raymond Newcomer on Friday, January 9 at 7.30 p.m.

Miss Rachel Bollinger will show slides and give an illustrated commentary of her recent trip to Ecuador.

**Farmland Acreage Dips
As Population Grows**

By L. H. Bull
Pa. Secretary of Agriculture

Since 1960 Pennsylvania has lost almost two million acres of farmland . . . land that was di-

verted to a multitude of non agricultural purposes

Much of this diverted acreage was used to meet the land requirements of our increasing population and Pennsylvania's rapidly expanding economy

As a matter of fact, Pennsylvania's population has increased by approximately half a million persons during the decade now drawing to a close. Some economists predict another million will be added by 1980

Concern over these trends prompted Governor Raymond P. Shafer to appoint a committee two years ago to study the situation and recommend steps for the wise use of land

Earlier this month this committee — the Governor's Committee for the Preservation of Agricultural Land — presented its report and suggested a plan for conserving vital farmland.

The plan proposes establishment of agricultural use areas with a minimum of 4,000 contiguous acres and curbs to check possible diversion of this land to other uses

It also recommended establishment of a commission, "possessing experience and knowledge in agriculture," which would review proposed conversions of agricultural land

The committee added this comment:

"Prime agricultural land is a basic raw material which man can shape and use for any purpose. Once the topsoil is removed and concrete or asphalt is poured, this land is permanently removed from food and fiber production. Moreover, it is no longer filtering rainfall or fostering the growth of oxygen-giving plant life."

"The committee is convinced," it reported, "that the preservation of a portion of the Commonwealth's best agricultural land is absolutely necessary and vital to the social and economic well being of Pennsylvania."

Most impatient fellow in the world is the one waiting for you to finish your tale of woe so that he can begin to tell you his sad story

**FORMULA 70
Brand
RED CLOVER**



New Disease Resistant Red Clover

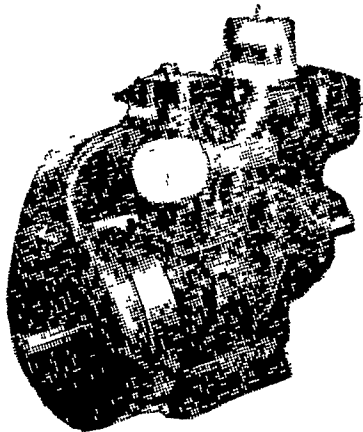
An exclusive Hoffman development. Formula 70 Brand is a scientifically formulated blend of improved varieties of red clover. Heavy-yielding, well-adapted, improved varieties. PRE-INOCULATED.



See Your Hoffman Seed Man

Hoffman FARM SEEDS
ALFALFA • CLOVER • OATS • HAY • PASTURE • FORAGE • COVER CROPS.

★ **"Petter Power Pays"** ★
WORLD LEADERS IN
DIESEL ENGINE DESIGN



1 1/2 to 45 H.P.
Continuous Rating

MAKE US PROVE IT!

Over 1,000 Amish farmers already have. They have found that Petter delivers all it promises. Our diesels provide long working life, dependability and good cold starting characteristics.

**IT GOES
MUCH BETTER
POWERED
BY PETTER**

For Prompt and Efficient Service Call
YOUR AUTHORIZED PETTER DISTRIBUTOR

GEHMAN BROS.

Gas and Diesel Engines Sales and Service
1 Mile North of Terre Hill on Route 897
East Earl, R. D. 1, Pa. Phone 215 445-6272
WE ARE AS CLOSE AS YOUR TELEPHONE

**When
POWER FAILS**



PROTECT YOUR FARM
WITH A PINCOR PTO
TRACTOR DRIVEN ALTERNATOR

- 50,000 watts surge capacity
- 16,000 watts continuous duty
- Slow speed—1800 RPM operation
- Cool running triple chain drive transmission
- Heavy duty motor starting
- Close voltage regulation
- Meets NEMA codes
- Heavy duty construction
- Induction hardened input shaft
- Rain proof construction
- Completely wired control
- Three phase available box

SEE PINCOR ALTERNATORS
AT THE FARM SHOW
BOOTH 715

SEE IT AT . . .
Haverstick Bros.
2111 Stone Mill Rd.
Lancaster, Pa. 17603
Ph. (717) 392-5722

