

What Is PH?

The acidity or alkalinity of a soil is expressed by the term PH. The scale ranging from 3.0 (extremely acid) to 9.0 (strongly alkaline) is found in our soils, although the scale runs from 1 to 14.

A soil is considered neutral at PH 7.0. It is alkaline above that point and acid below it. The higher the figure the more alkaline and the lower the figure the more acid it is.

Too frequently the layman thinks that a pH of 6.0 is just a little more acid than 7.0, but this is not the case. The measure of acidity of a soil at pH 6.0 is 10 times more acid than at pH 7.0 while at 5.0 it is 100 times more

acid and at pH of 4.0 the strength of the acidity is 1,000 times that at pH 7.0. When it is clearly understood by all farmers that the measure of acidity progresses logarithmically rather than by the addition of 10 times for each whole number of variance from neutral (pH 7.0), they will have a better realization of the importance of liming.

The first approach to any soil nutritional problem is to test the soil and correct the pH as needed by the addition of the recommended amount of lime. Unless the acidity problem is corrected, the fertilizers — both those applied and those native to the soil — will not react properly and production will be disappointing.

● Miss Stoltzfus (Continued from Page 1)

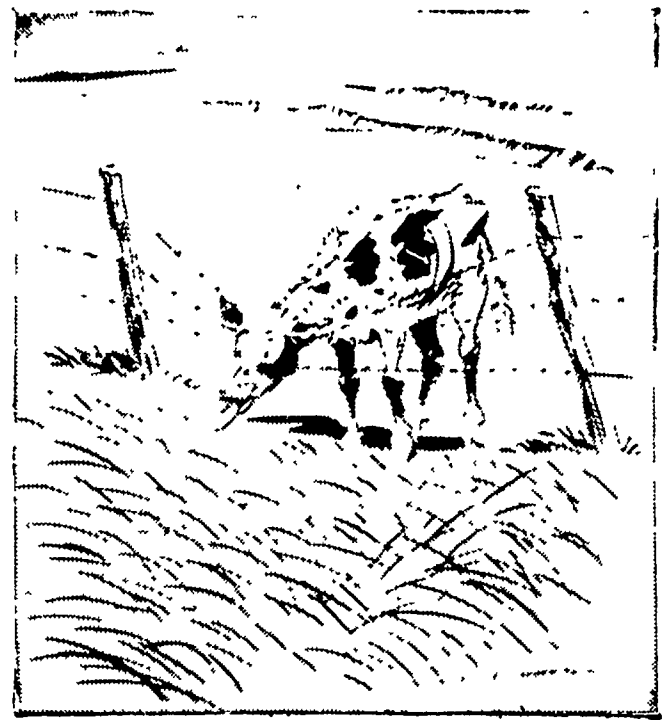
According to Jesse Balmer, local chairman, Miss Joyce Stoltzfus, the soft-spoken daughter of Mr. and Mrs. Melvin Stoltzfus, Ronks R1, will vie with six other young contestants from other districts in Pennsylvania on January 11 in the Fair Show Building.

Miss Stoltzfus told Lancaster Farming that the relatively new contest is designed to encourage 4-H and FFA members to become junior members of the breed association and the queen may get involved in milk sales promotions.

The local representative is already established as a Guernsey breeder, owning eight Registered Guernseys on her family farm. She was a member of the winning State 4-H Dairy Judging Team from Lancaster County in 1968, and was named champion breed showlady and reserve breed fitter at the local 4-H dairy round-up in 1969.

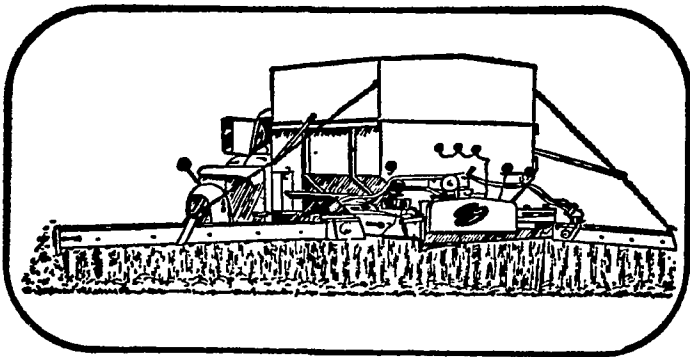
Joyce is studying practical nursing at the General Hospital in Lancaster now and would like to stay on the farm in the future and be a part of the 4-H Guernsey Club activities as long as she is eligible.

Conservation Corner



GRASS, NOT WEEDS, FILLS NEEDS

APPLY LIME ON FROZEN GROUND

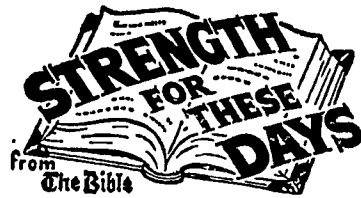


Don't hesitate to apply lime, even if the ground is frozen. The freezing and thawing action of winter helps disseminate the lime, assuring you a properly balanced soil, ready for spring plowing. And remember, liming pays in extra bushels and tons of crops and forage.

MARTIN'S LIMESTONE

Blue Ball, Pa. 354-4125

Gap, Pa. 442-4148



God is not a God of confusion but of peace.—(1 Cor. 14:33).

What a joy it is to realize that we can condition ourselves to act and react with the poise we so much desire to express. Never again need we give in to petty irritations; never again need we speak too quickly, act too hastily. Let us be patient in our daily encounters and rely on prayer and the Christ spirit of peace and love to assist us.

DID YOU MAKE NEW YEAR'S RESOLUTIONS?

Here's a resolution you can make, and one that you will keep!

What is it?

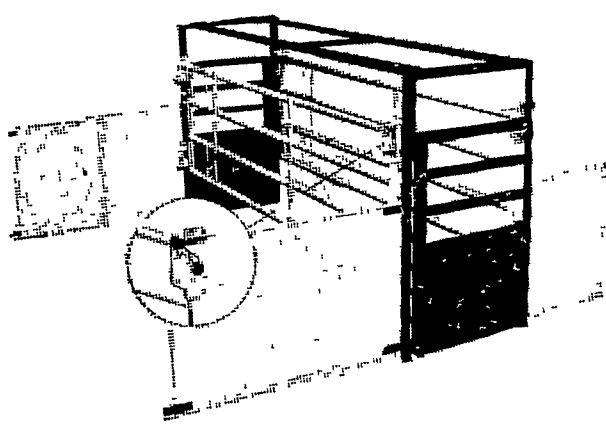
It's a resolution to feed Red Rose Dairy Feeds!

When you choose to use Red Rose Dairy Feeds you will provide your animals with feeds that are geared to maintain your herd, encourage maximum milk production — and return that extra profit.

IN 1970 — be determined to make your dairy operation pay better. Start now by resolving to feed Red Rose Dairy Feeds. It will be the best resolution you ever made.

Start now by calling your Red Rose dealer. You'll be pleased with the service you get.

ATTENTION HOG PRODUCERS! BROWER Better-Built Hog & Cattle Equipment



Farrowing Crates

- Cleaner — more sanitary
- Sows cannot crush pigs
- No draft on pigs
- Sets up in seconds — no bolts or nuts
- Saves 1-3 extra pigs out of each litter
- Sturdily built for larger sows



Low-Boy Hog Feeders

- Guaranteed 15 years
- 12 - 16 ga. self closing doors
- Easy feed flow adjustment
- Weatherproof
- Eliminates crowding
- Saves feed
- Various sizes and models

ALSO: Lamb Creep Feeders ● Cattle Waterers ● Holding Crates
Infra-red gas brooder ● Sow Waterers ● Hog Founts ● Creep Feeders
Feed Mixers ● Steel Panel Gates

Write or stop in for free illustrated catalogue
DISTRIBUTED EXCLUSIVELY BY:

E. M. HERR EQUIPMENT, Inc.

Willow Street R. D. #1, Pa.

Ph. AC 717 464-3321

Walter Binkley & Son
Lititz

David B. Hurst
Bowmansville

Brown & Rea, Inc.
Atglen

Martin's Feed Mill, Inc.
R D 3, Ephrata, Pa.

Elverson Supply Co.
Elverson

Mountville Feed Service
Mountville

Henry E. Garber
R. D. 1, Elizabethtown, Pa.

Musser Farms, Inc.
Columbia

L. T. Geib Estate
Manheim

Musser's Mill
The Buck

I. B. Graybill & Son
Refton

Chas. E. Sauder & Sons
Terre Hill

E. Musser Heisey & Son
R. D. #2, Mt. Joy, Pa.

Ammon E. Shelly
Lititz

Heistand Bros.
Elizabethtown

E. P. Spotts, Inc.
Honey Brook

Red Rose Farm
Service, Inc.
N. Church St., Quarryville

H. M. Stauffer & Sons,
Inc.
Witmer