

## Nice Bucks Show Up At Deer Check Stations

A number of nice bucks showed up at the Pennsylvania Game Commission's deer check stations during the first week of buck season this year, according to initial reports from the stations.

Wildlife management officers examined about 4,000 bucks, including deer which weighed over 155 pounds from Westmoreland, Perry, Clarion, Tioga and Luzerne Counties.

Twelve point racks from Westmoreland and Susquehanna Counties were checked, and 11-pointers were spotted from Potter, Tioga, Lycoming, Sullivan, Cameron, Jefferson and Clarion Counties.

The smallest buck was a yearling 62-pounder from Clarion County, while a 65-pound yearling taken in Clinton County was also checked.

Among the "unusual" were a 2½-year-old antlered doe, with two polished points, taken in Centre County; a 2½-year-old doe with 4-inch spikes from Jefferson County; a 1½-year-old button buck from Clarion County; and three pinto albinos.

Prior to the season, the Game Commission had anticipated at least 45,000 to 50,000 antlered deer would be harvested. It now appears almost a certainty that this happened.

The Game Commission had desired a minimum antlerless

deer harvest of 55,000 to 60,000, and it is quite probable that this figure was at least equalled.

Mail bags full of deer kill report cards are pouring into Game Commission headquarters daily, and it may take up to two months to process the information to arrive at final deer harvest figures.

Of course, archers still have fourteen days in which to take a whitetail, starting December 26 and concluding on January 10.

Game Commission personnel are pleased with the size of the 1969 deer harvest. Although the state's whitetail herd had reached a manageable level in many areas, there were still some sections where there were too many deer for available winter food supplies.

Of some concern now to wildlife management personnel is the snow which has covered the state almost continuously since the first of December. Although snow depths generally have not reached critical levels, in some mountain areas there were thirty inches on the ground this week.

Additional heavy snowfalls in the near future could soon produce a snow cover of four feet, and should the deep accumulations persist over a lengthy period of time, along with cold temperatures, winter starvation

### Open (Continued from Page 1)

The classes that are being offered for this show will be the same as for the State Farm Show and are as follows:

Class 1 — Wrapper B's — Div. A—Long wrappers, over 26 inches. Div. B—Short wrappers, 26 inches and under.

Class 2 — Filler B's — Div. A—Long fillers, over 26 inches. Div. B—Short fillers, 26 inches and under.

Class 3 — Binder Type — Div. A—Long binders, over 26 inches. Div. B—Short binders, 26 inches and under.

Class 6 — FFA Wrappers — C1—No length specified.

Class 7 — FFA Fillers — C2—No length specified.

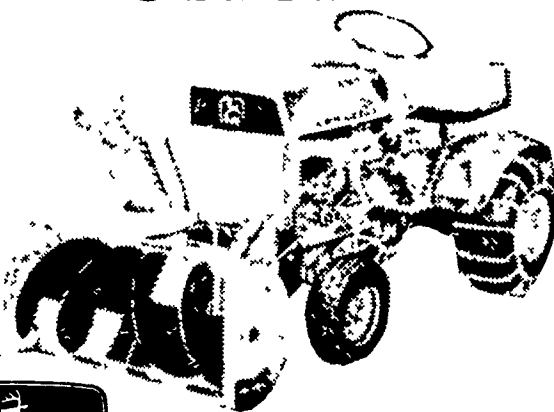
A hand of tobacco shall consist of 15 leaves, tied with another tobacco leaf, select leaves that are uniform in size, color, texture and free from insect, disease or mechanical damage. The Filler B types of tobacco are usually heavier in texture while the

Wrapper B is a medium weight leaf, chestnut-brown color with good stretch. The Binders should have a very thin, silky leaf, light chestnut color with plenty of life and stretch. All exhibits entered in the County Show will be taken to the State Show unless the exhibitor states otherwise. Growers not able to bring their tobacco to the County Show and desiring to exhibit at the State Show, may bring their exhibit to the Fair and Home Center by Friday, January 9th and

the Extension Agents will see that it gets to the Farm Show Building. The tobacco should be well wrapped to prevent drying out.

Try A Classified — It Pays

## Special offer



Purchase any John Deere Lawn and Garden Tractor and matching equipment between now and Feb. 28, 1970. No finance charges until spring! Just our way of saying Season's Greetings. See us for complete details.

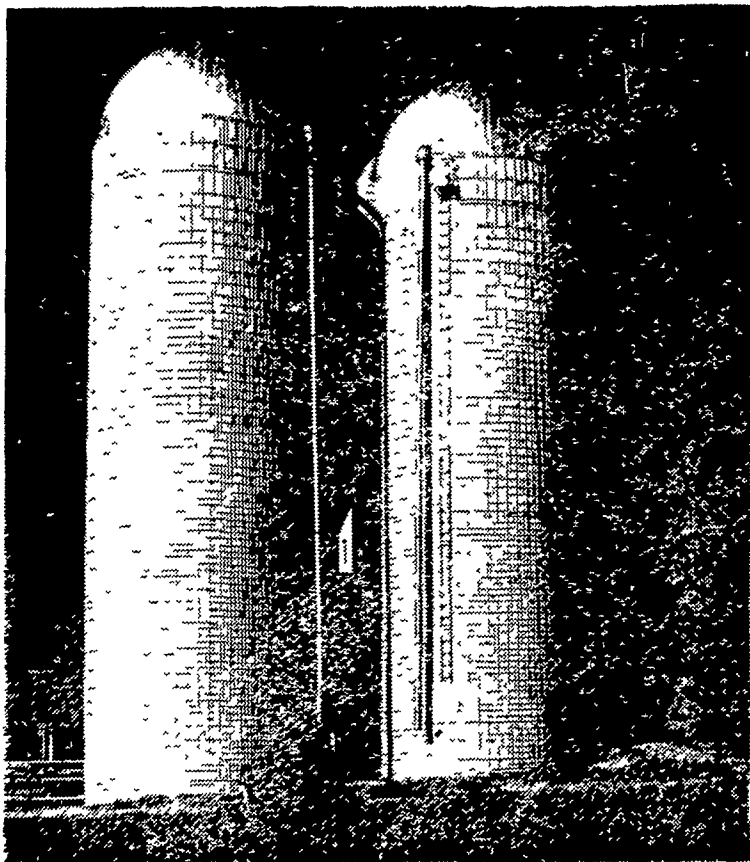
## Landis Bros., Inc.

1305 Manheim Pike, Lancaster, Penna.

SALES ★ 393-3906 ★ SERVICE

## LANCASTER SILOS ... VIBRATED & CORRUGATED STAVE SILOS

Designed and Built For Strength



Contact Leroy Zook, Salesman

C. B. HOOBER & SON  
Intercourse  
717-768-8231 or 215-593-5793

SAM SHERER  
R D. 1, Mt. Joy  
717-653-5207

Also See Us For Starline Silo Unloaders and Bunk Feeding Systems

Manufactured in Leola by

## LANCASTER SILO COMPANY

2436 Creek Hill Road, Lancaster, Pa. 17601

## Announcing: a dry "pop-up"! Can cut planting time in half!



Ortho Unipel STARTER SPECIAL.

A starter? As a "pop-up"? It has to be special. It is STARTER SPECIAL is a completely unique product. Here's why:

— Physical Uniformity STARTER SPECIAL pellets are made to the same shape and density for maximum consistency and control in application.

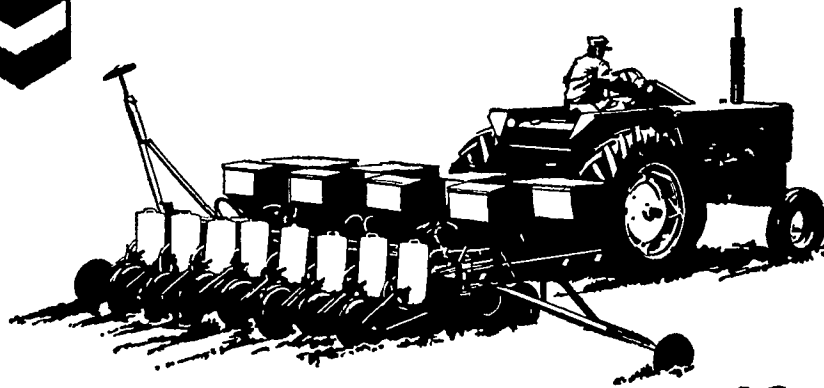
— Chemical Uniformity Each and every STARTER SPECIAL pellet has all three primary nutrients — nitrogen, phosphorus, potassium — chemically homogenized in precisely the most desirable ratio 13-34-10. The nutrients can't separate or segregate during handling as with troublesome, hard-to-regulate "dry blends."

— Double Duty Nutrients STARTER SPECIAL has both quick-acting and long-lasting nitrogen and phosphorus for thorough plant feeding. There is no urea or diammonium phosphate that might endanger the seed through liberation of free ammonia.

Of course, these features also make it highly effective as a banded starter. But, with only slight adaptation of most planters, it can be applied directly with the seed in exacting measurement for safety and maximum response.

With this kind of control, you apply much less material — only 1/3 the amount needed for banding. And the reduced material handling could cut your planting time in half!

So, save time, trouble, and money at planting time. See us soon about applying STARTER SPECIAL this spring as a dry "pop-up".



TAKE ADVANTAGE OF OUR EARLY SEASON DISCOUNTS

— Distributed By —

## P. L. ROHRER & BRO., INC.

TM's Ortho, Chevron Design Unipel Reg. U.S. Pat. Off.

Smoketown, Pa.

Ph. Lanc. 397-3539