

**Local Holstein Herds Reported Over 700 Lbs.**

A pair of local Holstein breeders were reported to have DHIR herd lactation averages over 700 pounds of butterfat according to an announcement from the Holstein-Friesian Association of America. The report was for the 1968-69 testing year.

They are: John & Helen Far- rington, Shawnee Valley Farm, Lititz, who have 20 completed production records averaging 19,341 pounds of milk and 732 pounds of butterfat.

And Donald S. Eby, Breezy Glen Farm, Gordonville, with 38

completed production records averaging 17,535 pounds of milk and 703 pounds of butterfat.

DHIR and DHIA records are compiled differently and therefore the above report should not be mistaken for standings in the local testing association.

Other local herds listed on the report were:

Hiram S. Aungst, Elizabeth- town, has 31 completed production records averaging 16,292 lbs. of milk and 645 lbs of but- terfat.

Elam Bollinger, Manheim, has 46 completed production records averaging 16,566 lbs. of milk and 614 lbs. of butterfat.

John W. Eshelman & Sons, Lancaster, have 26 completed production records averaging 17,442 lbs. of milk and 675 lbs of butterfat.

J. Mowery Fry & Son, Fulton- way Farms, Lancaster, have 80 completed production records averaging 17,476 lbs of milk and 680 lbs of butterfat.

Robert C. Groff, Groffdale Farm, Quarryville, has 29 com- pleted production records aver- aging 16,874 lbs. of milk and 625 lbs. of butterfat.



OFFICERS OF EPSILON SIGMA PHI, national honorary Extension fraternity, for 1970, elected at the organization's recent annual meeting on The Pennsylvania State University campus are, seated from left: B. Wayne Kelly, Extension farm manage- ment specialist, vice president; and M. M.

Smith, Lancaster County agricultural agent, president. Standing, from left: Philip Sellers, Allegheny County agricul- tural agent, annalist; and W. W. Clarke, Extension entomologist, secretary-treasur- er.

**Tune In The Ole Sheriff**

(Bobby Montgomery)

**WIOV-105.1 FM**

**6 to 8 P.M.**

Monday thru Saturday

**AGWAY**



**Bulk Metered Service**

**Equipment Engineering and Installation**

**Rental Equipment**

Box 1197, Dillerville Road

Lancaster, Pa.

Phone 397-4954

For information and service call "Doug"

**ADA's "Something Else" Series To Run 52 Weeks**

"Something Else", a new 52- week series of half-hour, net- work quality, color television shows, will be syndicated in 90 selected markets starting Janu- ary first, under the sponsorship of American Dairy Association.

The series was recently named as the top American musical ser- ies of the year by The Hollywood Festival of World Television. The Festival noted in its pro- gram: "The desire for a visual,

contemporary form in a musical series featuring top musical and comedy performers doing their 'thing'; filmed in various loca- tions through the US. The re- sult is a show aimed at the 18 to 35 year olds, who, as surveyed by the producer, usually grow bored and disinterested with the static effect of a taped perfor- mance on a sound stage. . . the program travels around the coun- try filming the 'in' performers doing their 'in' music at the 'in' places."

Host and continuing star of the lively, stylish program is young comedian and impressionist John Byner. The "Action Faction" — eight fresh young girl dancers — comprise the rest of the perma- nent cast. Guests and cameo ap- pearances will be made by many of the famous names in the cur- rent music field, among them:

Lou Rawls, Jim Webb, Taj Ma- variety . . . show . . . led to a series featuring top musical and comedy performers doing their Pete Fountain. The special fea- ture of the series — its filming entirely on location in the places most likely to appeal to viewers — will take it to such spots as San Francisco, New Orleans, Ha- waii, Aspen and Carmel.

The program's format, using currently popular performers, is designed to attract teen and young adult audiences, from the age when girls began to be "milk dropouts" to the age of young marrieds, beginning to raise their own families.

Each show will carry two one- minute milk messages — many of them cast commercials—with time for local sponsors to buy other commercials. "Something Else" will be shown in prime and fringe times.

**1000**



**GREEN STAMPS**



- On All New Single Payment Certificates at 5 1/4 %
- Full-Paid Certificates of \$200 or More at 4 1/2 %
- Optional Payment Accounts of \$200 or More at 4 1/2 %
- Or Additions of \$200 or More to Existing Accounts

Take advantage of this special offer! For a limited time only, you can save and have something to spend as well—1,000 Green Stamps given one time to an account. You can make your invest- ment by mail or in person and phone inquiries are welcome. Do it today!

**PHONE 238-8252**

**STATE CAPITAL SAVINGS AND LOAN ASSOCIATION**

108 N. Second St., Harrisburg  
Branch Office: Camp Hill Shopping Center

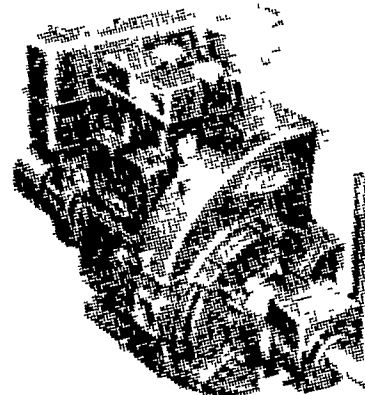


Member Federal Home Loan Bank System  
Insured up to \$15,000 by Federal Savings and Loan Insurance Corporation



**DISTRIBUTOR FOR LISTER DIESELS SALES - PARTS - SERVICE**

We sell from 3 1/2 K. W. to 100 K. W. Generator Sets.



**Lister Diesels can be mounted on various pieces of equipment.**

**FREE ESTIMATES ON SET-UPS**  
Such as: Irrigation, Refrigeration, Electric Generating Plants, etc.

**Also Creamery Package Bulk Milk Tanks**

**C. B. HOOBER & SON**

Intercourse, Penna.

Phone: 768-8231