



A SPECIAL STEER project has been started this year for the Grassland Chapter of FFA in New Holland. Two businesses, Sauder Feed Mill and New Holland Supply Co., both at New Holland purchased the steer and in a contest Larry Horst, wrote the best essay in the Chapter to get the steer. In the above photo, Earl Sauder

is presenting the duPont bred steer to Larry. Robert Schroll, of the supply company was not present at the time. Larry, a Junior at Garden Spot is the son of Mr. and Mrs. Melvin Horst, Leola R1. He will show the steer at Ephrata Fair and the Pa. Livestock Exposition in Harrisburg next year. L. F. Photo

Flowers Brighten A Home in your home Look over what about those flowers or potted During and between Christmas might be available at your local plants that may be available and Easter, you can have flowers flower shop or greenhouse Ask when you need them. Potted

Lancaster Farming

SECOND SECTION

Egg Price Quotes Differ

Egg trading interests in Chicago received a jolt on Wednesday, November 26, when the market was quoted differently from egg prices offered on the Chicago Mercantile Exchange Spot Board among egg producers who believe it has been systematically worked to their disadvantage.

Chicago interests offered small lots of eggs at 59c, off 3c from the 62c level of Tuesday. The Chicago reporter, however, won enthusiastic praise from egg producers by assessing the true supply and demand situation in the Midwest and quoting the price at 60½ cents, off 1½ cents from the 62 cents level of Tuesday.

Egg Producers, who are hard-pressed to meet commitments due to the current shortage of eggs could see no justification for a 3c price drop Wednesday and were jubilant about the Chicago Reporter's stand. The price discovery method used in the egg industry has long been a point of bitter controversy.

United Egg Producers, a nationwide cooperative which represents over 40% of the nation's egg production, immediately fired off a telegram praising the Chicago Reporter's action.

The telegram follows:
Gentlemen

We commend you on your historical and responsible action in quoting the Chicago Cash Egg Market realistically on Wednesday, 11/26/69. We feel that your quote represents true values and was not unduly influenced by trading on the board. In the judgement of many, spot trading does not always reflect true supply and demand. We offer you our full cooperation and access to information supplied to us from egg producers and marketers from throughout the United States to aid you in making final price determinations based on true market conditions. (Signed) United Egg Producers.

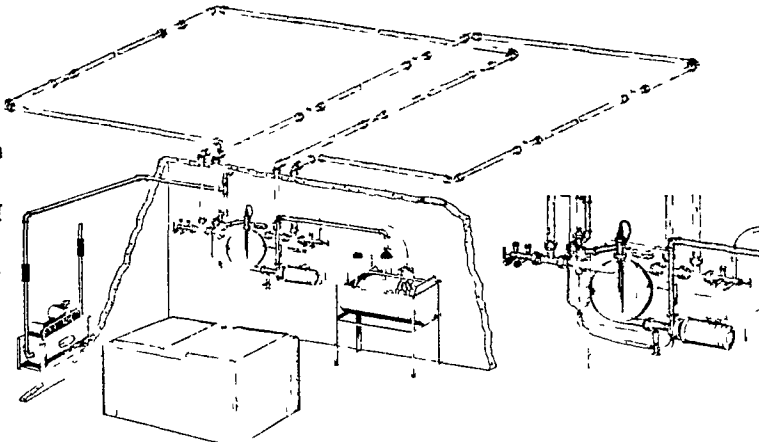
chrysanthemums and colorful foliage plants may be available now, remind extension floriculturists at The Pennsylvania State University

Perfection Can Put A Pipeline In Any Barn

WHY BUY A PIPELINE?

For An Average
40 Cow Herd
You Can . . .

1. Save walking 100 miles a year.
2. Save carrying 292 tons of milk a year.
3. Save 200 hours per year on an average herd.
4. Produce higher quality milk.
5. Increase your milk production.



WHY BUY A PERFECTION PIPELINE?

1. Engineered for the modern dairy farm of today as well as the dairy farm of tomorrow. Around the barn pipelines and milking parlors.
2. The only milkhous control unit that is assembled at our modern new factory on a stainless steel panel. Pretested for trouble free operation, self-draining with patented washing features.
3. Built and guaranteed by Perfection Milker-Division of Sta-Rite Industries, Inc., of Delavan, Wisconsin, a recognized leader in home water systems and agricultural components.

- 24 Hour Milking Equipment Service
- Installation and Service

CALL TODAY AND ASK FOR AN APPOINTMENT

Agway Bee Line's Local Commodity Technician is:

MR. FRED KERLIN

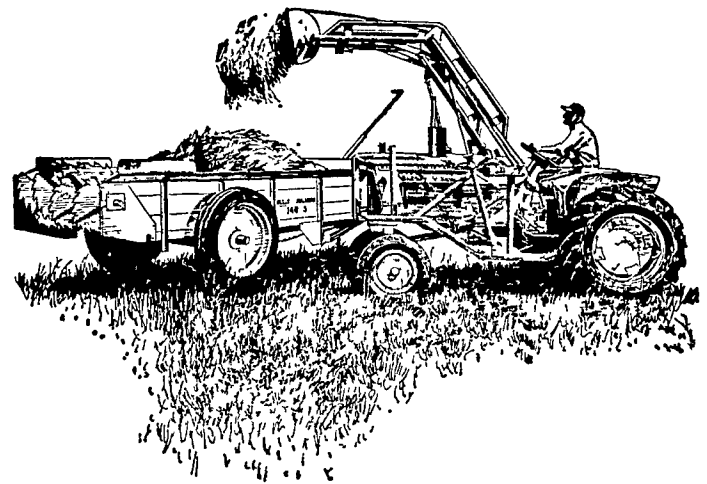


BEE-LINE SUPPLY CENTER

1027 Dillerville Road, Lancaster
24 Hour Service Daily — Ph: 717-397-4761



"This spreader covers more ground per round!"



Blanket coverage single beater— new Allis-Chalmers 140-S Spreader!

Here's the popular 140-bushel single beater spreader with fourteen aggressive tooth paddles weighing 8 lbs. each on a rugged 3½-inch shaft. You get real shredding action when they smack into packed or frozen chunks! See us for Allis-Chalmers 140- or 180-bushel single or multiple beater spreaders that do the job!



L. H. Brubaker
Lititz, Pa.

N. G. Myers & Son
Rheems, Pa.

Nissley Farm Service
Washington Boro, Pa.

Grumelli Farm Service
Quarryville, Pa.

Roy H. Buch, Inc.
Ephrata, R.D. 2

L. H. Brubaker
Lancaster, Pa.

Allen H. Matz Farm Equipment
New Holland