

● Farm Women

(Continued from Page 17)

Eshelman and Mrs. Harry Weider, were welcomed into the group.

Contributions were made to the Salvation Army, American Bible Society, Crippled Children and Retarded Children.

Mrs. Raymond Dixon and Mrs. Cyrus Neff were appointed delegates to the State Convention. The Society will sponsor a bus trip to the Convention in Harrisburg on Jan. 12. For reservations contact Mrs. Frank Hodecker.

The new yearbooks were distributed by Mrs. Frances Lefever. Christmas carols were sung, under the direction of Mrs. Charles Shank, accompanied at the piano by Mrs. Edwin Eshelman. Gifts were exchanged.

The next meeting will be held Jan. 3 in the home of Mrs. Raymond Dixon, 2349 Middlegreen Court, Village of Old Hickory. Guest speaker will be Mrs. Arthur Poyck.

SOCIETY 22

Society of Farm Women 22 held a Christmas meeting Tuesday at the home of Mrs. Harold Rudy, 502 Penn Grant Rd., with Mrs. Paul Miller as co-hostess.

Mrs. Floyd Anderson was installed as a new member. Mrs. Lloyd Heir, Mrs. Jay Landis and Mrs. Kenneth Funk will be the delegates to the State Convention in Harrisburg in January. Mrs. Henry Hess is alternate.

The program featured the exchanging of gifts, carol singing and games. The next meeting will be Jan. 20 at the home of Mrs. Lester Landis, 2088 Creek Hill Rd. Mrs. Cloyd Wenger will be co-hostess.

SOCIETY 23

Fifty animals were stuffed for the Venture Club Toys for Tots project at a recent meeting of

Society of Farm Women 23 of Washington Boro. At the meeting held in the home of Mrs. John Hess, Washington Boro R1, 14 dolls were also dressed for the project.

Mrs. Charles Frey assisted the hostess. Devotions were in charge of Mrs. Andrew Nissley.

During the business meeting, Mrs. J. Clayton Charles, president, gave a resume of her term of office. Approved was a gift of a Christmas dinner and two turkeys to be given to three area families, and a money gift to be sent to two Washington Boro families, who have seriously handicapped members requiring medical care. These gifts will be sent in advance of the Christmas holiday.

Mrs. Paul Keagy, ways and means chairman, reported on plans for upcoming refreshment stands at sales. She also discussed the part sales and made suggestions.

Society 23 was in charge of the dessert and beverage table at the recent Benefit Auction held at the Farm and Home Center.

The next meeting of the group will be Tuesday, Dec. 30 at the

● Have You Heard?
(Continued from Page 17)

must be pliable so you can force it easily through the press on ungreased baking sheets. Bake pressed cookies until set. The decorative shapes are attractive in themselves, but if you wish you can sprinkle the unbaked cookies with colored sugar or cinnamon sugar.

When You Buy Your Holiday Turkey

If you're selecting your turkey more than three days in advance of the day you'll serve it, better buy a frozen one.

Choose the frozen turkey that has an undamaged wrapper. Exposure to air dries out the meat and encourages a rancid off-flavor to develop.

You can safely buy fresh turkey two or three days in advance. Select a bird with clean waxy skin, without bruises or discolorations, few pinfeathers, and a well-distributed layer of fat.

For a mouth-watering bird, choose a meaty turkey, with broad breast and short, thick legs and thighs.

When you buy a ready-to-cook turkey weighing twelve pounds

home of Mrs. J. Clayton Charles, Lancaster R2, at which time secret pals will be revealed.

or less, allow one pound of meat for each serving.

When you buy medium or heavy ready-to-cook birds, birds weighing twelve pounds and over, figure on two servings from each pound.

Try A Classified — It Pays

ARIENS ARROW SNOWMOBILES

BUY NOW!



LANDIS BROS. INC.

1305 Manheim Pike, Lancaster, Penna.
SALES ★ 393-3906 ★ SERVICE

A G W A Y

LP GAS

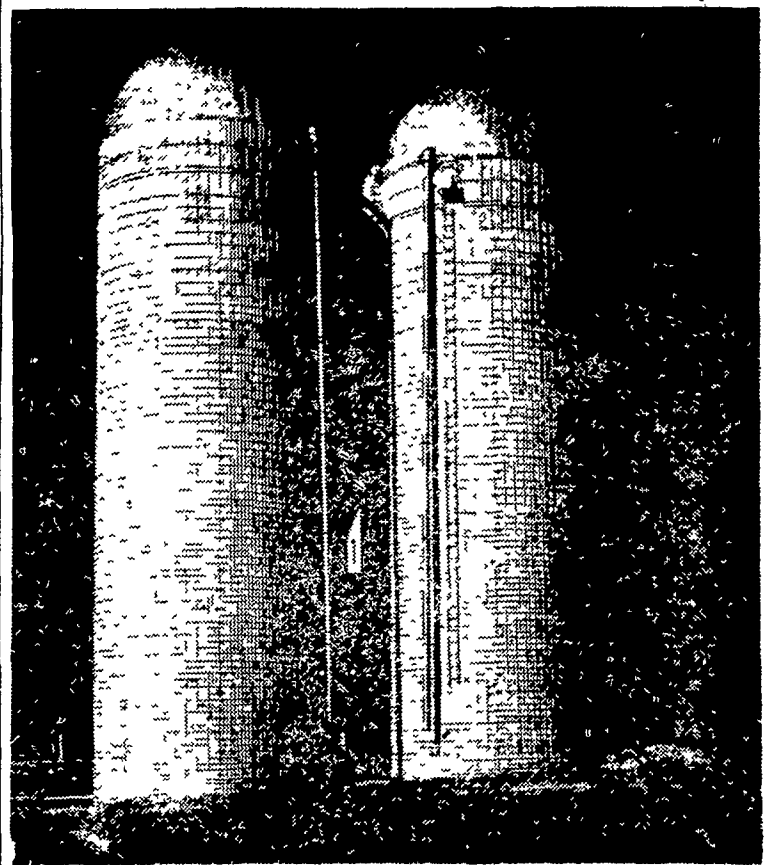
Bulk Metered Service
Equipment Engineering and Installation
Rental Equipment

Box 1197, Dillerville Road Lancaster, Pa.
Phone 397-4954

For Information and Service Call "Doug"

LANCASTER SILOS ... VIBRATED & CORRUGATED STAVE SILOS

Designed and Built For Strength



GET YOUR EARLY ORDER DISCOUNT NOW

Contact
Leroy Zook, Salesman
C. B. HOOBER & SON
Intercourse
717-768-8231 or 215-593-5793

Also See Us For Starline Silo Unloaders

Manufactured in Leola by

LANCASTER SILO COMPANY

2436 Creek Hill Road, Lancaster, Pa. 17601

NOW!

IS THE TIME TO PURCHASE YOUR

REMINGTON CHAIN SAW

THERE IS A DIFFERENCE

SATISFACTION GUARANTEED



Remington



Remington Arms Company, Inc., Park Forest, Ill.

FOR A LARGE SELECTION OF NEW & USED CHAIN SAWS ... SEE

GEHMAN BROS.

SALES & SERVICE

Phone 445 6272
1 Mi N of Terre Hill on Rt. 897
East Earl R D. 1



Any youngster will thrill to this one --

THE JOHN DEERE Riding Tractor

A real, authentic John Deere Riding Tractor with pedals for fun-filled action. Made of long-lasting aluminum alloy; has heavy, rubber-tired, ballbearing wheels and strong roller chain drive. Handsomely finished in tough baked enamel in yellow and green. The tractor and trailer are made for each other with secure draw bar hitch. May be purchased individually or in combination. Come in and see this riding tractor. You'll find more than the usual in stability and quality. Great for a Christmas present or any special occasion.

Wenger Implement, Inc. Landis Bros. Inc.
The Buck 284-4141 Lancaster 393-3906

A. B. C. Groff, Inc. Sholtzberger's
New Holland 354-4191 Elm 665-2141

M. S. Yearsley & Sons
West Chester 696-2990