

# Lancaster Farming

## SECOND SECTION



A PROMISING Black Angus steer was awarded to Clark Stauffer, (right), son of Mr. and Mrs. Aaron Stauffer, Ephrata R1, recently by the Ephrata Area Jaycee's as part of their Youth Development Program. Representing the Jaycee Organization Monday afternoon for this Lancaster Farming Photo is John Weaver, Lititz R4, Chairman of the Steer Committee.

### Ephrata Jaycee Steer Awarded To Stauffer

Clark Stauffer, son of Mr & Mrs Aaron Stauffer, Ephrata, R1, was named winner of the seventh annual Ephrata Area Jaycee Steer Award. Clark is an eleventh grade agriculture student at Ephrata High School and

reporter for the Cloister FFA chapter.

The steer, a 400 lb. Black Angus was purchased from Locust Lane Farms, Hershey, R1. The steer will be shown at next year's Ephrata Fair and the Pennsylvania Livestock Exposition at Harrisburg. Local Jaycee chairman for the steer award was John Weaver with Gary Stafford & Ken Zimmerman as committee members.

### Project To Aid Students From Limited Backgrounds

The College of Agriculture at The Pennsylvania State University is developing a program for students whose chances are limited for entering college through regular procedures.

Started this Fall with eight students, the program aids persons who would otherwise have great difficulty in entering college because of prior environmental limitations, says William L. Henson, faculty member who coordinates the project. Most of these students come from families with low incomes. Intellectual growth may have been stunted by inadequate schools, subnormal and often chaotic home life, and a community with no inducement to work for self-improvement.

The program does not lower college standards for entry or graduation. Modified criteria, however, are used to evaluate the academic potential of the students. The students enroll in regular courses of study and are

expected to meet all University requirements to complete their college education.

Each student takes part in a work-study program and receives about \$150 per term for departmental work. Cash grants range from \$215 to \$350 per person per term depending upon need. Informal tutoring is available from volunteers among the faculty, staff, and students. The Ag Student Council has 25 volunteer tutors ready to lend a hand.

Efforts to locate eligible persons were concentrated in the small towns and rural areas. Of-

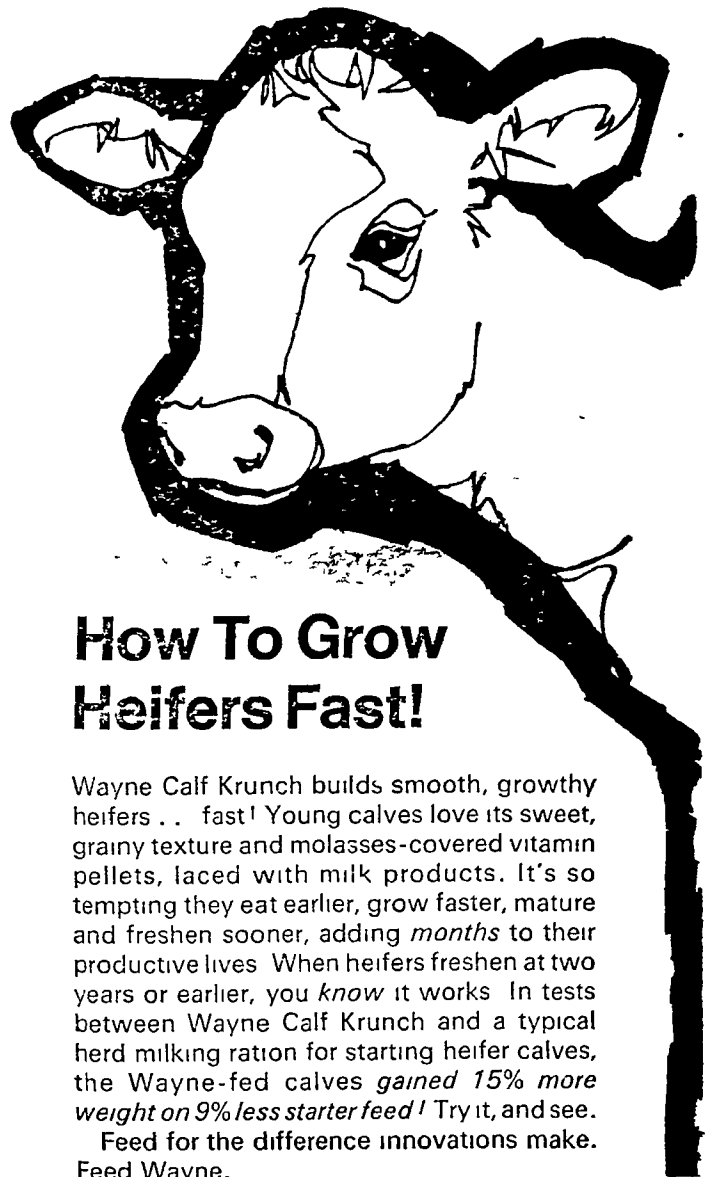
ficials of rural high schools throughout Pennsylvania were contacted and selected students were interviewed. Financial need was a necessary qualification but not the only one. Efforts at self-help during high school such as after school employment, were major factors in selecting certain individuals.

Dr. Henson and associates sought young persons wanting to take scientific courses of study. Above average high school academic performance, combined with average scores on standardized college entrance examinations were other considerations used in selecting the first eight enrollees. At least four additional students will be admitted during the next three academic years.

The award was made on a competitive basis of a written application, detailing how the steer should be raised, a budget for raising the steer, plus an interview with the Jaycee selection committee.

Previous winners include: Richard Ritter, 1963; Ed Redcay, 1964; William Buchter, 1965; Jay Smoker, 1966; Eugene Bollinger, 1967; Tom Bollinger, 1968.

The Jaycee Steer Award is part of the Ephrata Area Jaycee's Youth Development Program.



### How To Grow Heifers Fast!

Wayne Calf Krunch builds smooth, growthy heifers . . . fast! Young calves love its sweet, grainy texture and molasses-covered vitamin pellets, laced with milk products. It's so tempting they eat earlier, grow faster, mature and freshen sooner, adding months to their productive lives. When heifers freshen at two years or earlier, you know it works. In tests between Wayne Calf Krunch and a typical herd milking ration for starting heifer calves, the Wayne-fed calves gained 15% more weight on 9% less starter feed! Try it, and see.

Feed for the difference innovations make. Feed Wayne.

WAYNE CALF KRUNCH



From Allied Mills The Innovators

PARADISE SUPPLY Paradise

H. JACOB HOOPER Intercourse, Pa

H. M. STAUFFER & SONS, INC. Witmer

HERSHEY BROS. Reinholds

C. E. SAUDER & SONS R. D. 1, East Earl

GRUBB SUPPLY CO Elizabethtown

DUTCHMAN FEED MILLS, INC. R. D. 1, Stevens

WHITE OAK MILL R. D. 4 Manheim

HEISEY FARM SERVICE Lawn — Ph 964-3444

POWL'S FEED SERVICE R. D. 1, Quarryville R. D. 2, Peach Bottom

MOUNTVILLE FEED SERVICE R. D. 2, Columbia

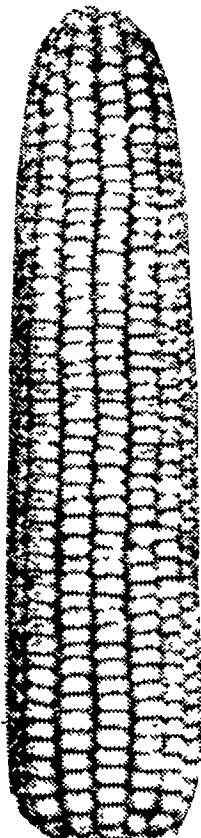
ROHRER'S MILL R. D. 1, Ronks

## SPECIAL NOTICE

Early Discount Extended Until January 1, 1970

To help in your year end planning & seed ordering.

NOW IS THE TIME



## TO ORDER - TO SELL MUNCY CHIEF 200 BUSHEL HYBRIDS

50c Bu. Early Order Discount ON RETAIL SLIPS SENT IN BEFORE JANUARY 1, 1970

ORDER DIRECT OR FROM MUNCY-CHIEF DEALERS

MUNCY-CHIEF HYBRIDS MUNCY, PENNSYLVANIA 17756

Please send catalog price list

Name

Address

Farmer  Dealer  Student  Teacher

Check here if interested in becoming a dealer for Muncy-Chief Seeds

Acres Farmed . . . . . Acres to Corn . . . . .