

● **Outstanding**
(Continued from Page 1)

since the fall shows, they will eventually succeed"

Andy says he admires the man who builds a top herd and can say he never bought a cow. But this dairyman likes to add two or three good cows to his herd each year if possible. "I think the average person's life is too short to breed everything good in his herd. You still can use your own breeding program even if you buy an occasional good cow. In fact, I would rather milk the dam of my herd sire," he said.

And he is milking the Excellent, 92 point, N-Del Cee Lodestar Duchess cow that has 22,421 pounds of milk and 804 pounds of butterfat as a five-year-old in 352 days and is the dam of the Caernarvan herd sire, N-Del-Cee Dutchman who is also excellent and was nominated All-American as a two-year-old in 1968 and now has seven up-standing, milky daughters in the herd.

Another cow in the herd classified Excellent 92 is the well known show cow Rhoda Edgefield Ivanhoe with a string of show winnings. A pair of Ivanhoe daughters are contract bred for a national breeding establishment and two Caernarvan bulls are now in artificial breeding studs.

These are only a few of the many fine cows that were seen by visitors from twenty states,

four countries and a near by college during the past year.

A new barn is now under construction for the herd that will feature 78 tie stalls, rubber mats for each cow, a pipe-line milker, tile milk house, farm office and a liquid manure handling system. The goal for this new addition is to have an efficient, attractive place for the production and sale of Registered Holsteins.

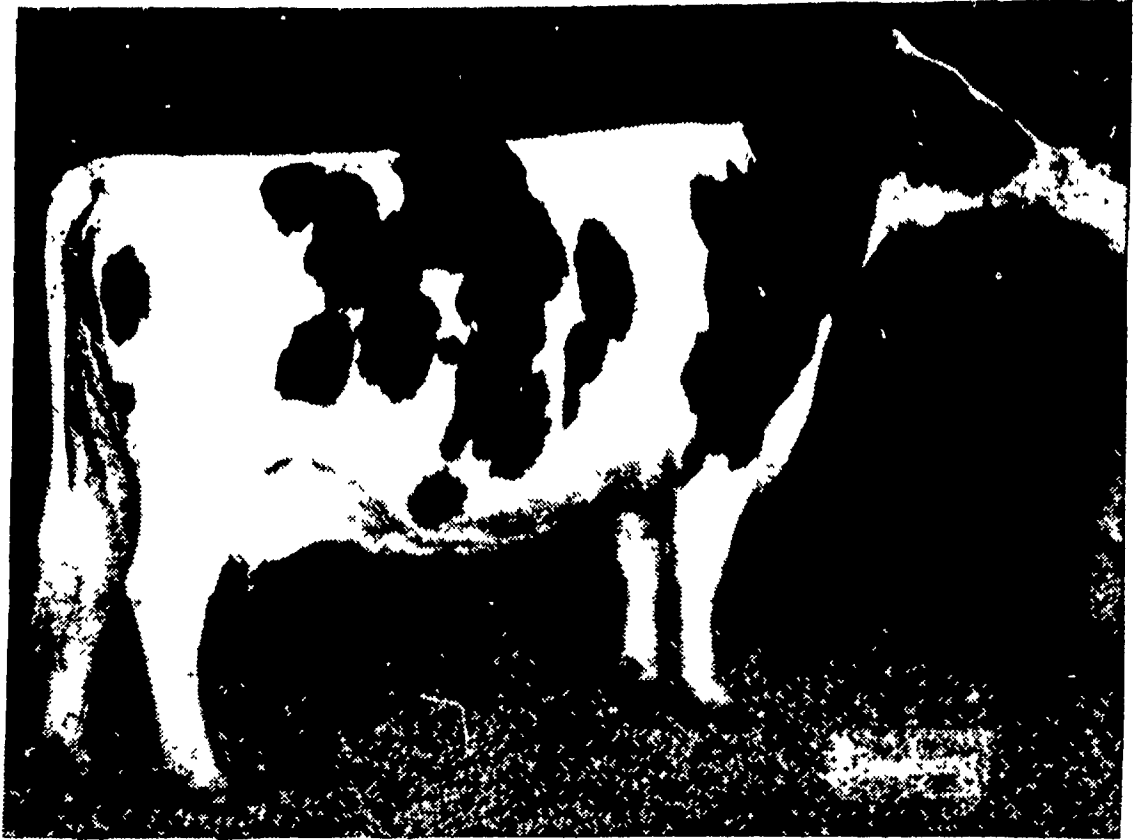
Conservation Program

A conservation farm plan has been developed in cooperation with the Berks County Soil Conservation District. All fields are tested annually and lime and fertilizer are applied accordingly.

Andy has established cut-back borders for wildlife and has removed 2 miles of fence rows. He installed 3,600 feet of cropland terraces, installed 1,300 feet of open waterways and rearranged the patterns of his strips for maximum conservation and workability.

Of special note and one that Stoltzfus thinks more farmers should practice is complete records on fertilizer, lime, and manure that is applied on each field in his 216 acre operation; the crop variety that is planted; when and what pesticides are applied; and the final yield the field produces.

To keep himself motivated to do a better job with his cropland, Andy participates in both the Garden Spot Young Farmer and



N-DEL-CEE LODESTAR DUCHESS, classified Excellent at 92 points, is a favorite cow in the Caernarvan herd with a top

record of 5-7y 352d 22,421m 804f and is the dam of the Dutchman herd sire.

the Twin Valley Young Farmer Silage and Corn contests. "If someone is doing a good job and getting high crop yields, I'm the first to want to know how he does it," Stoltzfus said. "We continue to learn all the time," he continued. "And I think probably the most important management practice a man can have is to keep an open mind and learn from those who are doing a good job. It's when you stop learning because of a closed mind that you fall along the way."

Preventative Maintenance

Each piece of farm machinery in this young farmer's operation is treated with care. Machines are air cleaned, serviced and inspected during the winter months to insure minimum breakdowns in the harvest season. Andy inventories spare parts and a well-equipped farm shop is maintained for welding, painting and carpentry work. And this

work proves necessary and invaluable in Andy's situation where mechanical devices are used to replace manual labor whenever possible.

Farm Records

Probably one of the main enterprises that holds this vast family farm together is the office system that includes finger-tip filing developed by Mrs. Stoltzfus. Not only are files kept on the essential data of the dairy herd; but also a full system of headings that include all farm operations and individual interests.

In addition, the farm business has been put on Agway's computerized record system and the Penn State Linear Program System is used. With a complete set of good records to feed into the computers, the Stoltzfus family can be guided in future management decisions as well as be informed of the present situation on their farm.

If Andy Stoltzfus' interest in

farming and dairying is exceeded by anything, it could only be by his work on behalf of his fellow dairyman. This has taken the form of working with the Garden Spot Young Farmer Program and the Twin Valley Young Farmer Program (he helped start the organization) and his work as a director of Inter-State Milk Producers Cooperative.

"Everybody doesn't drink milk," he says. "So, we must promote it." And the best way to do this is to vote for the state authorized program now up for approval by dairymen, Stoltzfus thinks. "The percentage deducted is fair and it will include everyone," he said. "And the state is the only one who can collect it and they will only be allowed to receive up to five percent of the assessment for administrative costs. That is reasonable."

Stoltzfus was named Pennsylv. (Continued on Page 7)



NOMINATED ALL-AMERICAN TWO-YEAR-OLD in 1968 is Andy Stoltzfus' herd sire, N-Del-Cee Dutchman. Dutchman is now classified Excellent and has seven up-standing, milky daughters in the Caernarvan herd.

L. F. Photo

\$\$\$ SAVE \$\$\$

- Savings of up to **\$10.94 per ton** by top dressing alfalfa and plowing down corn fertilizer now!
- **Alfalfa-chickweed control** can be added for further savings.
- **Corn** — ask about our profit-designed plowdown ratios.

SAVE TIME AND MONEY!
CALL US NOW FOR DETAILS!



FERTILIZER CO., INC.

East Petersburg

Ph: 569-3296

TOP QUALITY FEED

Florin Dairy FEEDS

Pay off in greater milk productivity and bigger milk checks!

WOLGEMUTH BROS., INC.

RELIABLE FLORIN FEEDS

Mt. Joy Ph. 653-1451