

## Read Lancaster Farming For Full Market Reports

**CHECK WITH FARM CREDIT  
FIRST FOR A**

# FARM MORTGAGE

Farm Credit Mortgage Loans are tailored to the farmer's needs. Payments scheduled to coincide with income. Early pay-off without penalty. Transferable in event of sale.

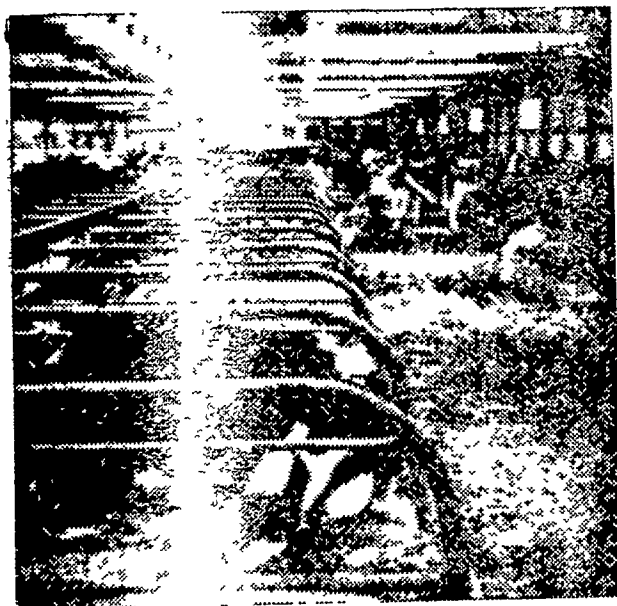
LONG TERM LAND BANK MORTGAGE LOANS  
SHORT TERM PRODUCTION CREDIT LOANS

## Farm Credit ASSOCIATIONS

411 W. Roseville Rd., Lancaster  
Ph. 393-3921  
Agway Building, Lebanon  
Ph. 273-4506



## FREY FREE STALL Lifetime Free Stall Housing



Cut bedding costs 75%, reduce labor for barn cleaning and cow washing, reduce teat and udder injury to the minimum — house your milking herd in free stall housing. Each cow provided a stall for loafing. She won't be stepping on the rear curb forces manure out into alley for mechanical cleaning or washing. A few minutes twice a day cleans the stalls and curbs, bedding lasts almost forever if your stalls fit the cows. Popular sizes are 6'6", 7' and 7'6". Size 'em by breed.

Our free stall partition may be mounted on wooden head boards or we make a steel divider. Set the legs in 8 to 10" concrete curbs to hold and retain bedding. Stall floor can be soil, sand or gravel. Bedding — straw, sawdust, peanut hulls, ground corn cobs, etc. Should be installed with paved alley surface 8 feet wide for mechanical cleaning or washing.

- 8 Models all steel welded farm and feedlot gates
- 2 Models all steel welded head catch gate

For prices, contact: Fred Frey, Mgr.  
786-2235 (717)

### FREY BROS.

R. D. #2  
Quarryville, Penna. 17566

### • Hays

(Continued from Page 13)

strong udders; have a strong constitution, but not the barrel-bellied type; and have strong tops. There is a 100 percent calf crop for a cow to stay in the herd. We have never trimmed a foot nor milked a cow, and only two cows have lost a quarter in the past seven years," Hays said.

"We don't care about color, width between the eyes, depth of flank or tail settings," says Senator Hays. "We haven't found a packer who would pay for things like this."

Other outstanding highlights of the day's events included a barbecue feast. Almost 700 pounds of Hays Converter 14-pound standing rib roasts were consumed for lunch. The truth is in the eating, but Hays Converter carcasses were also on display.

Lavon Sumption, Animal Science Section, Research Station, Canadian Department of Agriculture, and Lloyd Schmitt, Owner-Manager, Performance Indexing Center, Stanford, Montana, were the guest speakers for the event. Both paid special tribute to Senator Hays for his foresight in developing the breed and to ABS for seeking the exclusive marketing rights for distribution of semen.

A highlight of the event was

### Salesman Joins Staff

The Kinzer Equipment Co., Kinzers, announced this week, the addition of George Sheppard to their staff as salesman. Sheppard has an extensive background in the farm and construction equipment field. His experience includes nine years with the J. I. Case Company as District Manager and Credit Manager for a branch house.

He has also worked for a Case construction dealer in the Philadelphia area.

Mr. and Mrs. Sheppard reside at Morgantown and have two children in college.

Keeping cool in an emergency is always easier when it's happening to someone else.

the selection of two groups of five bulls each for testing at the Performance Indexing Center, Stanford, Montana, and the Bassano Test Station, Bassano, Alberta, Canada. These selections were conducted by Lloyd Schmitt, owner-manager of the Hays Converter Stanford operation, and official

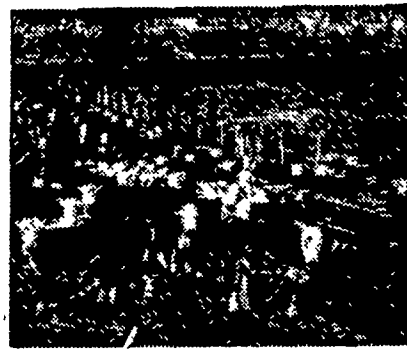
Calf No.	Birth Date	Stanford			Dam
		Days Of Age	Actual Weight	Adjusted 205-d Wt.	
156	May 3, 1969	173	535	703	2-Year-Old
105	April 16, 1969	190	622	755	2-Year-Old
8	April 29, 1969	177	555	715	2-Year-Old
219	April 27, 1969	179	570	698	3-Year-Old
277	May 3, 1969	173	640	745	Cow

Bassano					
26	April 12, 1969	194	550	577	Cow
205	April 22, 1969	185	615	675	Cow
218	May 12, 1969	164	500	606	Cow
213	May 8, 1969	168	419	592	Cow
209	April 24, 1969	182	535	571	Cow

Since March of this year, the Hays Ranch has hosted visitors from 18 different countries.

## No Other Protein Need When You Feed



# SPECIAL TANVILAC

Feeders Say . . .  
"The Most Economical  
Feeding Plan of All"

No trouble with scours or cattle going off feed. You'll be more than satisfied with our feeding program for you'll get healthy stock, quick gains at low cost. Remember, there's a FEED LOT PROVEN TANVILAC CULTURE PRODUCT FOR EVERY FARM-FEEDING PURPOSE.

USE ONLY 1/2 LB. SPECIAL TANVILAC PER HEAD PER DAY WITH GRAIN AND ROUGHAGE — GET BIGGER PROFITS

FOR MORE PROFITS—MAIL COUPON  
THE TANVILAC COMPANY, INC.  
6th & Corning Ave., Box 96, Highland  
Park Station, Des Moines 13, Iowa  
• Please Send Me Additional Information about Special Tanvilac.

I have \_\_\_\_\_ Cattle  
NAME \_\_\_\_\_  
ADDRESS \_\_\_\_\_



## C. O. NOLT

LOCAL DISTRIBUTOR

BIRD-IN-HAND

Phone Lanc. 397-0751

## Announcing: a dry "pop-up" Can cut planting time in half!



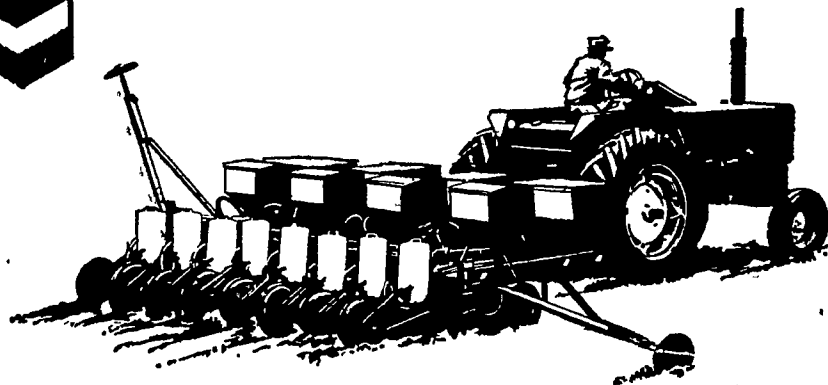
### Ortho Unipel STARTER SPECIAL.

A starter? As a "pop-up"? It has to be special. It is STARTER SPECIAL is a completely unique product. Here's why — Physical Uniformity. STARTER SPECIAL pellets are made to the same shape and density for maximum consistency and control in application. — Chemical Uniformity. Each and every STARTER SPECIAL pellet has all three primary nutrients — nitrogen, phosphorus, potassium — chemically homogenized in precisely the most desirable ratio: 13-34-10. The nutrients can't separate or segregate during handling as with troublesome, hard-to-regulate "dry blends." — Double Duty Nutrients. STARTER SPECIAL has both quick-acting and long-lasting nitrogen and phosphorus for thorough plant feeding. There is no urea or diammonium phosphate that might endanger the seed through liberation of free ammonia.

Of course, these features also make it highly effective as a banded starter. But, with only slight adaptation of most planters, it can be applied directly with the seed in exacting measurement for safety and maximum response.

With this kind of control, you apply much less material — only 1/3 the amount needed for banding. And the reduced material handling could cut your planting time in half!

So, save time, trouble, and money at planting time. See us soon about applying STARTER SPECIAL this spring as a dry "pop-up".



— Distributed By —

## P. L. ROHRER & BRO., INC.

Smoketown, Pa.

Ph. Lanc. 397-3539

TM's Ortho, Chevron Design Unipel Reg. U.S. Pat. Off.