



ABOUT 1800 SHOATS have come into Lancaster County in recent weeks from Wisconsin through the Agway feeder pig program — the most recent shipment a 600 head lot arriving last Friday. In the Lancaster Farming Photo above, Richard Myer, Salesman for Henry B. Hoover Inc. in Ephrata, checks 150 of the new arrivals on the farm of Lloyd M. Sensenig, Ephrata R1. Mr. and Mrs. Sensenig live along Route 322 just outside Northern Ephrata with their three children, Bruce 4, Brenda 3 and Jay Lloyd 1½. Corn, steers and swine are their main enterprises. The 45 pound crossbred feeder pigs are purchased for local farmers from the Wisconsin Feeder Pig Cooperative and

**Meeting Minutes**

**Pa. Egg Marketing Association**

President Ben Burkholder presiding, called for the presentation of the treasurers' report which was given by the secretary in the absence of the treasurer. The report was accepted as presented.

Hermit Bath reported that the Farm Show Committee had in mind dressing up the egg show this year. Presently the idea is to use a large number of hard cooked eggs. Sam Berenson and Earl Hess offered one case each and Ivin Musser is to furnish the balance and prorate the cost to the members.

John Wenger indicated that some members had raised a question about a \$60 dues level. Some thought it should be \$50 but the Association is ever in need of funds. Following a rather thorough discussion the group voted to leave the dues level at \$60 for 1970.

President Ben Burkholder offered the names of Robert

brought here on a special trailer that is used by the Wisconsin Co-op. only to transport shoats.

Other farmers receiving part of the latest shipment were Clyde Wivell, Columbia, and Henry Kettering and Lloyd Nolt, both of Lititz.

Shelly, Allen Shade, and Raymond Saudei as directors to represent PEMA on the Federation Board when the Association has fulfilled its financial obligation to the Federation. The members accepted the nominations for 3, 2, and one year in the order named.

There was a rather lengthy discussion about the Northeast promotion program using a flip chart which was prepared in New York State and shown to the group at the October meeting. All of those who saw the presentation were satisfied that the flip chart had great possibilities.

The members suggested that PEMA write to Honorable L. H. Bull, Secretary of Agriculture, and urge him to find money to fund the preparation of the flip chart. The president will advise the Secretary that every member will cooperate by using the material when it is available.

Sam Berenson talking on price erosion indicated that eggs are available but their price and the cost of preparing them for the merchandiser exceeds that of some competitors. "People in the industry must be broad minded in their thinking" "They must consider the industry as a whole . . . rather than assume a selfish attitude. Many people who were in the egg business at one time and never eroded price are the ones who should still be in the business. It appears quite often that industry people are disinterested in what is happening when in fact everyone should think clearly and work together to benefit all".

It was announced that the next and all subsequent meetings will be held at Schrafft's Restaurant, Denver, Pa.

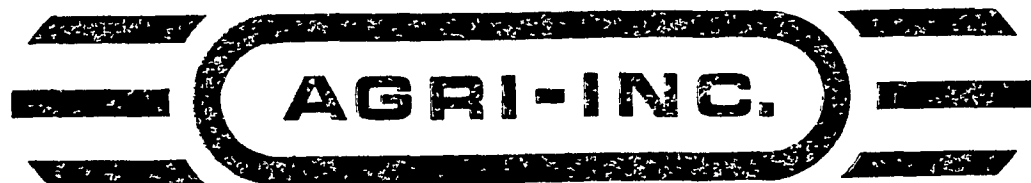
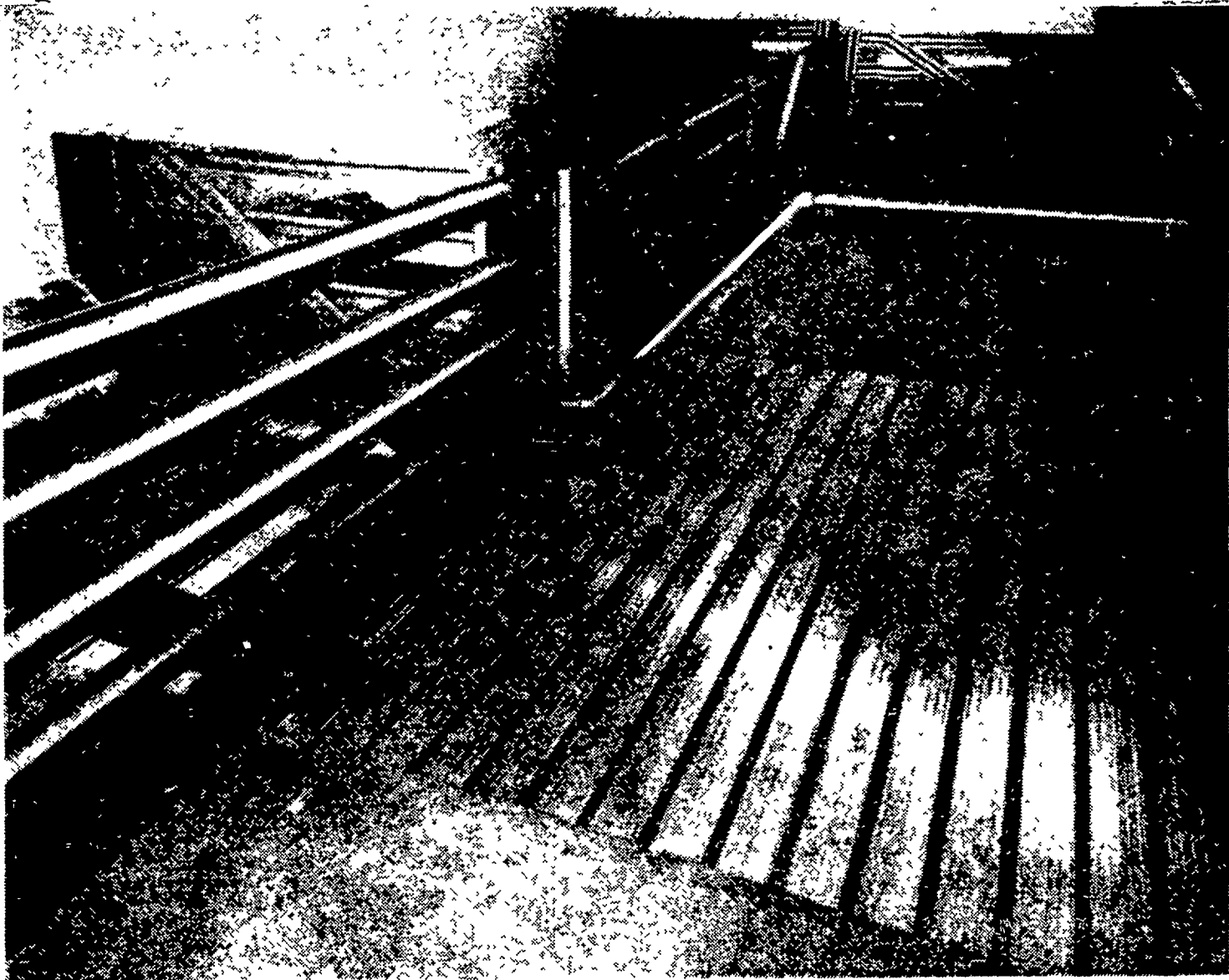
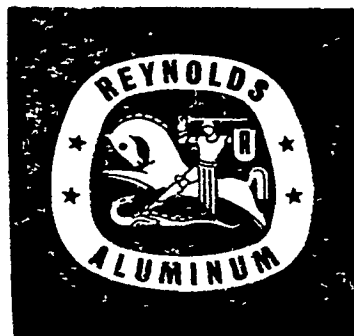
Meeting adjourned at approximately 10:45 p.m.

Do it now. It will give you more time the rest of the day to correct it.

**REYNOLDS ALUMINUM**

**RHINO FLOOR SYSTEMS**

Cut Corrosion From Hog Confinement Structures . . . Year After Unyielding Year

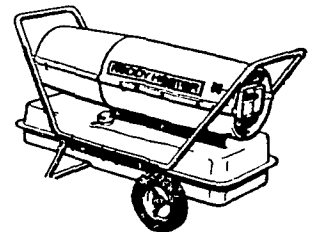


DESIGNERS & BUILDERS OF SYSTEMS

Ephrata R. 2 (Farmersville) Pa. 17522

Phone 717-354-5374

Plug it in and forget it . . .



**This high-capacity Reddy Heater has an automatic safety shut-off control**

Exclusive control gives you peace of mind. Stops heater automatically if flame or ignition fail. Makes it ideal for building tradesmen, farmers, warehouses — any application where heater must run unattended overnight. Big 85,000 BTU capacity. Runs up to 145 hours on tankful of low-cost kerosene. Hauls easily in a car. Ask for demonstration.

AS LOW AS  
**\$99.95**

**REDDY HEATER**

**GEHMAN BROS.**

SALES & SERVICE  
1 Mile North of Terre Hill on Route 897  
East Earl R D 1, Penna  
Phone 215-445-6272