

Local 4-H Group Tops At Expo

(Continued from Page 1)

over winning six of the first eight places and sending 12 year-old Gehman's entry on to the breed championship and the County Club entry went on to the top

Gehman, showing his first steer named "Butch", was grand champion at the Ephrata Fair, before going to the top at the exposition

Other countians placing high in their classes by Breed included

Angus — Sharon Weaver, New Holland R1, second, Shuley L. Craig, Nottingham R2, fourth, and Gary Dean, Strasburg R1, fifth, junior yearling

Marvin L Nissley, Mount Joy R1, third; Lancaster County 4H Baby Beef Club, sixth, and Donnie Dowart, Quarryville R2, 10th summer yearling

Gregory C. Greider, Columbia R2, third; Sharon Weaver, fourth; Sheryl D. Weaver, New Holland R1, sixth, senior calf

Hereford — Ray A. Brubaker, 206 Rohrerstown Road, third; Sheryl Weaver, fourth and Roland Longenecker, Lititz R2, fifth, junior yearling

John M. Enck, Holtwood R1, third; Lancaster County 4H Baby Beef Club, fifth, Dennis S. Brubaker, 345 Running Pump

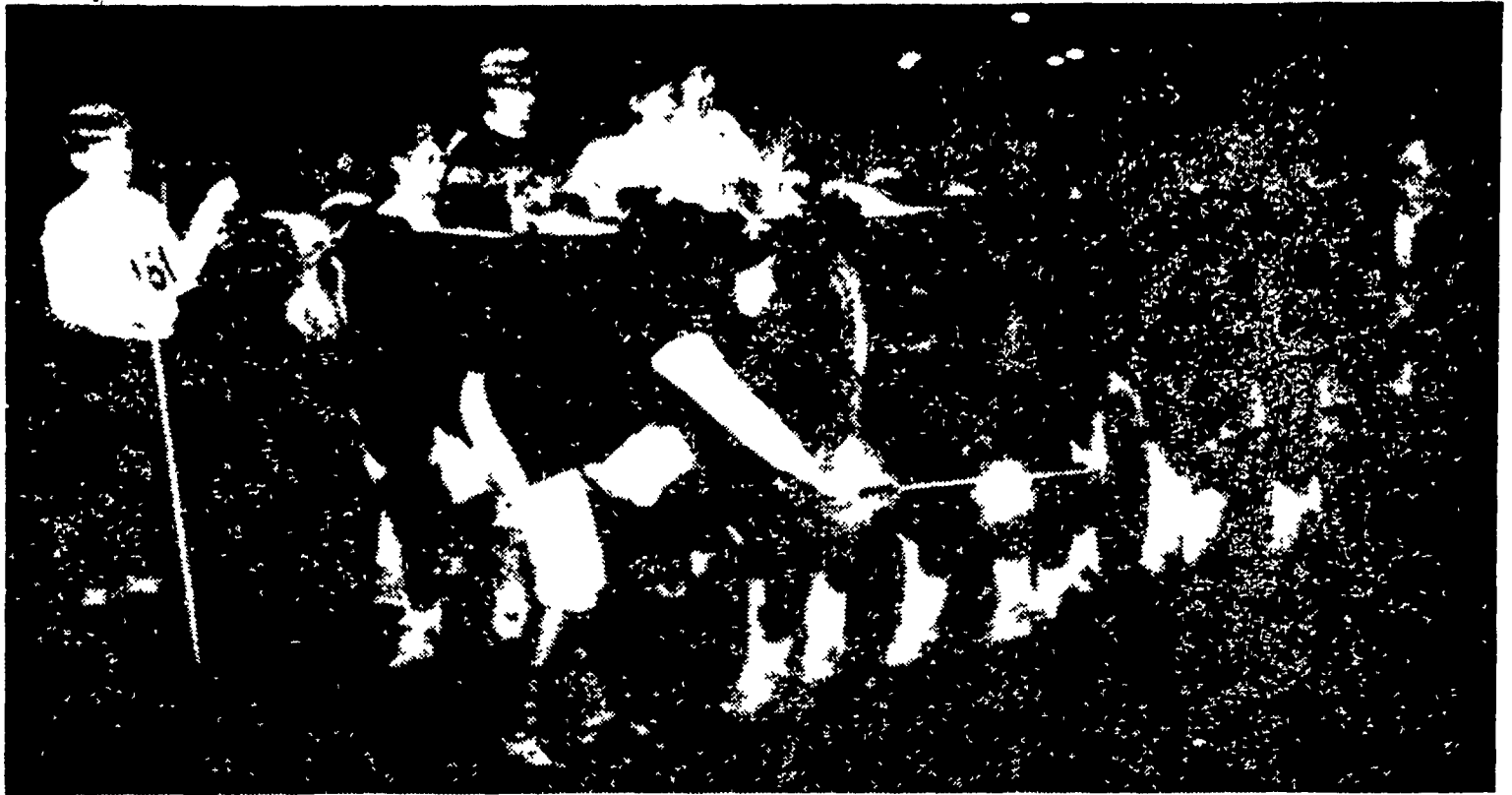
Robert K. Rohrer

**Bulldozing - Grading
Patz Sales & Service**

Barn Cleaners - Silo
Unloaders - Cattle Feeders

Quarryville, R. D. 1

Hensel 548-2559



THE JUDGE IS LOOKING. The boys are (left to right) Steven Gehman, Mike Ober, Dennis Brubaker,

John Enck, and Marvin Nissley Their helpers are Sheryl Weaver (left) and Donna Hess. L. F. Photo

Road, sixth; and Marvin Nissley, seventh, summer yearling.

David Enck, Holtwood R1, second; and Cheryl Brubaker, ninth, senior calf.

Shorthorn — Kenneth Longenecker, Lititz R2, second, junior yearling.

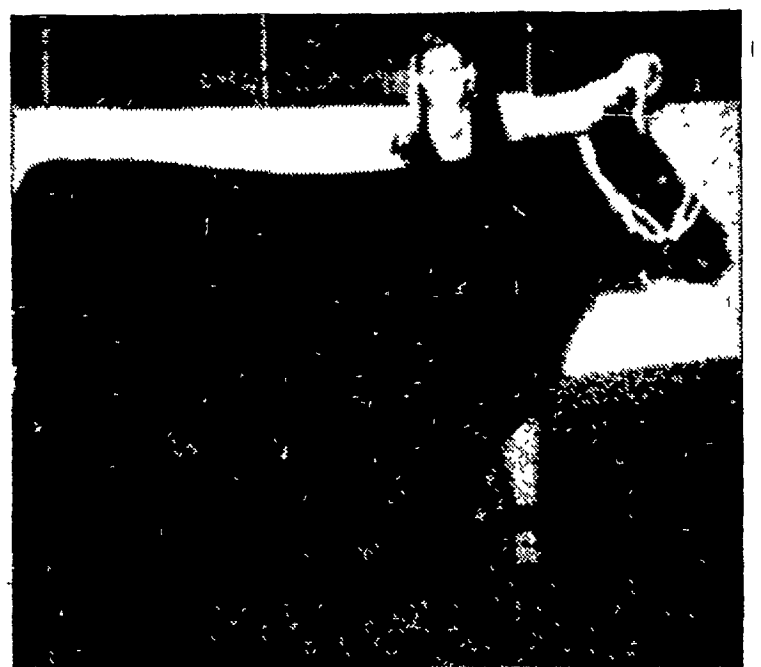
Linford D Martin, East Earl R1, sixth, Elaine L Herr, 840 Penn Grant Road, seventh, John D. Martin, Pequea R1, ninth, and Nancy Zimmerman, Ephrata R1, 10th, summer yearling

Nancy J Herr, 840 Penn Grant Road, second, Donna Hess, Strasburg R1, third, Barry Longenecker, fifth, and Donna Hess, sixth, senior calf



KAREN HIGH had a good day at the Junior Livestock Exposition Monday, by winning the Shorthorn breed championship (above) and the Angus reserve breed championship (right)

L F Photo



Standability-Profitability

You get both in these

HOT LINE HYBRIDS

For Lancaster County



G-4697 . . . G-4595 . . . G-4644
G-5757 . . . G-4411

A. H. HOFFMAN SEEDS, INC.

Landisville, Pa.

898-2261



U. of D. Gets USDA Poultry Research Grant

The Agricultural Experiment Station at the University of Delaware has been awarded a two-year, \$12,000 contract by the U.S. Department of Agriculture to study the control of Marek's disease in chickens

Dr. William C. Kiauss, associate professor of animal science at the University, will be in charge of the research project according to Dr. William J. Benton, chairman of the de-

partment of animal science and agricultural biochemistry

Marek's disease is a highly contagious ailment that is responsible for condemnation losses to the poultry industry, estimated at \$200 million each year. The disease, caused by a virus, kills or cripples young growing broilers. Broilers with lesions cannot be used for human consumption even though the disease is not transmitted to man.

Certain drugs and hormones affecting the immune mechanism may alter the course of the

disease so that broilers will reach the processing age with less mortality and a lower rate of condemnation, Kiauss says.

His research will involve first of all, finding out the sequence of events in Marek's disease from the time the virus enters the chicken until it causes crippling or death. Once this is known, the effect of drugs and hormones on the cycle can be readily determined and the weak link in the chain recognized, Kiauss explains.