

SPECIAL MENTION

COMPLETE HERD DISPERSAL

at the New Holland Sales Stables, Inc.

WEDNESDAY, NOV. 19, 1969

37 HEAD
HOLSTEIN
COWS



12 fresh, 6 close springers, balance all stages of lactation. 1 cow milking 100 lbs. per day. 7 fancy open Heifers ready to breed.

This is a young herd, all home raised. Selling only due to farm being sold. Any farmer looking for quality and milk, plan to attend this sale.

GLENN FITE, owner
Ph: 1 717-786-2750

Public Auction

Of Trucks, Trailers, and
Construction Equipment

SATURDAY, NOV. 22, 1969

10 O'clock A. M.

Located on Route 419 north of Schaefferstown — east
of Lebanon off Route 501

TRUCKS

1964 - Mack F 700 — V8 — full screw — 15 speed transmission; 1963 - International — DC0405 — 220 Cummings 2 speed, 5-speed transmission — sleeper cab — sliding 5th wheel; 1962 - International — DCO405 — 220 Cummings 2 speed, 5 speed transmission, sleeper cab, sliding 5th wheel, 50,000 new motor; 1961 - Mack — H Model, tag axle, sleeper cab; 1960 - G.M.C. — Detroit diesel 238 — Road Ranger Trans, tag axle, sleeper cab, 1960 - H Model — Mack; 1958 - 220 International Truck Tractor (Parts), 1952 - G.M.C. New Motor (parts truck), 1957 - Buick wagon; 1960 - Ford dump truck Y tag; 1956 - Reo dump truck W tag; 1954 - Reo dump truck W tag; 1948 - Dodge dump truck motor completely overhauled; 1948 - Dodge truck with Insorgal Ram Compressor mounted; 1953 - Ford pick up truck, utility body; and 1950 - Ford flatbed dump 12 ft.

35 ft. Trailco-trailer - spread axle - flat; 35 ft. - Fruehauf trailer - spread axle - flat; 35 ft. - Steco - spread axle - flat; and 29 ft. - Larross - 25 ton low boy trailer tandem axle.

CONSTRUCTION EQUIPMENT

H D5 - Allis Chalmers Crawler with loader & ripper; H D6 - Allis Chalmers Crawler with loader (parts for H D6 also); John Deere 440 diesel crawler - loader and ripper; Case 800 Crawler Dozer; International T D6 Dozer, (T D6 parts also); 1963 - Case 530 backhoe and loader; Ford 1800 Backhoe & Loader; Ford Jubilee Backhoe & Loader, 1964 - Massey Ferguson 65 with loader 7 side mounted mower, Farmall A tractor with cultivator; John Deere 110 lawn tractor with mower; Clark fork lift; Inersol Ram 105 air compressor mounted on trailer; Hobart 200 AMP portable welder with cables, Steam Jenny, Salt spreader for dump truck; Motors - 5th wheels, saddle tanks, oil drums, 637 Timken rear, house trailer axils, tires, rims, & miscellaneous parts, chains, chain binders, hydraulic jacks, tarps, compressor tools, drills, points, tampers, chisels, braker hose, etc. & other articles too numerous to mention

Auctioneer's Note — This equipment is all in very good condition and maintenance has been conducted regularly. All trucks & trailers will carry current inspection, except parts trucks

TERMS: CASH

by

KLEINFELTER BROS.

R. D. 2

Myerstown, Pa.

Blaine N. Rentzel — Auctioneer
Box 222, Emigsville, Pa.
Ph. 717-764-6412

Refreshment Rights Reserved

● Have You Heard?

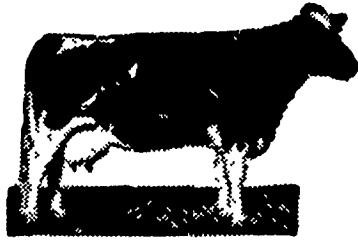
(Continued from Page 31)

Moderate 325 to 375 degrees F.

Hot or Quick 375 to 425 degrees F.

Very Hot 425 to 500 degrees F.

PUBLIC DAIRY



COW SALE

THURSDAY NIGHT, NOV. 20

Starting 8:00 p.m. Sharp

SALE LOCATED 5 MILES NORTH OF RT. 222
ALONG 897, 2 MILES NORTH OF REINHOLDS.

50 HEAD OF CATTLE

This includes a top herd of Bradford County cows with records up to 18,000 lbs. The right kind for replacements. All certified and accredited. Will also have a load of top Susquehanna County cows and a good young stock bull. Look around for cattle, but before you buy — see us!

Health Charts Night of Sale

Randal Kline — Auctioneer

Vernon and Ray Kline — Owners

PHONE Area Code 215 267-2368 or 267-2298

Not Responsible For Accidents
Refreshment Stand

Public Sale

of Farm Machinery and
Household Goods

1½ Miles South of Conestoga, Off Shenk Ferry Road, 10
Miles Southwest of Lancaster using Route 324.

SATURDAY, NOV. 22, 1969

10:30 A. M.

Super M D Farmall with 3 Pt. Hitch,

Cockshut 35 Tractor with Cults.,

M. H. No. 80 Special 10 ft. Combine,

M. H. Self Propelled Cornpicker,

IHC Equipment as follows No 10 - 16 Disc Grain Drill (good), 531 - 3 Pt Plow, 3 Bottom, 241 Cornplanter and a Fast Hitch Cornplanter, No 100 Fast Hitch Mower, No 2 Hay Conditioner, No 16 Harvester (like new), No 40 Spreader, No 15 Side Delivery Rake, Disc Harrows, N.H. 77 Baler, Case Forage Blower, Case Heavy Duty Cut-away Disc Harrow, Spring Harrow, J D Side Delivery Rake 3 Pt, J D. Crimper, Brillion Cultipacker, Case Cornpicker, John Deere P T O 1 Row Potato Digger, 2 Row Potato Digger, Bemis 2 Row Tobacco Planter

1961 B 160 I.H.C. TRUCK, 16 FT. STAKE BODY,

CATTLE RACKS, 30,000 Miles (Good)

1953 STUDEBAKER PICKUP WITH RACKS

2 Forage Wagons with False Endgates, Unloading Unit, 2 Smoker Elevators, Grain Bin on Wagon, Coin Drag, 2 Tobacco Wagons, N.H. Cornsheller, No 4A Bear Cat Hammermill, 2 Ton Feed Mixer P T O, 12 ft Grain Auger, 8,000 Tobacco Lath, 2 Bale Boxes, 60 ft Endless Belt, Mounted Wood Saw, Platform Scales Bag Wagon, Grain Cleaner, Hog Feeders, Troughs, Hand Coin sheller, Straw Cutter, Log Chains

4 Electric Brooders, Fence Posts, Tobacco Chippers, Cow Clippers, Milk Cans, Buckets, Tools, Shovels, Forks and other articles not mentioned. The above equipment has been very well cared for

HOUSEHOLD GOODS

3 Piece Living Room Suite, 10 Piece Dining Room Suite, Piano, 2 Wardrobes, Sewing Machine, Large Chest Freezer, 6 Cane Seated Chairs, 2 Rockers, 4 Kitchen Chairs, Utility Cabinet Floor Lamps, Table Lamps, Tables, Speed Queen Washer, Twin Laundry Tubs, 2 Meat Benches, Meat Grinder, Shoe Lathe, Egg Grader and Keenco Egg Washer, Egg Baskets, Quilting Frame, 4 qt Pasteurizer, qt and pt Jars, Play Pen, Some Antique Dishes, Punch Bowl with 5 Cups, Wood Potato Masher, Chocolate Set, Some Nippon China, etc

HOUSEHOLD ITEM 10:30 TILL 12. SMALL ITEMS 12 to 1.

Terms by

HENRY SOUDERS

Kreider and Diller, Auctioneers

Lunch By New Danville Fire Co.

Preserve Fall Splendor In Winter Months

You can take a little bit of this fall's splendor with you into the winter months if you preserve some of the colorful leaves so plentiful now

All too often people collect leaves, put them between the pages of a book and forget them, says Dr. Francis R. Gounin, Extension horticulturist at the University of Maryland. Many times these leaves lose their color and turn brown

Dr. Gounin outlines an effective method of preserving leaves for use in dried arrangements and decorations. He calls it a "plant press"

Place the leaves — and small branches — between several sheets of newspaper. Put a stiff sheet of corrugated cardboard over the newspaper. Put more leaves between more newspaper and add another piece of cardboard. Continue building this sandwich type of plant press with paper and cardboard until you have a stack eight or ten inches high

When you have completed this stack, put a board across the stack and add several heavy objects such as stones, books or a concrete block

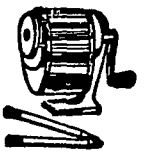
Leave the plant press in a cool dry room for two or three weeks

"If the leaves are succulent (juicy), you may have to change the newspapers every two or three days," Dr. Gounin cautions. "However, you should not have to change the papers more than twice"

If you follow these directions carefully, your leaves should keep much of their beauty after snow covers the ground

Correspondence

Courses



Retirement — A Personal Experience

Retirement — A Personal Experience is the title of a new course from the Correspondence Course office of The Pennsylvania State University. It discusses you as an individual in retirement

The purpose of the course is to guide you in preparing yourself for a happy retirement. Topics included are relationships with others, characteristics of older people, you as grandparents, where you live in retirement, changing living space, and senior citizen communities

To get a copy of the course send \$2.65 to Retirement, Box 5000 University Park, Pennsylvania 16802. Make check or money order payable to Penn State.

Eight cases of animal rabies were diagnosed in the state from July 1 through Sept 30, the Pennsylvania Department of Agriculture has announced

Rabid animals and county of origin were: bat, Bucks, dog, skunk, Clarion, skunk, Clearfield, two bats, Delaware, skunk, Fayette, bat, York

One bat was diagnosed as rabid during the same period last year

A wind with a speed of 74 miles per hour or more is designated a hurricane

Basketball is the only major sport of strictly American origin.