



PRESIDENTS OF INTER-STATE LOCALS elected Monday night at the annual meeting are (left to right) Monroe W. Good, New Holland Local; Lester G. Lan-

dis, Witmer Local; Charles H. Rohrer, Paradise Local and Roy Benner, Christiana Local. L. F. Photo

Inter-State
(Continued from Page 1)

said. "We lost 10 points on Class I utilization in the last three years, and that wiped out any net gain we received in higher Class I prices."

The Class I price is for bottled milk, Class II price is for milk used in manufacturing and the blend price is the combination of the two prices in relationship to the percentage of each Class used in a given market.

To gain back the lost points in blend prices, Inter-State is proposing a change in the base plan from the present July to December base making period to an August to December base making period. They are also asking for reimbursement for co-operatives from the pool or marketing order for services performed that benefit the entire market.

Speaking of the recent joining of the Maryland-Virginia, Maryland and Inter-State Co-operatives, Hand said the three organizations are remaining individuals but are combining efforts in situations where they are in competition with each other or where combined resources is needed against outside competition. "We have seen a steady decline in milk dealers buying milk and as plants close larger plants serving a wide area emerge. Producers must get together under such a situation," Hand said. "You can't have several farm groups bidding against each other in the same market."

County Agent M. M. Smith, told the dairymen that forage testing of silage and hay does not cost, it pays, and cautioned farmers to control parasites in their cattle. "If you are raising livestock in this area, you probably have some parasites," he said. They can cut production up to 20 percent.

Boyd Gaitley, Director of Public Relations, gave a presentation on milk promotion and Walter Clau Martin told of his experiences as a 1969 young cooperator.

In the election of officers, the following results were reported:

New Holland Local: Monroe

Chopin's Inspiration

Because of political troubles in Poland, the great composer Chopin left for Paris. On his way, news reached him of the capture of Warsaw by the Russians and this event inspired his "Study in C Minor."

W. Good, President; Melvin N. Herr, Secretary-Treasurer; Walter C. Martin and Chester M. Weaver, Jr., Delegates; Monroe W. Good and Ervin H. Nolt, Alternate Delegates; John B. Ranck, Jr., L & N Route Committeeman and Melvin S. Groff, Ewell Route Committeeman.

Paradise Local, Charles H. Rohrer, President; Ivan Bowman, Jr., Secretary-Treasurer, Roy Book and C Nevin Hershey, Delegates; Roy C. Neff and Melvin R. Stoltzfus, Alternate Delegates and J. Arthur Rohrer, L & N Route Alternate Committeemen.

Christiana Local, Roy Benner, President; Marvin Hershey, Secretary-Treasurer; Melvin J. Martin and Glenn G. Miller, Delegates; Charles Groff and Nathan Stoltzfus, Alternate Delegates; Jacob Kreider, Lancaster Market Committeeman and Melvin Hershey, Samuel Martin, Jr. and Kenneth Skiles, Harris Route Committeemen.

Witmer Local, Lester Landis, President; John Landis, Secretary-Treasurer; Mervin Landis, Delegate; Frank Hershey, Lancaster Market Committeeman and J. Donald Myer, Welk Route Alternate Committeeman.



FARMILL CONSTRUCTION

R. 1, Gordonville, Pa. Phone 717-768-8796

Standability-Profitability

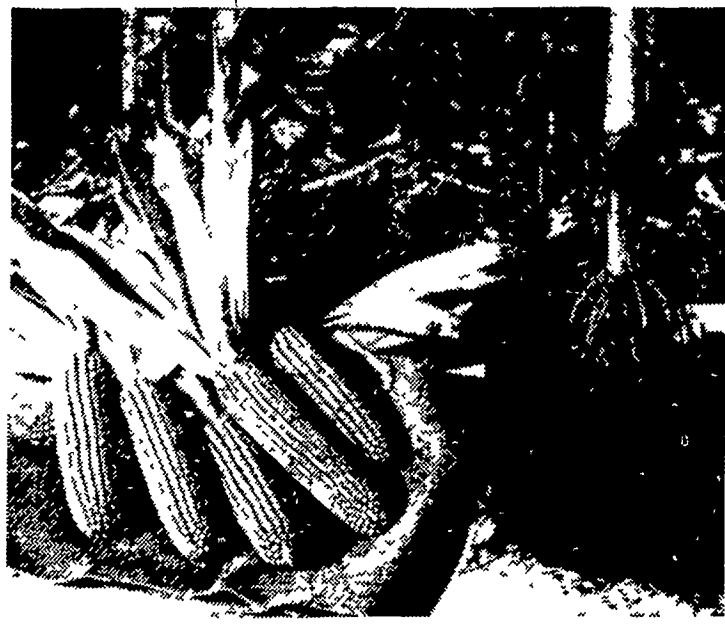
You get both in these
HOT LINE HYBRIDS
For Lancaster County



G-4697 . . . G-4595 . . . G-4644 . . . G-5757

A. H. HOFFMAN SEEDS, INC.

Landisville, Pa. 898-2261



Read Lancaster Farming For Full Market Reports

I went to the Key Bank for my farm loan.

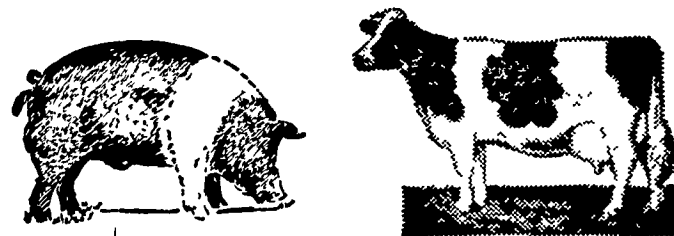
There's a real farmer's banker there—Stanley Musselman. He knows farming as well as I do. He gave me some good advice on planning for profitable management—even had some ideas on how I could improve my operation. That's the kind of banking service that suits me fine.



LANCASTER COUNTY FARMERS NATIONAL
LANCASTER • QUARRYVILLE • MOUNT JEB • CHRISTIANA • COLUMBIA
MEMBER F.D.I.C.

IT PAYS TO "RITCHIE-LINE" YOUR FARM

THRIFTY RITCHIE AUTOMATIC LIVESTOCK WATERERS



73 Waterers in 27 Models For Every Farm Need INSURES water warmed in winter and pipe-line cool in summer. Use in Lot or in a Fenceline.

'Round the Clock They Make Money For You! Come In Today

LESTER A. SINGER

RONKS, PA. 687-6712

Princep turns weedy alfalfa into alfalfa again.



Spraying Princep™ 80W on dormant alfalfa this fall, can give you better quality, high-yielding alfalfa next year.

It can lengthen the life of your alfalfa stand, and make your hay worth more. If you've got a weedy alfalfa stand at least a year old, spray Princep and you'll cut cleaner hay next year.

P. L. ROHRER & BRO., INC.

Smoketown, Pa. Phone 397-3539