

Local
(Continued from Page 1)

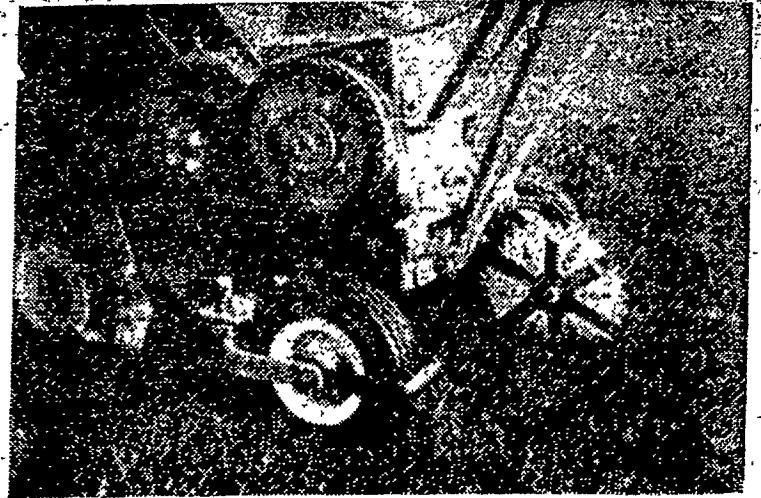


ROBERT HUMMER and his sister Mrs. Nancy Waltz, check the current potato crop being harvested. Beside their 55 acres of potatoes they have 35 acres seeded to lawn turf on their Manheim R1 home place. L. F. Photo

with the best end product — a product that can be labeled "Certified Turf Grass." "This gives the consumer the assurance he is getting what he pays for," Hummer said.

To harvest the turf, Bob uses a small garden tractor type cutting machine that cuts strips of turf about one-half inch thick, 15 inches wide and five feet long. On a large order these strips are folded in half and laid on pallets and the pallets of grass are mechanically lifted on the truck for shipment. For a small order like Bob had Tuesday afternoon the pieces are rolled and placed by hand on a farm truck.

Hummer admits that a small slice of top soil is taken off each time a crop of turf is harvested but it doesn't worry him, and he plans to reseed the ground just harvested to turf grass again. "Top soil is so easy to replace," he said. Construction sites like the Park City development have huge amounts of extra top soil they don't know what to do with. We'll just have top soil trucked here and leveled off with a bulldozer. With the small amount of



A TURF CUTTING MACHINE.

soil that is removed, a good field still really will not need top soil replaced more than every five years. But on the knobs we plan to fill some even this first year of harvest before we reseed again," Bob said.

What kind of prospects does the turf business have for Hummer in the future? "I think the market outlet for pre-grown lawn sod is as good as the nation's economy," Bob said. "As long as

people have leisure time and companies are expanding, construction, there will be a need for this product."

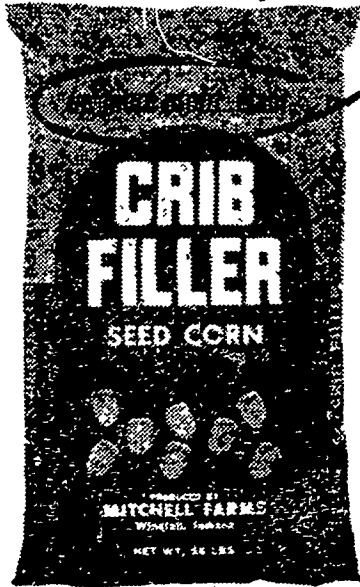
The Hummer's also raise 55 acres of potatoes and were busy this week digging and grading the spuds. They reported yields of over 70 bushels per acre and the size to be larger than last year.

Their turf and potato farm is located just south of Sporting Hill.

CRIB FILLER

1970

*Memo to Mr. Producer:
This is important.*



Real Winners — Silage or Grain
C/F 105 — C/F 66 — C/F 40 — C/F 123

For complete details on the profit potential from Crib Filler

See your local Crib Filler dealer below:

FARMERS SUPPLY CO.
Lancaster

ZIMMERMAN'S ANIMAL
HEALTH SUPPLIES
R D., Lititz

MUSSER'S MILL
The Buck

F. M. BROWN'S SONS, INC.
Sinking Spring

LANCASTER BONE FERT.
CO.
Quarryville

BOMBERGER'S STORE
Elm

KIRKWOOD
FEED & GRAIN
Kirkwood

GEHMAN FEED MILL
Denver

ANDERSON
FEED & GRAIN
R D., Oxford

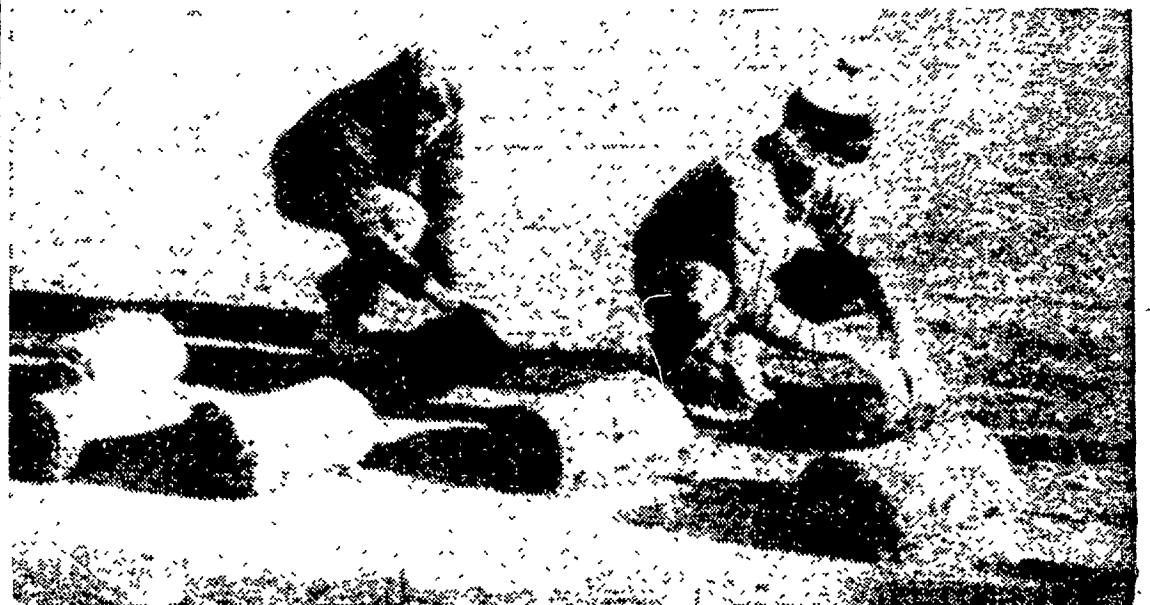
MARTIN FEED MILL
Ephrata

WEAVER FIX-IT SHOP
R D., New Holland

H. H. GOOD MILL
Fivepointville

E. H. KEEN & SON
Atglen

DISTRIBUTED BY
STANFORD SEED COMPANY
Plymouth Meeting, Pa. 19462

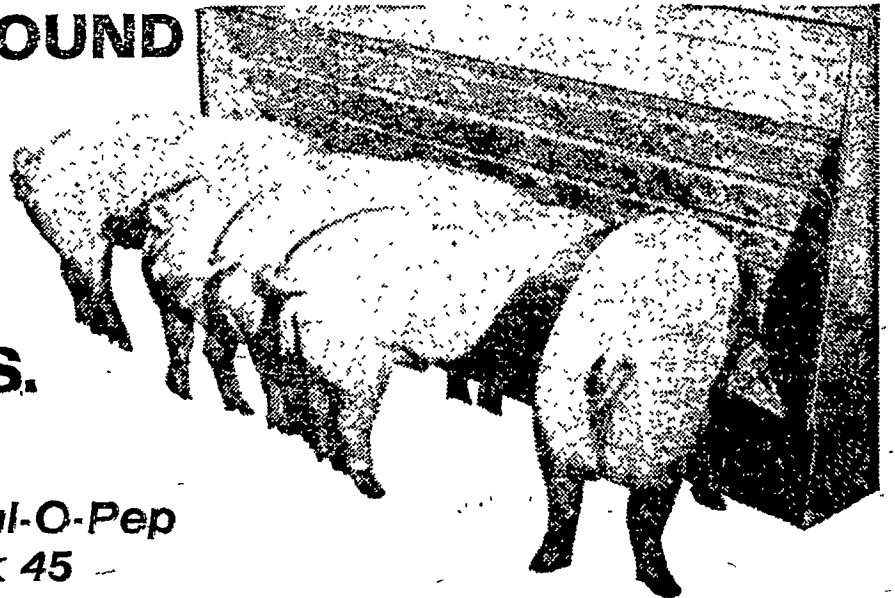


ROLLING STRIPS OF TURF GRASS, are Glenn Nolt (left) and Steve Snavely. The turf has been cut into five foot strips

and will be loaded for shipment.

L. F. Photo

ONE POUND OF PORK ON ONLY 2.9 LBS. FEED



...with Ful-O-Pep
Gro-Pork 45

Talk about fast gains . . . on less feed per pound of pork! Let us tell you how hogs fed Ful-O-Pep Gro-Pork 45 and ground corn—10 weeks to market—can produce a lb. of gain on only 2.9 lbs. feed.

Extra feeding efficiency—extra pork from each ton of feed—can make a big difference in your

net returns. Get the extra efficiency of Ful-O-Pep Gro-Pork 45—for top feed conversion at low cost.

Come in. Check the record on Ful-O-Pep Gro-Pork 45. It could be the most profitable 10 minutes you've spent this year! And we'll be happy to visit with you.

Stevens Feed Mill, Inc.
Leola

S. H. Hiestand & Company
Salunga

Harold H. Good
Terre Hill

Stevens Feed Mill, Inc.
Stevens