

Weekly Poultry Report

Fogelsville

October 21, 1969

HENS, Heavy Type 9½-17 mostly 12-15; PULLETS 18-37 mostly 27-31; ROASTERS 8-36 mostly 27½-31; CAPONS 43-49; DUCKS 29½-35; DRAKES 30½-40; RABBITS 10-38 mostly 27-32; GUINEAS 54-59½; PIGEONS (Per Pair) 1.02½-2.15 mostly 1.02½-1.35.

TOTAL COOPS SOLD 686

Delmarva

Ready-to-cook movement good however occasionally slightly less aggressive, especially for week end loads. Less-than-trucklot prices generally unchanged for current shipment. Advance business slow in developing though limited trading reported at unchanged levels with this

week. Live supplies ample and still heavier than desired at many points. Undertone unsettled.

Pool trucklot (Thursday arrival at terminal markets): U.S. Grade A 29½-31 mostly 30-30½c; Plant Grade 29-30 mostly 29½-30c. Special packs including 1¼-2, 3½# sizes 32-33½c.

Eastern Pennsylvania And New Jersey

Live Hen Market

Prices of light type hens unchanged though trending lower within the range more frequently. Demand fair but less aggressive as most processors have ample supplies to keep operating at near capacity. Slaughter increased. Offerings of heavy type hens noted short of a fair demand. Prices paid at farm: Light Type Hens: 8-11½ mostly 11c; Heavy Type Hens: Tfewr.

● **Chicago**

(Continued from Page 2)

to Low Prime weighing 825-1050 lbs.

SLAUGHTER STEERS — On Monday two loads Prime 1343 lbs. Yield Grade 3 and 4 30.75. On Wednesday, small supply Prime 1200-1350 lbs., 30.25-30.50. Mixed, High Choice and Prime 1000 lbs. Yield Grade 2 to 4 1125-1300 lbs. 29.50-30.25. Choice 26.50-27.50. Mixed Good and 950-1300 lbs. Yield Grade 2 to 4

● **Lancaster**

(Continued from Page 2)

BULLS — Choice 28.00-29.50 Good 26.00-28.00; Utility and Commercial 25.50-28.75; few head 28.75-29.50.

FEEDER STEERS — Load Choice 550 lbs. 32.00; couple loads Choice and Prime 950-1000 lbs. 29.00-29.25; load mixed-Good and Choice 745 lbs. 28.00; three loads Standard and Good 940 lbs. Holsteins 25.75.

CALVES-500 — Vealers steady to 1.00 lower.

VEALERS—Choice 47.00-51.00 Good 44.00-48.00; Standard 39.50-45.50; Utility 34.00-39.50; Cull 90-120 lbs. 30.00-34.50; 65-85 lbs. 25.00-30.00.

HOGS 1050 — Barrows and Gilts steady to 25 lower; Sows scarce.

CLOSING SALES BARROWS AND GILTS—US 2-3 200-260 lbs. 26.50-26.85. 14 head US 1-2 215-240 lbs. 27.50-28.00.

SHEEP 350 — Woolled Lambs fully steady; Ewes steady.

WOOLED LAMBS — Choice 60-90 lbs. 28.00-30.00; Good 26.00-28.50.

SLAUGHTER EWES—Utility and Good 5.50-10.00

28.00-29.50. Mixed Good and Choice 27.50-28.25.

SLAUGHTER HEIFERS—On Wednesday, High Choice and Prime 900-1050 lbs. Yield Grade 3 and 4 27.50-28.00. Choice 825-Mixed, High Choice and Prime 1000 lbs. Yield Grade 2 to 4 1125-1300 lbs. 29.50-30.25. Choice 26.50-27.50. Mixed Good and 950-1300 lbs. Yield Grade 2 to 4 Choice 26.00-26.50.

Lancaster Farming, Saturday, October 25, 1969—3

Weekly New York Egg Mkt.

(From Monday, October 20th to Friday, October 24th)

	Mon.	Tues.	Wed.	Thurs.	Fri.
WHITE					
Fcy. Ex. Large	47-48	47½-48½	47½-48½	48½-49½	49-50
Fcy. Large	46	46½	46½	47	48
Fcy. Mediums	42½-43	42½-43	43	43	43
Fcy. Pullets	36	36	36	36	36-37
Fcy. Peewees	26	26	26	26	26-27
BROWN					
Fcy. Large	45-46	45-46	45-46	47½	46-47
Fcy. Pullets	34-35	34-35	35-36	35-36	36-37
Fcy. Peewees	26	26	26	26	26-27
Standard	43½	43½	43½	44	44½
Checks	34	34	34-35	35	35

Trend: Market showing fully firm position on Large white. Balance in good demand.

Copyright 1969 by Urner Barry Publications

● **Hunters**

(Continued from Page 2)

other domestic meat, if the hunter requests it. Plants are not permitted, however, to sell these products."

Secretary Bull said the only restriction affecting game requires meat plants to process game animals separately from domestic livestock.

"We appreciate the convenience and services that many meat plants offer hunters," Secretary Bull added. "It is one of the services that help make hunting such a popular sport in Pennsylvania. It also helps avoid the waste of good meat where they could have their that could occur if hunters had game dressed."

● **Auction**

(Continued from Page 2)

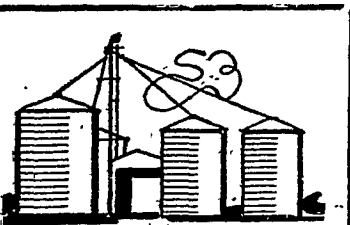
CALVES 174 — Vealers steady to 1.00 lower.

VEALERS — Choice 48.00-50.50; Good 44.00-48.50; Standard 39.50-45.50. Utility 34.00-39.50; Cull 90-120 lbs. 30.00-34.50. 65-85 lbs. 25.00-30.00.

HOGS 217 — Barrows and Gilts mostly steady.

BARROWS AND GILTS—US 2-3 200-260 lbs. 26.50-26.85. 14 head US 1-2 215-240 lbs. 27.50-28.00.

SHEEP 10 — No market test.



FARMILL CONSTRUCTION

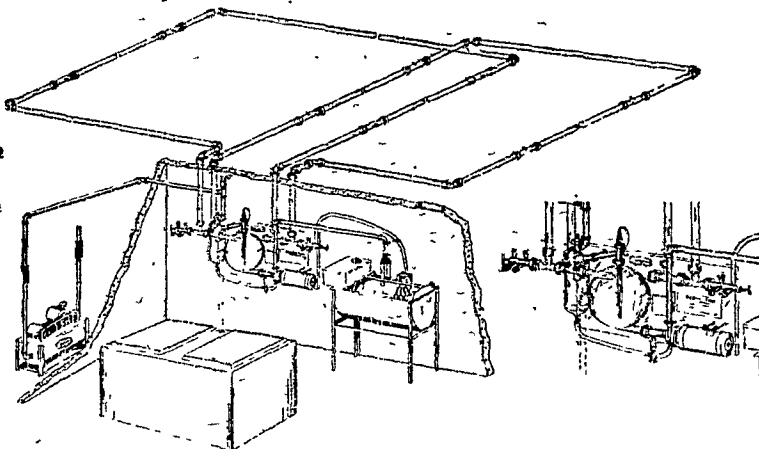
R-1, Gordonville, Pa.
Phone 717-768-8796

Perfection Can Put A Pipeline In Any Barn

WHY BUY A PIPELINE?

For An Average 40 Cow Herd You Can . . .

1. Save walking 100 miles a year.
2. Save carrying 292 tons of milk a year.
3. Save 200 hours per year on an average herd.
4. Produce higher quality milk.
5. Increase your milk production.



WHY BUY A PERFECTION PIPELINE?

1. Engineered for the modern dairy farm of today as well as the dairy farm of tomorrow. Around the barn pipelines and milking parlors.
2. The only milkhouse control unit that is assembled at our modern new factory on a stainless steel panel. Pretested for trouble free operation, self-draining with patented washing features.
3. Built and guaranteed by Perfection Milker-Division of Sta-Rite Industries, Inc., of Delavan, Wisconsin, a recognized leader in home water systems and agricultural components.

- 24 Hour Milking
 - Installation and Service
- Equipment Service

CALL TODAY AND ASK FOR AN APPOINTMENT

Agway Bee Line's Local Commodity Technician is:

MR. FRED KERLIN



BEE-LINE SUPPLY CENTER

1027 Dillerville Road, Lancaster
24 Hour Service Daily — Ph: 717-397-4761

CUSTOM SPRAYING

For Whitewashing

— Spray the modern way —
Use CARBOLA Spray

Carbola dries white, disinfects, kills flies, up to 90% less cobwebs. No wet floors.

MAYNARD L. BEITZEL

Witmer, Pa.

392-7227

MASTER MIX DAIRY CONCENTRATES

TAKES LESS

PRODUCES MORE



Maintains Top Milk Production Longer . . .
At Lower Cost!

START TODAY! Take advantage of our Booking Program for MASTER MIX DAIRY CONCENTRATES. With a Booking of 5 Tons or more, we are offering a pair of rugged all-weather Boots.



Call us for information:
October 29 — Sensenig's Master Mix Dairy Feeder Meeting.

LEROY M. SENSENIG, INC.

Ephrata R. D. 3
Hinkletown

Ph: 733-7009