

# Try A Classified Ad It Pays!

## LAST WINCHESTER FEEDER CATTLE SALE

Farmers Livestock Exchange, Inc. Winchester, Virginia  
State Sponsored — Graded — Uniform Lots — All Breeds

Mark this date on your calendar:  
2nd FEEDER CALF SALE — Friday, October 31, 1969  
7:30 P.M.

Dehorned - Yearlings 500 LB - 1000 Lb  
Feeder Calves 300 Lb - 600 Lb

Bang's Vaccinated heifers—eligible for interstate shipment  
Guarantee "No Bred Heifers or Stags" in feeder calves only

I. Fred Stine, Advisor P. T. McIntire, Sale Manager  
Box 440 Winchester, Va 22601

Write or Phone

NORTHERN VIRGINIA LIVESTOCK, INC.  
Phone: Area Code 703/662-2946

## HEAD 1500 HEAD

(STATE GRADED)

## VIRGINIA FEEDER CALVES

# THURS., OCT. 30

SEVEN P. M.

## FAUQUIER LIVESTOCK EXCHANGE

INCORPORATED

MARSHALL, VIRGINIA

Sponsored by:  
Marshall Feeder Cattle Assn.

All calves will be vaccinated with Rea-Plex and two doses of Pasteurella Heifers vaccinated with strain 19 for brucellosis and guaranteed open. All calves originate in counties free of brucellosis and tuberculosis.

Tel: 703 364-4861

Kent R. Ferrell Auctioneers John H. O'Neill

# Public Auction

## COMPLETE DISPERSAL SALE OF 200 REGISTERED AND GRADE HOLSTEIN DAIRY CATTLE

The undersigned discontinuing the dairy business will sell the complete herd of Dairy Cattle at Public Auction (under tent) on the premises located on BALDWIN MILL ROAD (Md. Rte No. 165) 1 mile South of UPPER CROSS ROADS (at Md. Rte No. 152 — Fallston Road) 6 miles South of JARRETTSVILLE in the Southwestern section of HARFORD CO, MARYLAND,

100 HEAD, FRIDAY, NOVEMBER 7, 1969  
at 10:30 a.m.

100 HEAD, SATURDAY, NOVEMBER 8, 1969  
at 10:30 a.m.

200 HEAD OF REGISTERED AND GRADE HOLSTEIN DAIRY CATTLE: 80 head fresh in the past 60 days, 40 head close Springers and balance in full flow of lactation This is one of the largest Dairy Operations on the East Coast, having been managed by three generations of the Ehrhardt family Conformation, type and size with good milk production have been the primary prerequisite of this herd's status Selective buying of replacement animals, close culling and good dairy management has contributed greatly to the success of this dairy operation T. B. and Bangs tested within 30 days of out-of-state shipments Complete individual information available on days of the sale.

TERMS — CASH

Not responsible for accidents on day of the sale

EHRHARDT FARMS, INC.  
Baldwin, Maryland

Aberdeen Sales Co., Sales Mgr  
Burdell Preston, Jr., Ringmaster

Lunch available on the grounds.

## 30 Percent (Continued from Page 24)

would be more realistic, since about two fifths of the 15 billion hot dogs consumed annually are made at fat target levels of 34 or 35 percent Less than one percent have fat levels exceeding 36 percent

Frankfurters inspected by the USDA have had fat contents ranging from 15 to 51 percent, although the extremes are very rare Federally inspected cooked sausage generally ranges from 32 1 to 33 1 percent fat

Mrs Virginia Knauer, special assistant to the President for consumer affairs, spoke for the 'White House' during the hearings It was largely her efforts (calling for a 30 percent maximum) and the publicity following her testimony which triggered the flood of consumer comments requesting the 30 percent fat limit

Anyway the consumers won Now that all consumers have heard about this controversy, might there be an opportunity for someone to advertise and sell a frank that has only 25 percent fat?

### Only Three Chains Feed Cattle

Only three major food chains are engaged in feeding cattle The three fed a total of 49,000 head of cattle in 1967, less than 23 percent of the total cattle fed

During World War II about 19 chains were involved in cattle

# PUBLIC SALE OF COMPLETE HOLSTEIN DISPERSAL

2 Miles Northeast of Elizabethtown. Go East From Route 230 at Aunt Sally's Kitchen on Mill Road, on the former Henry Hess Farm. Follow signs.

## MONDAY, OCT. 27, 1969

11:30 A. M.

### 93 HEAD OF REGISTERED & GRADE HOLSTEIN DAIRY CATTLE

42 MILK COWS, ONE HALF REGISTERED,

51 HEIFERS, MAJORITY REGISTERED,

10 HEIFERS DUE NOW TILL CHRISTMAS,

26 - 6 MO. TO 24 MO. OF AGE, 14 - UNDER 6 MO. OF AGE

12 Years of ABC and Curtis Breeding, O S 5 Years Average 13,500 M 500 Fat Calfhood Vaccination Health Chart Sale Day

### SALE HELD UNDER COVER.

Cows in herd have milked up to 100 lbs per day  
Rosetta Reg Skylighter Dau 6 Yr. 305 D 15,260 M 538 F  
5 Yr 305 D 18,499 M 683 F

2 Daughters Selling, 1 by Astronaut, 1 by Lockway Lucifer W

Ivanhoe and 1 Granddaughter by Lucky

Sheryl Reg Sequoia Dau 5 Yr. 305 D 16,524 M 568 F

Sheryl has 3 Daughters Selling — Milk and Honey Due in

November and Twin Daughters by Astronaut

Pat Reg Sequoia Dau 5 Yr 305 D 15,017 M 549 F

Pam Reg Cochran Gen Dau 3 Yr. 305 D 15,978 M 540 F

Queen Gr 4 Yr. 305 D 15,998 M 572 F

Sandy and Cindy from a 2 times 20,000 lbs Dam Sally and 2

Grand Daughters

Selling Lytle Lucifer Everlasting Luck 1531531 Born July 25,

1967 Sire Don Augur Everlasting Design 86 pts His Dam Rose

sold for \$6,100

Grand Sir Don Augur Design Homestead with 43 Daughters A

plus on milk 1708 lbs

Lucks Dam Aggie Della Lucifer

11 Yr 364 Da 24,635 M 973 F

Lifetime Prod 234,382 M 9370 F

Many Cows and 10 Heifers now in service to Luck

Also selling 12 Daughters by Luck

Other Sires represented — Ivanhoe Jack, Smith Holm Lu-

cross, Romandale Dividend Peifermer, Posch Sovereign Ivanhoe,

Athalone Leader, Penn State Star Man, Ivanhoe, Citation Cham-

buc Marshall and others.

2 Suge S P 11 Pumps, 2 - 50 lb Pails with Narrowbore, 3 - 4C

lb Pails, Schiue Dumping Station, Stainless Steel Double Tubs, 2

Carrying Pails, Approximately 175 Tons of Corn Silage on Cover-

ed Pile to be sold in lump

TERMS BY

CLAIR NISSLEY

Executor of the Estate of J. Luke Nissley

Kreider and Diller, Auctioneers

and Sales Managers

Wenger & Byler, Attorneys

LUNCH FURNISHED

## Conservation Corner



"Improved pastures sure hike milk production!"

feeding Because of the meat shortage during the war chains moved into the business to assure themselves a constant meat supply

### Poultry Meat In Sausage

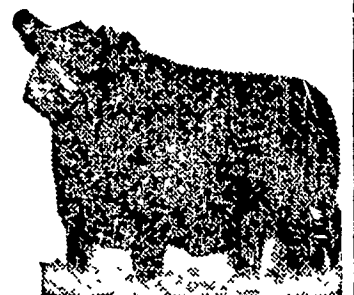
The USDA, after one of the most controversial periods of discussion between proponents and opponents, announced its decision on August 28 regarding the inclusion of poultry in cooked sausage products These include frankfurters, bologna, vienna sausage, knockwurst, and similar products

Poultry meat may now comprise up to 15 percent cooked sausage product, but it must be named in the list of ingredients on the package If the sausage product contains more than 15 percent poultry, the product name must clearly indicate its presence, such as 'Frankfurter with Chicken'

Only poultry (without skin) will be permitted in "all meat" sausages Poultry skin, as a normally edible part of the product, may be used in cooked sausage products that are not labeled as being composed of all meat However, the amount of skin must not be more than the natural proportion that is present on the whole carcass or the part which is used

# CATTLE SALES EVERY TUESDAY

LARGE SELECTIONS OF CATTLE DIRECT FROM PRODUCERS EACH WEEK.



STAUNTON LIVESTOCK MARKET, INC.

C & O Flats Staunton, Va.