

Weekly Poultry Report

Delmarva

Negotiated trucklot prices 23¢ ready-to-cook broiler fivers for delivery next week U S Grade A Tfewr, Plant Grade 29c Pool trucklot (Thursday arrival at terminal markets) U S Grade A 28½-30½ M 28½-29½c Plant Grade 28 29 M 28c Special packs including 1¼-2, 3½ sizes 31-32½c.

Ready-to-cook movement continues active for current delivery Less-than-trucklot prices trended slightly higher within unchanged ranges Limited advance commitments indicated at 29c in New York area Live supplies continue ample and heavy Undertone firm

Eastern Pennsylvania And New Jersey

Prices on light type hens unchanged to 1c lower Demand

continues good Offerings sharply increased with most processing time generally booked full for the next two weeks Heavy type hens limited for a fairly good demand Occasionally bids noted at 15-16c Prices paid at farm Light type hens 8 11½ mostly 11-11¼c Heavy Type Hens Tfewr

Fogelsville

October 14, 1969

(Prices paid dock weights, cents per lb., except where noted)

HENS, Heavy Type 9½-18, PULLETS 26-32, ROASTERS 11-30 mostly 25½-30, DUCKS 11-34 mostly 30-34, DRAKES 7-41 mostly 33-40, RABBITS 15-36 mostly 27-33, GUINEAS 50-60 PIGEONS (Per Pair) 80-205 mostly 100-110.

TOTAL COOPS SOLD 791

Chicago (Continued from Page 2)

cent Slaughter Steers and 27 percent Slaughter Heifers with balance mostly Cows Overall finish Slaughter Steers 16 percent Prime and 75 percent Choice, compared with 14 percent Prime and 75 percent Choice last week and 12 percent Prime and 78 percent Choice last year Average cost of Slaughter Steers estimated at 29.35 compared with 29.62 last week and 28.26 a year ago Average weight estimated at 1160 lbs compared with 1143 lbs last week and 1141 a year ago Heifer supply mostly High Good to Low Prime weighing 825-1050 lbs

SLAUGHTER STEERS — On Wednesday, Prime 1200-1450 lbs Yield Grade 3 and 4 30.75-31.25 with four load string 31.50 Monday High Choice and Prime 1125-1400 lbs 29.75-30.75 Choice 950-1350 lbs Yield Grade 2 to 4 28.50-30.00 Mixed Good and Choice 27.75-28.50

SLAUGHTER HEIFERS — On Wednesday, High Choice and Prime 900-1050 lbs Yield Grade 3 and 4 28.00-28.25, load 1025 lbs 28.35 Choice 825-1000 lbs Yield Grade 2 to 4 27.00-28.00 Mixed Good and Choice 26.25-27.00

Weekly New York Egg Mkt.

(From Monday, October 13th to Friday, October 17th)

	Mon.	Tues.	Wed.	Thurs.	Fri.
WHITE					
Fcy Ex Large	46½-48	46½-48	46½-48	46½-48	47-48
Fcy Large	45½	45½	45½	45½	46
Mediums	43	43	43	43	43
Pullets	36	36	36	36	36
Peewees	26	26	26	26	26
BROWN					
Fcy Large	45-46	45-46	45-46	45-46	45-46
Fcy Pullets	36	36	34-35	34-35	34-35
Fcy Peewees	26	26	26	26	26
Standards	43½	43½	43½	43½	43½
Checks	34	34	34	34	34

Trend Supplies adequate and in good balance for trade needs

Copyright 1969 by Urner Barry Publications

New Holland (Continued from Page 2)

and 6 heifers sold stronger on fresh cows Holstein 425-920, Other breeds 285-390 Bulls 170-250, Heifers 250-395
HORSES
October 13, 1969
Receipts of 316 horses sold steady Riding horses 100-300 Driving horses 110-360 Ponies 10-25, Killies 6½-7½

HOGS
October 13, 1969
Receipts of 938 hogs sold steady

dy Retail 21.75-29.25 Wholesale 27.25-27.75 Heavyweights 25.75-27.25 Sows 21.25-25, Boars 17-19.

CALVES

October 13, 1969
Receipts of 158 calves sold \$1.00 lower on Good and L. Choice and steady on the remainder Choice and Prime 45.50-50; Good and L. Choice 41.50-45; Standard 37.50-41, Common 25-37

A Lancaster Farming Classified Ad Can Help

Need . . .

HAY - STRAW - EAR CORN

Buy Now and Save!

More and more farmers are buying from us for better value and all around satisfaction.

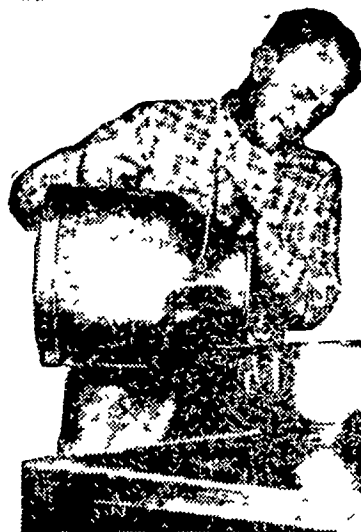
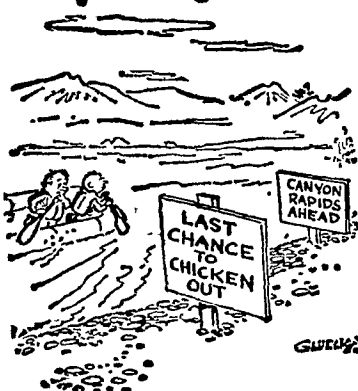
Delivered — any quantity

Phone Area Code 717 687-7631

Esbenshade Turkey Farm

"America's Oldest"
PARADISE, PA.

My Neighbors



MIGHTY MIX FOR MILK

Ful-O-Pep Super Milking 32

More and more profit-minded dairymen are increasing milk production—and milk checks—with Ful-O-Pep Super Milking 32, the mighty mix for milk!

At low cost, too, because you use your own grain, balanced with essential nutrients in Super Milking 32. This popular concentrate contains 32% protein—high-quality, complete proteins. It's power-packed with needed vita-

mins, minerals, molasses . . . all to help you build an efficient ration for heavy, continuous milk flow.

Ask for simple, easy formula. We'll be glad to show you how to make a powerful 16% milk-making feed—with economy—using only about 500 lbs Ful-O-Pep Super Milking 32 per ton. We know you'll be pleased with the results. So drop by as soon as you can.

WE ARE NOW BOOKING

FULO-PEP CATTLE FEEDS

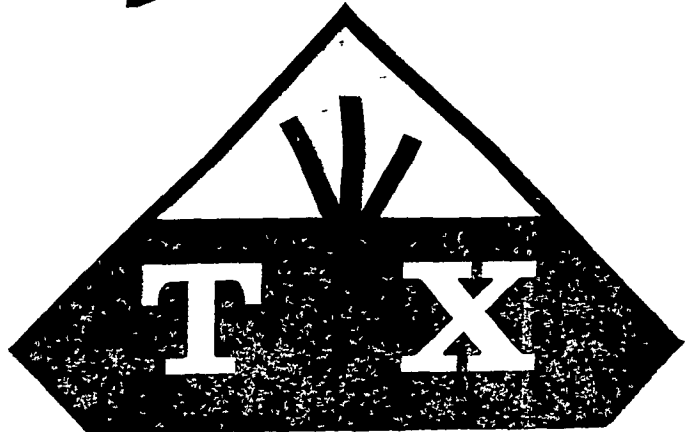
Stevens Feed Mill, Inc.
Leola

S. H. Hiestand & Company
Salunga

Harold H. Good
Terre Hill

Stevens Feed Mill, Inc.
Stevens

TROJAN HYBRIDS



High-Powered Hybrids With "Ripe" Ears On Green Stalks

Test Weight — How would you like corn that makes over 60 lbs per bushel? Our best has hit 65 lbs Solid proof of Trojan's high oil content and feeding qualities

Shell Out — Would you believe 85%? We've got "super" shellers for you right now — will have even more next year

SEE YOUR DEALER NOW AND BE SURE

TXS-85—Early Season
TXS-108—Medium Season
TXS-115—Full Season
All Single Cross

F-90—Early Season
F-115—Medium Season
C/F-123—Full Season
Regular Cross

Ask For Pamphlet on Hy-Lysine Corn — We Have It!

TROJAN/CRIB-FILLER DEALERS

FARMERS SUPPLY CO.
Lancaster

ZIMMERMAN'S ANIMAL HEALTH SUPPLIES
R. D., Lititz

MUSSER'S MILL
The Buck

F. W. BROWN'S SONS, INC.
Sinking Spring

LANCASTER BONE FERT. CO.
Quarryville

BOWBERGER'S STORE
Elm

KIRKWOOD FEED & GRAIN
Kirkwood

GEHMAN FEED MILL
Dover

ANDERSON FEED & GRAIN
R. D., Oxford

MARTIN FEED MILL
Ephrata

H. H. GOOD MILL
Fivepointville

WEAVER FIX-IT SHOP
R. D., New Holland

E. H. KEEN & SON
Atglen

DISTRIBUTED BY
STANFORD SEED COMPANY
Plymouth Meeting, Pa. 19462