

# Lancaster Farming

## SECOND SECTION

### Entries From 9 States In NEPPCO Expo Youth Events

Nine states have already lined up teams of talented poultry youngsters for the program of youth competition at the exposition of the Northeastern Poultry Producers Council (NEPPCO) in Atlantic City, Oct 14-15-16

Drawn from the ranks of 4-H Clubs and Future Farmers of America chapters in the Northeast, they'll swarm into the Chalfonte-Haddon Hall Hotel for a program of demonstrations, egg and poultry grading contests, education sessions and social events.

Getting top priority on the list will be the selection of the "Star Poultry Farmer of the Northeast" Three states have already announced their entries — with others expected to report in before the convention opens Candidates are picked from among the state's outstanding FFA participants States already announcing entries are Delaware, Pennsylvania and West Virginia

States entering the competitive poultry and egg grading for 4-H Club teams include Delaware, Maryland, New Hampshire, New Jersey, Pennsylvania, Rhode Island and Virginia FFA teams have been entered by Delaware, Maryland, Massachusetts, New Hampshire, Pennsylvania, Rhode Island and West Virginia.

Seven states have picked out-

standing 4 H youngsters to make presentations at the exposition on some phase of poultry foods science, production or marketing

The program gets underway with registration on Sunday, Oct 12 Monday is given over to various demonstrations and competitive events Tuesday includes a special dialogue session with adult industry men, capped with the annual Youth Awards Banquet in the evening

#### Fertilizing

Early Fall is an excellent time to fertilize the lawn and many turf areas have already been fertilized; in some cases a weed control herbicide can be used with the fertilizer I'd like to present a word of caution in the use of these weed control materials There is little question that they will control many weeds but some of them may also be washed into the soil and down around the roots of trees and shrubs and do damage Home owners are urged to read the instructions and follow them carefully, some materials should not be used under any tree or shrub Serious damage to trees has been experienced in some areas If plants show herbicide damage, there is little that can be done to stop the absorption of the chemical, they can be kept well watered and fertilized early in the Spring

### Pennsylvania To Observe Co-op Month

Gov Raymond P Shafer proclaimed October as Pennsylvania Co-op Month

Governor Shafer urged the State's residents to give recognition to the "constructive and responsible role" cooperatives have played in Pennsylvania's economic progress

The proclamation signed by the Governor noted that "all segments of Pennsylvania's economy, particularly agriculture, have progressed through cooperative endeavors in processing, marketing and distribution of products"

In the Commonwealth of Pennsylvania alone there are nearly 1,625 local cooperatives, of which 1,450 are credit unions and the remainder are primarily farmer cooperatives

Nationally, a third of the families in this country have a big stake in rural and urban cooperatives whose assets run into billions of dollars In total, about 50,000 cooperatives have memberships of almost 53 million — with some duplication of membership as an individual often a member of more than one cooperative Net savings to consumers through cooperative services amounts to about \$500 million annually

In declaring October as Co-op Month nationally, President Richard M Nixon said, "Pro-

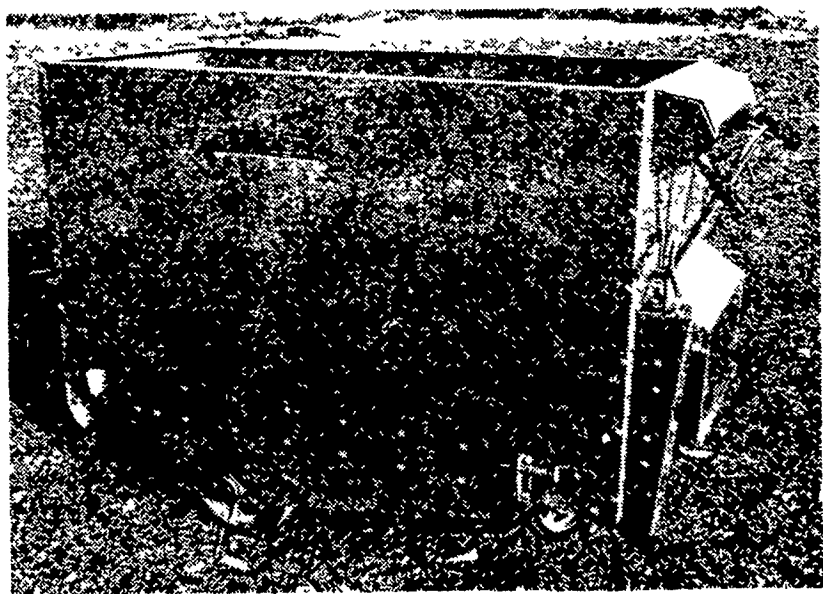
(Continued on Page 24)

### CAN YOU BEAT THIS?



CORN 18 FEET HIGH Miss Verne E. Kottler, Secretary to M. T. Kauffman at A. H. Hoffman Seeds, Inc in Landisville grew this extra tall corn in her flower bed Kauffman is in charge of hybrid corn work at Hoffman's seed division so naturally Miss Kottler had good advice on what variety to grow.

## WEAVERLINE Mechanized Feeding Battery • Gasoline • Electric Self-Propelled Self-Unloading Silage Carts



Perfectly Balanced — Compact for Close Turns  
Fast Unloading — Large Capacity  
You Will Like Our Safety Bumper Clutch

**THINK!** YOUR SILO UNLOADER THROWS OUT HUNDREDS OF TONS OF SILAGE EVERY YEAR

Are YOU Still Shoveling It? — Why?  
This is a Better Way to In-Stanchion Feed Your Herd

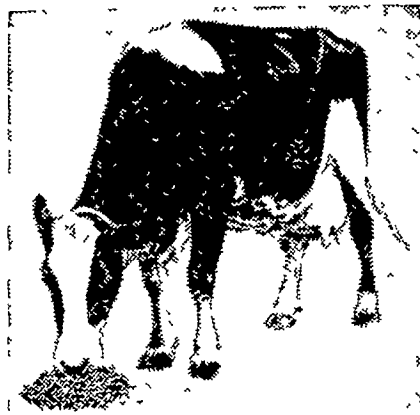
## RYDER SUPPLY CO.

WAREHOUSE and PARTS SERVICE

RR 5, Chambersburg, Pa.

Phone: 717-263-9111

## The Best Milk Production



### Comes From A Nutritionally Satisfied Cow!

We are Now Booking HQ MASTER BLEND and 38% MILK-MASTER Concentrates. These feeds are very palatable and well fortified with all the necessary proteins, vitamins, and minerals

Six Months is the length of our Shipping Period on all booked feeds



L. J. DENLINGER CO.

Paradise, Pa.

768-8244

"DON'T DELAY — BOOK TODAY"