

Open House Set For Animal Bldg.

Open house will be held Sept. 27 for the new Animal Industries Building at Pennsylvania State University. The new facility houses the departments of Animal Science, Poultry Science, and Veterinary Science.

The ground floor includes 13 air-conditioned rooms for small experimental surgery. Cage washing and feed preparation rooms are located there as well as a shop and large mechanical room.

The second floor features offices and laboratories for the Department of Veterinary Science.

ence. Located there is a lecture-demonstration room equipped with microscopes and audio-visual facilities with capacity for 48 students. There is also a laboratory for courses in nutrition and physiology with space for 20 students.

The third floor houses the offices and laboratories for the Department of Poultry Science, plus a reading room for all three departments.

The top floor accommodates the offices and laboratories for the Department of Animal Science. Office and laboratory arrangements are essentially the same on each floor.

This new Penn State Animal Industries Building features 27 research laboratories, most of which are about 600 square feet in area with an office attached. Such an arrangement accommodates a faculty member and one to three graduate students.

Chairman of the open house committee is Floyd W. Hicks.

Broiler Marketing Guide Updated For 1969

The U.S. Department of Agriculture has updated its "1969 Broiler Marketing Guide" issued last May. The updated recommendations suggest levels of production for the fourth quarter of 1969 and the first quarter of 1970.

The guide suggests levels of placement in two areas of production — hatching eggs in incubators for subsequent marketing as broilers and pullet chicks in hatching supply flocks.

On the number of eggs to be placed in incubators, USDA recommends:

For placements resulting in broilers to be marketed during the fourth quarter of 1969 — an increase of 7 percent from the same quarter in 1968.

For placements to be marketed as broilers during the first quarter of 1970 — an increase

of 5 percent from a year earlier, and for placements to result in broilers to be marketed during Thanksgiving, Christmas, and New Year's holidays — a reduction of 30 percent from placements during the same periods a year earlier.

On the number of pullet chicks to be placed in broiler hatchery supply flocks, USDA recommends:

Pullet placements for the balance of 1969 — same as in 1968, and Pullet placements during the first quarter of 1970 — an increase of 3 percent from the same quarter in 1969.

These recommended placements are maximums. If producers exceed them, the consequences could be greater supplies than needed and substantially lower prices.

The basic ingredients for an excessive increase in broiler production have been evident in the broiler industry for some time, USDA reports. The demand for broilers has been unusually strong. And the broiler hatchery supply flock has been increased substantially from a year earlier. If the demand for broilers should moderate later this year and in 1970 because of increased supplies of red meat and a decrease in the rate of growth of the economy, this would place severe pressure on broiler prices, USDA points out.

The Broiler Marketing Guide is issued by USDA's Consumer and Marketing Service to aid producers in adjusting their output to the needs of consumers. The recommendations are aimed at averting an under-or-over-supply of broilers on the market, with resulting extremes in prices.

Ephrata Fair
(Continued from Page 17)

Pennsylvania. The Midway features free entertainment daily which includes "Kiddies Day" on Thursday afternoon at which time school children up to 12 years of age enjoy free rides, as guests of local business and industry. Nightly band concerts, the Mrs. Lancaster County Fire Chief contest will be held on Thursday night; 4-H and FFA Baby Beef, Dairy Cattle, Swine and sheep will be judged on Thursday. A Tractor Driving Contest will be held on Saturday at 10 a. m. The livestock shows, poultry displays, grain, seed, forage and tobacco will be exhibited in the tents located in the Ephrata Community Park.

Daytime visitors to the fair will find a full complement of displays in the store windows and in the exhibits tent on Main Street, including displays ranging from flowers, home-baked and canned goods, art, fancy needlework, crafts, 4-H and FFA exhibits, and products of farms and gardens.

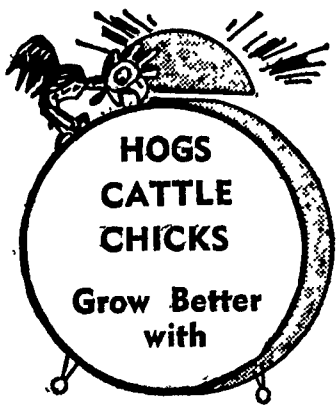
Farm machinery, appliances, trailers, campers and new automobiles will also be displayed.

Saturday afternoon will be highlighted with the annual Baby Parade held on Main Street starting at 2 p. m., with thousands on hand to see the beautifully designed floats and costumes as the small fry parade through downtown Ephrata.

Another highlight of the fair will be conducted on Saturday night at 8:00 p. m. when young ladies from Lancaster County Communities will vie for the title of Miss Lancaster County, a preliminary contest to next year's Miss Pennsylvania Pageant.

According to Mayor Lloyd S. Gerhart, Fair President and the fair officials expect that more space will probably be sold for stands and exhibits this year than at anytime in the past.

The fair was inaugurated in 1919, as a homecoming for returned Veterans of World War I.



PIONEER FEEDS

Local Farmers Know a Good Feed When They Try It!

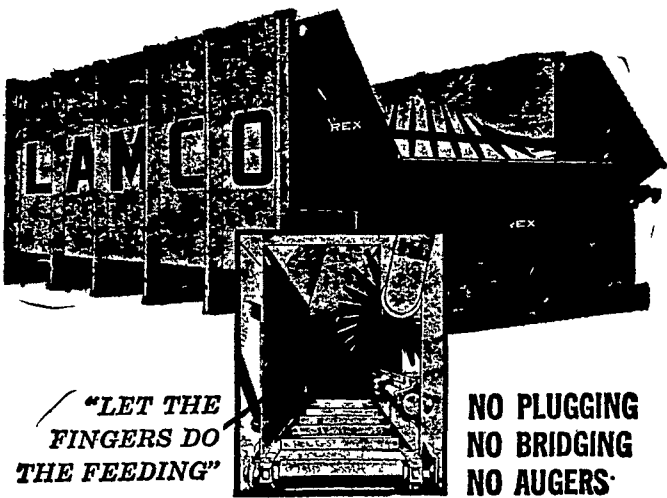


ELMER M. SHREINER

Trading as Good's Feed Mill
Specializing in DAIRY & HOG FEEDS
New Providence, Pa.
Phone 786-2500

HERE ARE 6 WAYS WE COULD SKIMP ON THE FAMOUS LAMCO FORAGE BOX

- 1 Use a Jerky Ratchet instead of SMOOTH WORM DRIVE
- 2 Replace our Safe Heavy Duty Outfeed Apron with a dangerous auger.
- 3 Use common beater in place of our Spiral beater which peels off the material. No Bunching — No Plugging



- 4 - Skimp on a Plain open Jaw transmission in place of our Protectively enclosed unit.
- 5 - Replace our Positive expensive worm drive with open gears on our Lower Beater Drive
- 6 - Use ordinary soft wood for our main Stringer and Cross pieces instead of Strong Oak.

BUT...

We won't skimp — We know how valuable Farmers' time is in the Harvest.

Lamco is Safe — Smooth and Trouble free

KINZER EQUIP. CO.

Your Equipment Center in Lancaster County
Box 23, Kinzer, Pa. Phone 442-4186

BARTLETT PEARS

IDEAL FOR CANNING AND EATING FRESH

- Graded and sized 4 ways



SHANK FRUIT FARMS

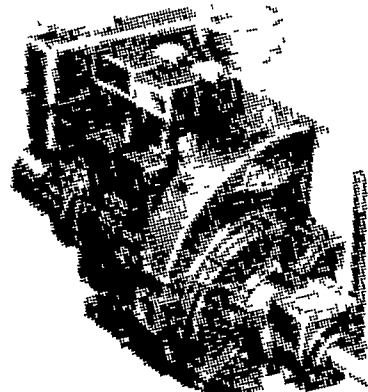
Route 324, New Danville Pike

Open daily 10 a.m. — 6 p.m. Sat. 'til 6 p.m.

Closed Sunday

DISTRIBUTOR FOR LISTER DIESELS SALES - PARTS - SERVICE

We sell from 3 1-2 K. W. to 100 K. W. Generator Sets.



Lister Diesels can be mounted on various pieces of equipment.

FREE ESTIMATES ON SET-UPS

Such as: Irrigation, Refrigeration, Electric Generating Plants, etc.

Also Creamery Package Bulk Milk Tanks

C. B. HOOBER & SON

Intercourse, Penna.

Phone: 768-8231