

**TROJAN**

## ATTENTION FARMERS A TROJAN FIRST

### Trojan's High Lysine Seed Corn

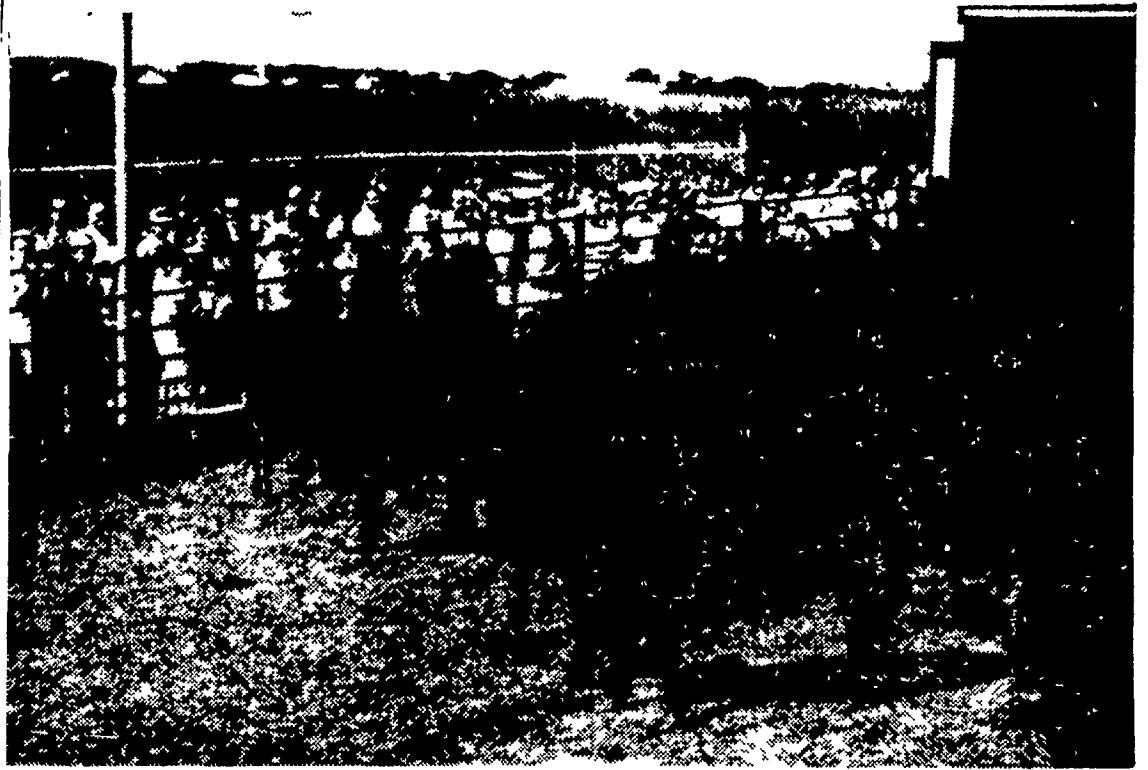
Hi-Powered Hybrids With Ripe Ears  
On Green Stalks

Available first time in the East from America's  
fastest growing seed company. Also for other outstand-  
ing Trojan and Krizer Hyb. Varieties Contact:

# EUGENE G. HOOVER

Lantz R#3, Pa.

569-0756



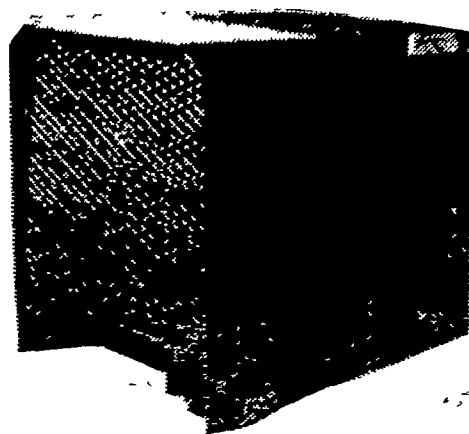
A LARGE CROWD looks over a pen of nice Angus steers on the M. A. Stoltzfus Farm Thursday morning. The event was the first stop on the ASCS tour. Stoltzfus feeds over 700 head of steers and 200 head of hogs each year along with some race and quarter horses. Other stops on the

tour include the Robert Martin Farm, at Goodville for observation of waterways and drop inlet conservation work. Lunch at noon was had at New Holland Park and the afternoon was spent on a tour of the New Holland Machine Company.

L F Photo

# AUTOMATE EXISTING CAGES

With The Big Dutchman Low-Cost  
Approach To Cage Automation



FEED HAS BEEN REMOVED TO  
EXPOSE BIG DUTCHMAN CHAIN  
TO FEED TROUGH

- FITS ANY SIZE OPERATION
- BIG DUTCHMAN QUALITY THROUGHOUT

- SAVES WORK AND TIME
- BIRDS EAT BETTER—PRODUCE BETTER

# BIG DUTCHMAN

A Division of U.S. Industries, Inc.

Diller Ave., New Holland, Pa.

Phone 354-5168

## Delaware, Chester, Lebanon Co. 4-Hers Hold Sale At Vintage

The Delaware, Chester County 4-H Hog Show & Sale was held at Vintage Sales Pavilion, Friday & Saturday, August 14-15.

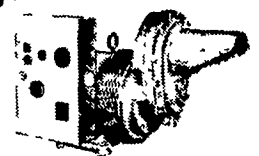
Showing the Champion hog in Friday night's roundup was Charles Wellman, Wallingford Delaware County, a 200 lb. Hampshire Yorkshire cross. The Reserve Champion was shown by Barbara Beam, Chester County, a 200 lb. crossbred hog. The Champion trio scaled 188 lbs. and was shown by Kenneth Beam, Chester County.

At the Saturday auction the Grand Champion sold to M. Shane, Inc., Chester, Pa. for \$82.00 cwt. The Reserve Champion sold to E. W. Martin Inc., Lancaster, for \$59.50 cwt.

There were 57 hogs sold with an average weight of 217 lbs. for an average price of \$30.30 cwt.

The Lebanon County 4-H Sale (show was held at Lebanon Fair) had 67 head of hogs. The Grand Champion, a crossbred shown by Larry Arnold, R 1, Lebanon scaled 210 lbs. and sold for \$60.00 cwt to E. W. Martin Inc.

## When Power Fails



PROTECT YOUR FARM  
WITH A PINCOR PTO  
TRACTOR DRIVEN ALTERNATOR

- 50,000 watts surge capacity
- 16,000 watts continuous duty
- Slow speed—1800 RPM operation
- Cool running triple chain drive transmission
- Heavy duty motor starting
- Close voltage regulation
- Meets NEMA codes
- Heavy duty construction
- Induction hardened input shaft
- Rain proof construction
- Completely wired control box
- Three phase available

SEE IT AT...

**Haverstick Bros.**  
2111 Stone Mill Rd.  
Lancaster, Pa. 17603  
Ph. (717) 392-5722

PINCOR