

● A View (Continued from Page 18)

Federal Income Tax Form with a deduction of \$1,200 per person.

A family of four, earning \$5,000, would pay just \$6 in personal income taxes under this plan. In addition, the State income tax is deductible from the Federal tax.

Consequently, this family could have a tax savings of \$108 a year if the income tax were enacted and the three local taxes abolished.

Our statistics also show that families of four earning up to \$10,000 a year would experience

tax savings. That would cover the majority of Pennsylvania taxpayers.

This is what we are shooting for. I realize that such reforms will not be easy to achieve, especially without the cooperation of local officials. But I am convinced that we have no greater responsibility right now than to start a program of tax reform.

I am also convinced that the tax rebellion would not be so widespread if this reform takes place.

If we can turn Pennsylvania in this direction, we will have truly established a new partnership be-

Vegetable Report

The state's vegetable growers, who earlier in the season feared damage from lack of rainfall, have had to cope with new problems from too much rain. The Pennsylvania Crop Reporting Service indicated the following crop prospects, based on August 1 conditions:

Snap beans for fresh market,

tween the State and her communities.

Even more important, we will have made a lasting contribution for Pennsylvania citizens, present and future.

Lancaster Farming, Saturday, August 23, 1969—19

estimated at 40,000 hundred-weight, unchanged from July 1 at 24,300 tons, down 8,100 tons and at the same level as the two previous years. Some beans in the northeast were hurt by hail, but generally the crop is growing well. Indicated yield for the processing crop was revised upward to 13,000 tons.

Both late summer and early fall cabbage fell victim to June's dry weather and July's excessive rains. The summer variety will show a decrease of 2 percent from last year to an estimated 369,000 cwt., while the early fall crop at 242,000 cwt. is a forecasted drop of 11,000 cwt. from a year ago.

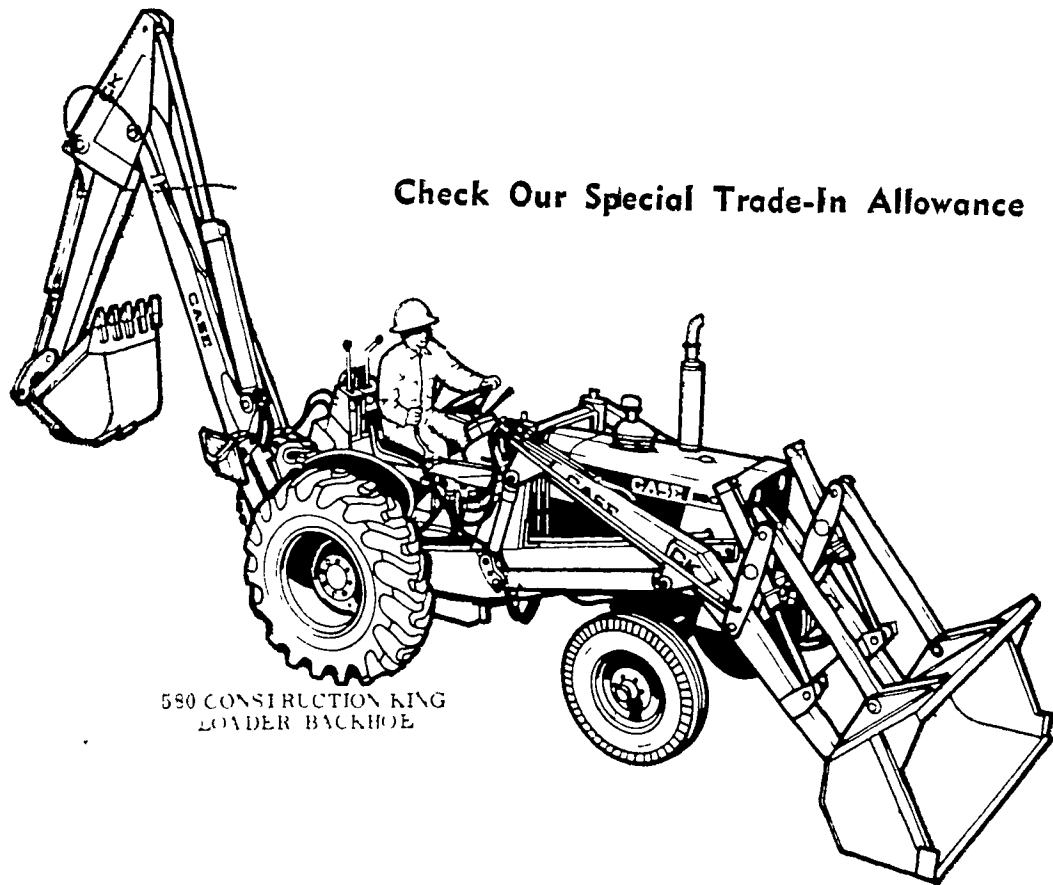
Sweet corn for fresh market benefited from the July rains, creating a 5 percent increase over a year ago to 693,000 cwt.

The processing crop is estimated from 1968. Acreage is reduced to 7,500 acres, 40 percent below last year, and the lowest in the past 30 years.

Tomato growers, who earlier looked forward to increased yields had the rains not come, predict a fresh market crop of 300,000 cwt., the same as last year. The processing crop is estimated at 153,600 tons, or 13 percent less than a year ago.

Peak For Pensions

World War II pensions and death benefit payments probably will reach their peak about the year 2000. The total cost is expected to be \$55 billion a year at that time.



Check Our Special Trade-In Allowance

580 CONSTRUCTION KING
LOADER BACKHOE

JARED R. STAUFFER

CASE Sales & Service

Martindale, Pa.

Phone 445-6465



Now... two sizes

John Deere
Rotary Choppers

Yes, sir, John Deere Rotary Choppers now come in two sizes. There's the 5-foot 15-A for average-acreage growers . . . and the 6-foot 16-A for large-acreage growers.

The rugged 15-A and 16-A are just the ticket for mechanical pasturing, chopping standing hay for silage, shredding brush and stalks, clipping pastures and handling many other jobs around the farm.

See us soon for full details.

A. B. C. Groff, Inc.
New Holland 354-4191

Landis Bros. Inc.
Lancaster 393-3906



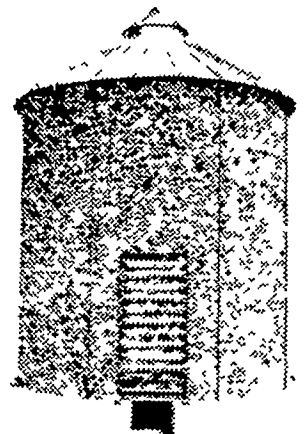
Wenger Implement, Inc.
The Buck 284-4141

M. S. Yearsley & Sons
West Chester 696-2990

Sholtzberger's
Elm 665-2141

Speedy Corn Crib

Speedy Bar-Lok
Construction
gives you greater
Value . . . Longer
Life.



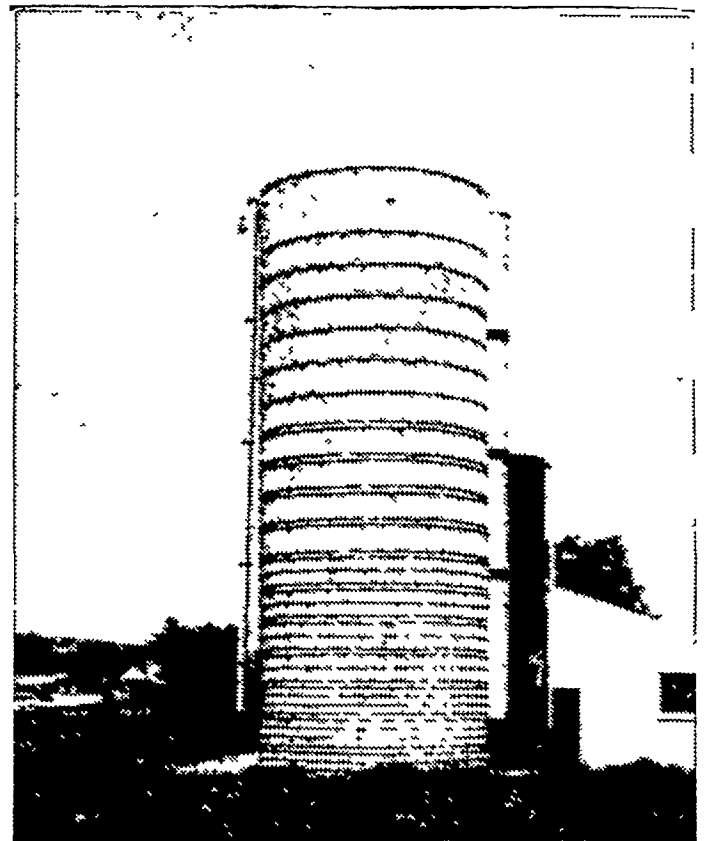
1200 Bu. Size Now Available

Landis Bros., Inc.

1305 Manheim Pike, Lancaster

Ph: 393-3906

TERRE HILL SILOS MONOLITHIC & CONCRETE STAVE SILOS



More Quality More Strength More Economy

Silos • Silo Unloaders • Bunk Feeders
Silage Distributors

TERRE HILL SILO CO., Inc.

TERRE HILL, PA.

Phone 445-3911

SINCE 1927