

# THE ANNUAL LANCASTER AYRSHIRE SALE

Saturday, August 23, 1969

1 p.m. at

Leroy Sensenig's barn just off Rt. 472, 2 mile southeast of Quarryville, Pa.

## 32 Registered AYRSHIRES 32

### FEATURING

- Sound animals with good udders
- Daughters of top approved Sires
- DHIA records
- Certified health charts for all cows
- Fresh cows for fall production

Consignments by Penna.'s leading Ayrshire breeders. One load of choice cattle from Virginia.

For Catalog write: **LEROY C. SENSENIG**  
Sale Manager  
Quarryville R2, Pa.  
Phone 786-3128

# SPECIAL CATTLE SALES 1969

## Abingdon Livestock Market, Inc.

ABINGDON VA. Phone 628-3551 — Area 703

### Sale Every Thursday — All Classes Livestock

500-1000 lb. Native Steers — Native Steer-Heifer Calves

1st Hfrd. STEER Sale—1083	Tue. AUG. 26—7 pm
2nd Hfrd. STEER Sale—2167	Tue. SEPT. 9—7 pm
State Hereford STEER Sale	Tue. SEPT. 16—7 pm
Angus STEER Sale—1777	Tue. SEPT. 23—7 pm
State Angus CALF Sale—947	Tue. SEPT. 30—7 pm
3rd Hfrd. STEER Sale—2679	Tue. OCT. 7—1 pm
State Hfrd. CALF Sale—1319	Tue. OCT. 14—7 pm
Tri-State CALF Sale—2998	Tue. OCT. 21—1 pm
4th Hfrd. STEER Sale—1472	Tue. OCT. 28—1 pm
Angus COWS & HFRS.	Mon. NOV. 3—7 pm
Sponsored by Virginia Angus Association	
2nd Tri-State CALF Sale	Tue. NOV. 11—7 pm
Hereford COWS & HFRS.	Wed. NOV. 12—7 pm
Sponsored by Virginia Hereford Association	

## Tazewell Livestock Market, Inc.

TAZEWELL, VA. Phone 982-9921 — Area 703

### Sale Every Monday — All Classes of Livestock

1st Feeder STEER Sale	Wed. SEP. 24—7 pm
2nd Feeder STEER Sale—1000	Wed. OCT. 8—7 pm
State Feeder CALF Sale—600	Wed. OCT. 15—1 pm
Clunch Valley CALF Sale—600	Wed. OCT. 22—7 pm

PLEASE NOTE: On all sales (at both markets) scheduled for 1 pm — cattle will be weighed-in the DAY BEFORE SALE. On all sales (at both markets) scheduled for 7 pm — cattle will be weighed-in and SOLD SAME DAY. All cattle in the sales at both markets will be officially graded by Virginia Division of Markets. Check with your County Agent, the Sales Committee or the Markets for further information.

\* Indicates No. Head 1968 Sales

FOR ADDITIONAL INFORMATION  
WRITE OR CALL

## Abingdon Livestock Market, Inc.

A FEDERALLY SUPERVISED MARKET

Abingdon, Va. 24210 Phone 628-3551 — Area 703

### Pa. Plants (Continued from Page 20)

The five accounted for about 55 percent of the U. S. total put since 1921, and totaled 12 billion pounds, 5 percent below 1967. All cheese production, excluding fullskim American and cottage cheese, was 19 billion pounds in 1968, 1 percent above the record high set in 1967. Wisconsin produced 44 percent of total U. S. output, and with New York, Minnesota, Missouri, and Iowa, accounted for two-thirds of the U. S. total.

Ice cream production (including frozen custard) was a record 772 million gallons in 1968, 27 million above 1967 and 15 million above the previous record set in 1965. For the 8th consecutive year, New York led in production of ice cream, followed by Pennsylvania, California, Ohio and Illinois, together accounting for 40 percent of total U. S. ice cream. Ice milk totaled a record 259 million gallons in 1968, or 4 percent over 1967 — the previous high. For the 29th consecutive year (since records began), California led in ice milk output and with Ohio, Pennsylvania, North Carolina and Illinois, accounted for a third of the U. S. total.

Evaporated whole milk output in 1968 was the lowest in 40 years. At 1,360 million pounds, it was 9 percent below 1967. For seven years in a row Ohio was leading producer, followed by Kentucky, California and Pennsylvania. Canned sweetened condensed whole milk output, at 87 million pounds, was 36 percent above 1967, but 32 percent below 1966. Sweetened condensed whole milk (bulk goods) totaled 67 million pounds, highest in two decades. Plain condensed whole (bulk goods), at 285 million pounds in 1968, 8 percent above a year earlier, was second lowest since 1955. For the 21st successive year, New York led all States, and with Maryland, Wisconsin, Pennsylvania and California, produced 76 percent of the total.

Trimming leaves from tomato, squash, or melon plants with the idea of adding growth into the fruit, is not a good practice. We are aware that some home gardeners do this to their tomato plants to permit more sunlight to hit the tomatoes. Plants have three parts: roots, which gather water and food materials to send them up through the stems, and into the leaves, where they manufacture organic compounds. Leaves also take in carbon dioxide from the air to combine with water to form sugar and starch. Leaves are the plant's factory and good green leaves is one good sign of a healthy plant. Don't remove the leaves on vegetables.

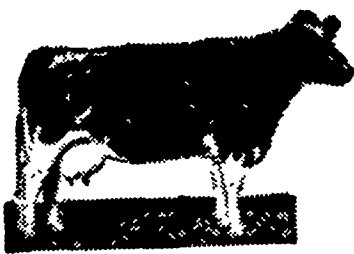
The seeding of winter grains should be in the planning stage; seed supplies should be ordered or on hand. Livestock producers may seed winter grains such as Redcoat wheat or winter rye anytime in August and September and use the growth for fall pasture. This is a common practice in some areas and will lengthen the grazing season. Redcoat wheat is resistant to Hessian Fly and may be planted before the first killing frost. Growers who are discouraged with wheat as a cash crop might consider the growing of more winter barley; the barley grain is a good substitute for corn and may be fed to most livestock. Barley straw is in demand as well as wheat straw.



# PUBLIC NIGHT SALE OF VALUABLE LIVESTOCK THURS. NIGHT, AUG. 21, 1969

STARTING 8:00 P.M. SHARP

SALE LOCATED 5 MILES NORTH OF RT. 222 ALONG 897, 2 MILES NORTH OF REINHOLDS.



## 65 Head of CATTLE

This includes an entire Lackawana County herd. In this herd 11 cows are strictly fresh and the balance bred and checked for pregnancy. Will also have some individual top cows and some feeder cattle.

DON'T MISS THIS SALE!

BUY FOR CASH & SAVE

SATISFACTION GUARANTEED

HEALTH CHARTS NITE OF SALE

Randal Kline — Auctioneer

Vernon and Ray Kline — Owners

Phone area code 215 267-2368 or 267-2298

NOT RESPONSIBLE FOR ACCIDENTS

REFRESHMENT STAND

# CHARLES LONG DISPERSAL

## TUESDAY, AUG. 19, 1969

LANCASTER, PENNA.

Sale held at the Garden Spot Sale Barns of J. M. Brubaker Farm located on Silver Lane which runs off Penn Grant Rd. Willow Street Village, Pa. 4 miles south of Lancaster, just off Rte. 222 and 272.

### 100 REGISTERED HOLSTEINS

(40 Milking Age — Balance are bred and open Heifers)

All tests up to date and ready to go anywhere. Exam for Preg. & Mastitis.

### ALL ARE Sired BY ATLANTIC SIREs!!

13 sell by "Ivanhoe" — 12 sell by "Ivanhoe Star" — 12 by Sequoia Ideal Jo and others.

### ALL ARE Bred TO POPULAR SIREs OF THE ATLANTIC STUD!!

Herd has had only average care which means bargains for everyone.

No testing has been done in herd but some of the cattle show great potential.

This might be the "Sleeper" sale that you have been waiting for.

MAKE YOUR PLANS NOW TO ATTEND AND BUY FROM THIS COMPLETE DISPERSAL!!

Sale starts 11:00 A.M. Lunch Available Catalogs Under Cover

**R. AUSTIN BACKUS INC.** EARL L. GROFF  
Sale Mgrs. & Auctioneers Local Rep.  
Mexico, N.Y. Strasburg, Pa.