

# Weekly Poultry Report

Eastern Pennsylvania  
And New Jersey

Fogelsville

August 5, 1969

Prices of light type hens mostly unchanged however unconfirmed reports indicate occasional lots were traded as high as 12c. Demand good with available offerings generally short of needs. In instances processors reported as hauling live supplies from southern producing areas in an effort to keep plants running as near capacity as possible with available labor. Offerings of heavy hens short of fairly good call. Prices paid at farm: Light type hens: 8-11 M 10-10 1/4c in Pennsylvania M 9 1/2-10c in New Jersey. Heavy type Hens: Tfewr.

## Delmarva

Demand very good and generally exceeding available processed supplies. Heavy rains continue to hinder off farm movement of ample live supplies. Pool truck-lot prices 1/2c higher on US Grade A while unchanged to 1/2c higher on plant grade. Undertone firm.

Try A Classified Ad  
It Pays!

(Prices paid dock weights, cents per lb., except where noted)  
HENS, heavy type 9-15; PULLETS 25-38; ROASTERS 16 1/2-29; RABBITS 25-40; GUINEAS 65-107; PIGEONS (per pair) 90-222 1/2.  
TOTAL COOPS SOLD: 718.

## Vintage

(Continued from Page 2)

Few Choice 835-1040 lbs. 29.25-30.50.

COWS — Utility and high-dressing Cutter 22.00-23.50, few to 24.00; Cutter 20.50-22.50; Canner and low-Cutter 18.25-20.50

BULLS — Good 27.25-28.10, couple Choice 28.75-29.25; Utility and Commercial 25.75-28.25, four head 28.60-29.85; Cutter and low-Utility 23.00-24.50

CALVES 644 — Vealers mainly 2.00 higher.

VEALERS — Choice 44.50-48.00, Good 41.00-44.50, Standard 39.00-42.00, Utility 36.00-40.00, Cull 90-120 lbs 32.00-36.00 65.85 lbs 24.50-31.00.

HOGS 288 — Barrows and Gilts 1.00-1.25 higher

BARROWS AND GILTS — US 1-2 200-245 lbs 27.35-27.75 Few US 1 200-235 lbs 28.00-28.10 US 2-3 200-250 lbs. 26.85-27.25. Sows

## Auction

(Continued from Page 2)

few Choice \$27.75-28.75; Utility and Commercial \$25.50-28.50, few \$28.50-29.85; Cutter and low-Utility \$22.00-25.25.

CALVES 149 — Vealers weak to mostly \$1.00 lower.

VEALERS — Choice \$44.50-47.00; Good \$42.00-44.50; Standard \$38.50-42.50; Utility \$35.00-39.00; Cull 90-120 lb \$29.00-34.00, 65-90 lb. \$25.50-29.00.

SLAUGHTER CALVES — Standard and Good 250-320 lb. \$34.00-39.00, Utility \$30.00-33.50.

HOGS 303 — Barrows and gilts 50, instances 75 higher.

BARROWS AND GILTS — US 1-2 210-230 lb \$27.85-28.10 One lot US 1 225 lb. \$29.00. US 2-4 200-240 lb. \$27.60-27.75. 250-255 lb. \$27.10-27.50. One lot US 3-4 265 lb. \$26.25.

SHEEP 37 — Spring lambs fully steady.

SPRING LAMBS — Choice 55-85 lb. \$29.00-30.00, Good 65-85 lb. \$25.50-27.50, one lot Utility \$22.50

— US 2-3 430 510 lbs 20.75 21.75.

SHEEP 75 — Spring Lambs steady to weak

SPRING LAMBS — Choice 50-100 lbs 27.50-31.00, Good 25.50-27.50, Utility 23.00-24.00.



Be still, and know that I am God.—(Psalms 46:10)

We need to take time to go apart, to shut out the noise of our world, and to listen. This does not mean that we have to withdraw from the world, but it means that we need to have moments during the day when we think about God, when we meditate on Truth, when we dwell with God in quietness, when we listen to hear the words of wisdom He has for us.

# Weekly New York Egg Mkt.

From Monday, August 4th to Friday, August 8th

	Mon.	Tues.	Wed.	Thurs.	Fri.
<b>WHITE</b>					
Fcy. Ex Large	52-53	52-53	47-49	45-47	45-47
Fcy. Large	47	46-47	43	41	40-41
Fcy. Mediums	38 1/2-39	39	38 1/2	37 1/2	35-36
Fcy. Pullets	22	21	21	21	21
Fcy. Peewees	15	15	15	15	15
<b>BROWN</b>					
Fcy Large	52	52	52	52	52
Fcy. Mediums	39	39	39	39	39
Fcy Pullets	22	21	21	21	21
Fcy Peewees	15	15	15	15	15
Standards	41	41	39	38	38
Checks	24 1/2	24 1/2	24 1/2	24 1/2	24 1/2

Trend: Market irregular and large white continues in surplus. Some inquiry for retail futures is developing

Copyright 1969 by Urner Barry Publications

## Chicago

(Continued from Page 2)

and Prime 1100-1400 lbs 32.00-33.00, Choice 950-1350 lbs Yield Grade 2 to 4 30.75-32.25, Mixed Good and Choice 30.00-30.75.

Wednesday, High Choice and Prime 900-1025 lbs. Yield Grade 3 and 4 30.25-31.00 load Prime 975 lbs 31.50 on Monday Choice 800-1000 lbs Yield Grade 2 to 4 29.00-30.25, Mixed Good and Choice 28.00-29.00

SLAUGHTER HEIFERS — On Choice 28.00-29.00

## CUSTOM SPRAYING

For Whitewashing

— Spray the modern way —  
Use CARBOLA Spray

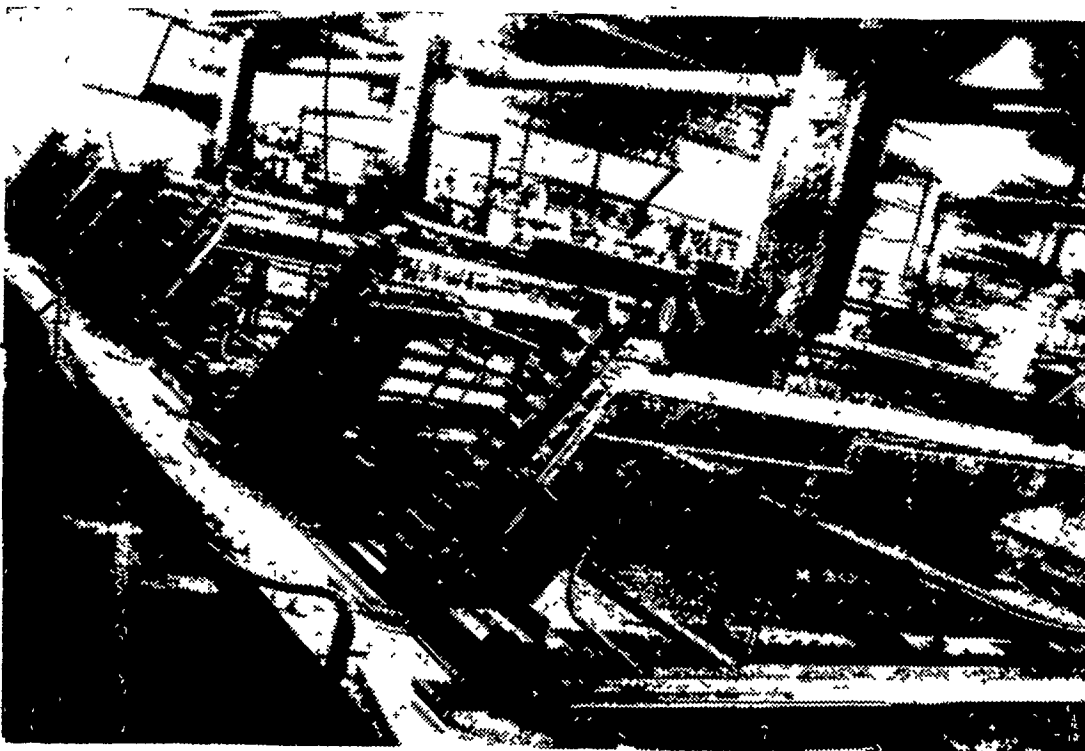
Carbola dries white, disinfects, kills flies, up to 90% less cobwebs. No wet floors.

MAYNARD L. BEITZEL

Wilmer, Pa.

392-7227

## Automation At Its Finest Custom Engineered For The '70s



"CAGE SYSTEMS"

POULTRY EQUIPMENT IS OUR BUSINESS

WE SELL, SERVICE, AND INSTALL



**E. M. HERR EQUIPMENT, INC.**

R.D.1, Willow Street

464-3321

# BREAK the BOTTLENECK at the BASE of YOUR SILO with the



Handles over 100 tons of corn silage an hour, blows it over 100 feet high

Instead of the usual 90° turn that momentarily stops the crop and reduces blowing capacity, the No. 56 Blower has a 45° feeding angle. (See small illustration.) Corn silage or haylage is augered in a more straight-line direction, so the flow is uniform, and the chopped forages move much faster. Then an exclusive 56-inch rotor and six wide paddles shoot the silage upward with a tip speed of 90 miles an hour, at 540 rpm, with a direct pto drive.

The hopper extends 20 inches from the housing for easy drive-through clearance. Stop in and let us estimate how much the McCormick International No. 56 Blower can speed up your operation.

**Cope & Weaver Co.**  
NEW PROVIDENCE  
786-7351

**Messick Farm Equip.**  
ELIZABETHTOWN  
367-1319

**C. B. Hooper**  
INTERCOURSE  
768-8231

**Kauffman Bros.**  
MOUNTVILLE  
285-5951

**International Harvester**  
Sales and Service  
EPHRATA 733-2283