

### New York Bank Lays Psychedelic Egg

To most New Yorkers, an egg in a nest has always meant a savings account at the Chase Manhattan Bank. Since 1956 the bank has used an egg-in-a-nest trademark to vigorously promote building a "nest egg" through savings at their local branches and its exposure over the past 13 years has made it as well known to the city's natives as the Statue of Liberty is to the tourists.

Recently the egg has changed to keep pace with the times. Although its shape is still obvoid, the Chase Manhattan Egg now bears brilliant psychedelic colors and flower patterns, including a large pink "5%" figure to indicate the new interest rate returned on Nest Egg accounts. The new psychedelic egg was introduced in an advertising campaign that proudly announced, "We've Improved The Egg"

Eggmen in the area feel that the bank's egg could have been better improved had it been inverted from its improper air cell down position, the manner in which the egg is always shown. However, the influence of having a qualified poultryman, Dr. Jonathan Tobey, on the Chase Manhattan staff, gives license to that error, and permits the bank to get away with it.

Psychedelic or white, the egg industry will continue to benefit from the awareness of eggs that the widely advertised Chase

Manhattan Egg produces in New Yorkers. In addition, if the psychedelic egg creates a significant increase in savings accounts for the bank, perhaps the egg industry might consider "improving" their eggs by marketing a similarly brilliant and flower patterned product, the Poultry and Egg National Board report says.

### ● Farm Women (Continued from Page 20)

by president, Mrs. Book, the group approved a donation of \$5 to the Lancaster County Association for Retarded Children. The group hopes to visit Governor, Shafer and the Capitol in October.

The next meeting will be Aug 28 at the Village of Intercourse Community Park when a family picnic, covered dish luncheon will be held. Those planning the menu and other arrangements are Mrs. Book, Mrs. Joseph Nolt, Mrs. Gordon Mellinger and Mrs. Nelson Kreider.

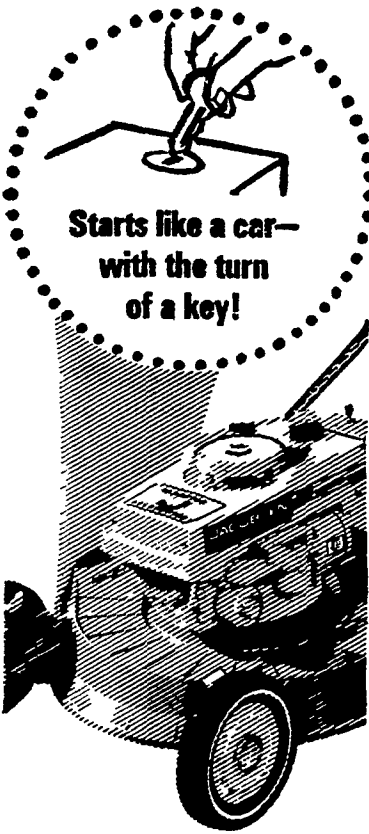
Livestock that are out on pasture are subject to lightning danger just prior to the arrival of thunderstorms. Wire fences, electric fences and single trees are specially dangerous during an electrical storm. Most livestock will seek shelter from a storm and will usually gather under a tree; a grove or group of trees is not as dangerous as a single tree; this is a very difficult problem to eliminate if the single trees are to remain. Wooden structures are a much safer place for the livestock for lightning protection. If producers do have livestock losses due to lightning, the local veterinarian should be called to certify the cause of death; this will be necessary from the insurance company if a claim is to be presented.

Prices received by Pennsylvania farmers during July rose 3 percent from the previous month. Higher prices for milk, eggs, poultry and hogs contributed to much of the increase, while most grains were seasonably lower, according to the Crop Reporting Service.

### JACOBSEN

# Key start

## ROTARY MOWER



Starts like a car—  
with the turn  
of a key!

Easy mowing starts with the turn of a key. Rechargeable dry battery. Charger unit plugs into any outlet. Mow Modern with Jacobsen exclusives... 4-Blades, double cutting action... fold down handle—stores easy. Come in and see our complete selection of Jacobsen mowers.

A full line of Jacobsen mowers from which to choose rotary, reel & Riders.

### HALDEMAN'S GARAGE

Bird-in-Hand, Penna.  
Phone 393-9267

### Start raising more and better Calves the Easy NURS-ETTE way

No more carrying pails of warm water or hand mixing milk replacer. Just fill the hopper of the NURS-ETTE with milk replacer and the NURS-ETTE will mix milk replacer and warm water and keep it warm until calf nurses the mix (approx. 14 oz.)

Then it will mix a fresh batch of water and replacer.

For more information contact

## YOUNG BROS.

NURS-ETTE SALES AND SERVICE

Ph. 717-548-2462  
Peach Bottom, R. D. 1, Pa. 17563



## Create A

HEALTHY ENVIRONMENT  
IN YOUR

## POULTRY HOUSES

USE

# "LITTER-LIFE"

A MINERALIZED CULTURE

To "Treat" Built-Up Litter

An OLD concept made effective...

with NEW scientific techniques

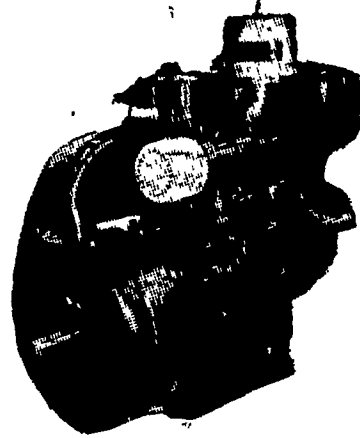
Call or Write for Information and Literature.

## ZOOK & RANCK, INC.

R.D. 1 Gap, Penna. 17527 Phone 717-442-4171

## Lancaster Farming Ads Pay

★ "Petter Power Pays" ★  
WORLD LEADERS IN DIESEL ENGINE DESIGN



1 1/2 to 45 H.P.  
Continuous Rating

### 1, 2, 3 & 4 CYLINDER ENGINES AVAILABLE

## NO MIDDLE MAN

We buy direct from the factory — Full range of engines in stock backed by the best after sales service — Make us prove it.

Petter offers a wide range of Diesel Power Units suitable for a variety of portable equipment and stationary applications.

For Prompt and Efficient Service Call

YOUR AUTHORIZED PETTER DISTRIBUTOR

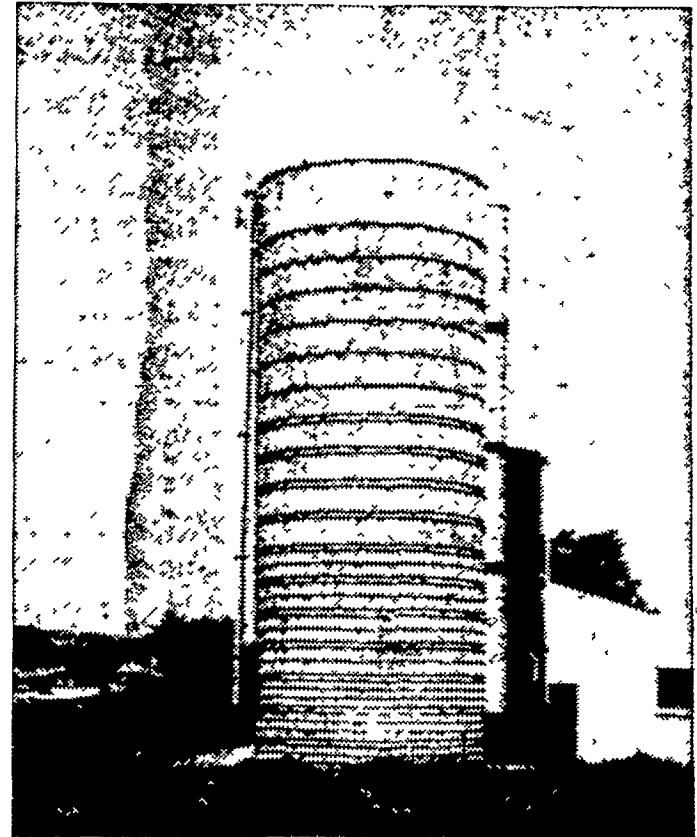
## GEHMAN BROS.

Gas and Diesel Engines Sales and Service

1 Mile North of Terre Hill on Route 897  
East Earl, R. D. 1 Pa. Phone 215 445-6272

WE ARE AS CLOSE AS YOUR TELEPHONE

## TERRE HILL SILOS MONOLITHIC & CONCRETE STAVE SILOS



More Quality More Strength More Economy

Silos • Silo Unloaders • Bunk Feeders  
Silage Distributors

## TERRE HILL SILO CO., Inc.

TERRE HILL, PA. SINCE 1927 Phone 445-3911