

WASHINGTON REPORT

Congressman Edwin D. Eshleman
16th District—Pennsylvania



As you read this column, my staff and I will be settling into new quarters in Washington. We are moving from the Longworth House Office Building to Room 416 of the Cannon House Office Building.

If you could compare the two offices—the old and the new—you would know why the change of locations is a desirable one. First, there is the matter of convenience. We now will have three connected rooms as opposed to our previous two. Second, there is no doubt but what the Cannon Building offices are a little nicer since they were all renovated

and updated just a couple of years ago.

As with so many things in the Congress, getting a new address is dependent on seniority. In other words, one's choice of office is based upon his years of service in the Congress. The longer you're in the House, the better your chances of getting the kind of workspace you desire. In cases where the years of service are the same, a drawing takes place among the various Congressmen wanting the same location to determine who will have the first pick.

I have been attempting to get

across the street on Capital Hill and into the Cannon Building since the end of the last Congress. The initial round of office selection took place in early December as all Congressmen lined up their chambers for the 91st Congress. The staff and I participated in that most frustrating procedure. We failed to get our first several choices so we stayed put in the Longworth Building.

Since that initial round, we have had more opportunities to get on lists for other offices. As Representatives resign or die, their office spaces open for selection by other Members. Finally, our fortunes changed, and we were able to get a nice suite on the 4th floor of the Cannon Building.

For the staff and myself, this move will mean that we will have to do some readjusting, but it also means some changes for my 16th District constituents.

If you want to contact me, the address will now be: 416 Cannon House Office Building, Washington, D.C. 20515. My Washington phone number, Area 202-225-2411

will remain the same. If you want to visit me when you're in Washington, and I encourage you to do so, you will now find me on the fourth floor of the Longworth Building.

Just one final point. During the next few days, the shift of locations will have our Congressional operations a little up in the air. In the turmoil of moving, my replies to your letters and other communications may be somewhat slower than normal. Please bear with us for this short period because I sincerely believe that the new office will greatly enhance our ability to give better service once things get settled down.

Distance Measure

The mile comes from the Latin "mille" or thousand, and was determined by the thousand double steps of the average Roman soldier.

In 1968, some four million retired Americans received almost \$5 billion from private pension plans

With the recent heavy rains throughout most of the county, it appears that another good corn crop is in the making. Plans should be made for the proper storage of this corn; we recommend corn silage as one of the best ways to harvest the crop with maximum feed nutrients. If upright silos capacity is insufficient, then trench or horizontal silos can be constructed to store the silage. Livestock and dairy producers should recognize the great value of corn silage in an economical feeding program. Ear corn that is stored on floors and other temporary places may spoil and will certainly contribute to the growing rodent problem. Rodent proof storage for all grains is one way to reduce the rat problem.

Political Parties

Five different political parties have been represented in the presidency of the United States—Federalist, Democrat-Republican, Democrat, Whig and Republican.



GET YOUR MH-30 NOW

for tobacco sucker control at the following Agway Stores

New Holland
219 S. Railroad Ave.
354-2146

Quarryville
27 E. 4th St.
786-2126

Lancaster
Manheim Pike and Dillerville Road, Lancaster
394-0541

FREY FREE STALL

Lifetime Free Stall Housing



Cut bedding costs 75%, reduce labor for barn cleaning and cow washing; reduce teat and udder injury to the minimum — house your milking herd in free stall housing. Each cow provided a stall for loafing. She won't be stepped on, the rear curb forces manure out into alley for mechanical cleaning or washing. A few minutes twice a day cleans the stalls and curbs, bedding lasts almost forever if your stalls fit the cows. Popular sizes are 6'6", 7' and 7'6". Size 'em by breed.

Our free stall partition may be mounted on wooden head boards or we make a steel divider. Set the legs in 8 to 10" concrete curbs to hold and retain bedding. Stall floor can be soil, sand or gravel. Bedding — straw, sawdust, peanut hulls, ground corn cobs, etc. Should be installed with paved alley surface 8 feet wide for mechanical cleaning or washing.

- 8 Models all steel welded farm and feedlot gates
- 2 Models all steel welded head catch gate

For prices, contact: Fred Frey, Mgr.
786-2235 (717) **FREY BROS.**
R. D. #2
Quarryville, Penna. 17566

MARK YOUR CALENDAR FOR THE SECOND NEBA SALE

Tuesday, August 5, 1969 (12 Noon) Reading, Pa. Fairgrounds

THIS SALE WILL FEATURE 30 DAUGHTERS OF WHIRLHILL KINGPIN VG PQ 1/69

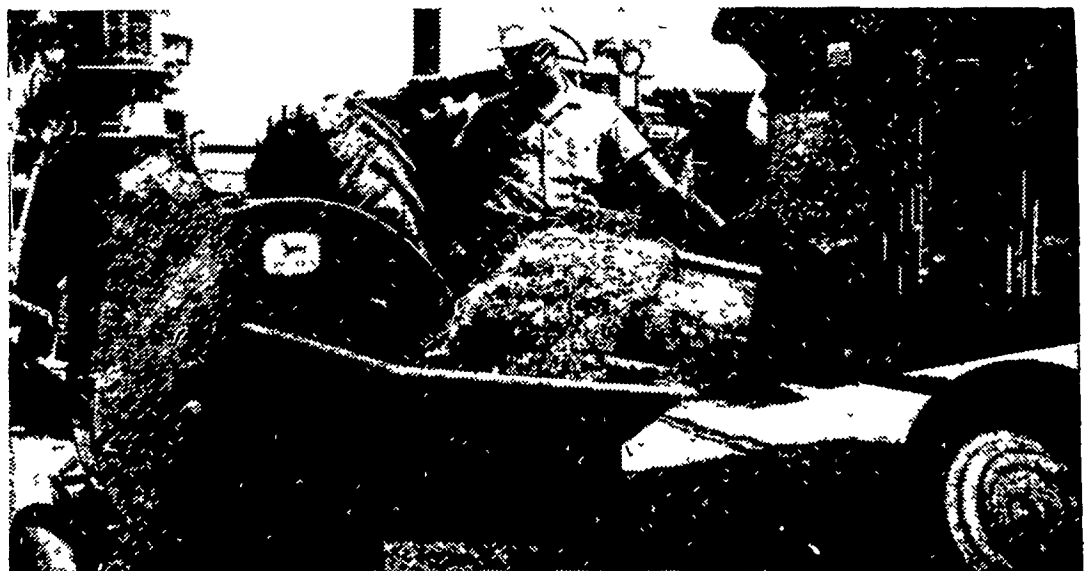
This is the greatest group of Kingpin daughters ever assembled. 2 DAUGHTERS OF SIMPSON FARM TIDY GENT VG GM — 25 SELL BRED TO HIM. Washbon's 1969 Directory lists GENT as the NUMBER ONE A.I. proven sire in the U.S. for improving type.

ALSO SELLING — DAUGHTERS OF GALAXY, DUPLICATOR, IMAGE, WES, POSCH, ADMIRAL, SKOKIE & MANY OTHERS.

Doty Remsburg, Selector, took his pick. As a result, 60 high quality Registered Holsteins will sell. Nearly half of this group are bred heifers. All consignments are due at or near sale day. Many are from unclassified herds and very few have been pictured. But — THE POTENTIAL IS HERE. Best of all, THESE COWS WILL SELL AT PRICES YOU CAN AFFORD. And they are bred just right to help you build your milk base.

Sale Managed By
R. Austin Backus, Inc.
Mexico, New York

For Catalogs write
NEBA
NORTHEASTERN BREEDERS ASSOCIATION
R. D. #2, Tunkhannock, Pa. 18657



Efficiency Plus

John Deere 60-H Hopper Blower

A wide range of fan speeds matches the John Deere 60-H Hopper Blower to silo height . . . type of crop blown . . . and the available horsepower. This is a John Deere exclusive! Look at these other features: auger feed . . . 9-inch pipe . . . and an adjustable band around the fan to permit blower to set away from the silo and still keep the pipe straight. Ask us today about the efficient 60-H Blower. Our Credit Plan makes ownership easy.

A. B. C. Groff, Inc.
New Holland 354-4191

Shotzberger's
Elm 665-2141

M. S. Yearsley & Sons
West Chester 696-2990

Wenger Implement, Inc.
The Buck 284-4141

Landis Bros. Inc.
Lancaster 393-3906



Choose from The Long Green Line of Customized John Deere Equipment