

Lancaster Farming

VOL. 14 NO. 29

Lancaster Farming, Saturday, June 14, 1969

\$2 00 Per Year

Garden Spot Farmers See Neighbors' No-Till Corn

You just finish making first cutting hay, hitch to the no-till corn planter and plant corn. No plowing, no disking and no harrowing. Just run out through the field and plant.

That is what some Lancaster County farmers are doing and a group of Garden Spot Young Farmers took a tour Thursday afternoon to their neighbor's farms to see how they like the new idea.

The father-son team of John E. and John C. Campbell, New Holland, provided the first example. Here three strips of corn were planted. When you first looked at one of them, you thought it was alfalfa stubbles. And it had been until a chemical was applied to kill the alfalfa, and corn was planted right in the sod field without any plowing.

Yes, you could see out the row in what appeared to be a good stand of corn. Other fields were planted in old-corn stalks and grain stubbles.

"We feel we save at least \$800 per acre in planting costs," the younger Campbell said, "even though the weed killers cost more. You could also add a dollar value to the several days we saved in planting time." He did stress the importance of killing the under crop in this type of operation.

The Campbells used 1 qt of Paraquat and 2 lbs. of Atrazine per acre, with a spreader material to facilitate the coverage.

Paul S. Zimmerman planted corn in rye stubbles and the rye has shot up heads, though the corn stand looks very good and healthy. This Lititz R4 farmer says he is more concerned with the grass in his regularly planted corn field than with the rye. "If the yield is as good," Paul said, "this method really eases the work load."

A field of corn described by the touring farmers as looking "the way a no-till corn field should look," was found at the farm of Paul Harsh, also Lititz (Continued on Page 7)

Herr Lamb Wins National Show

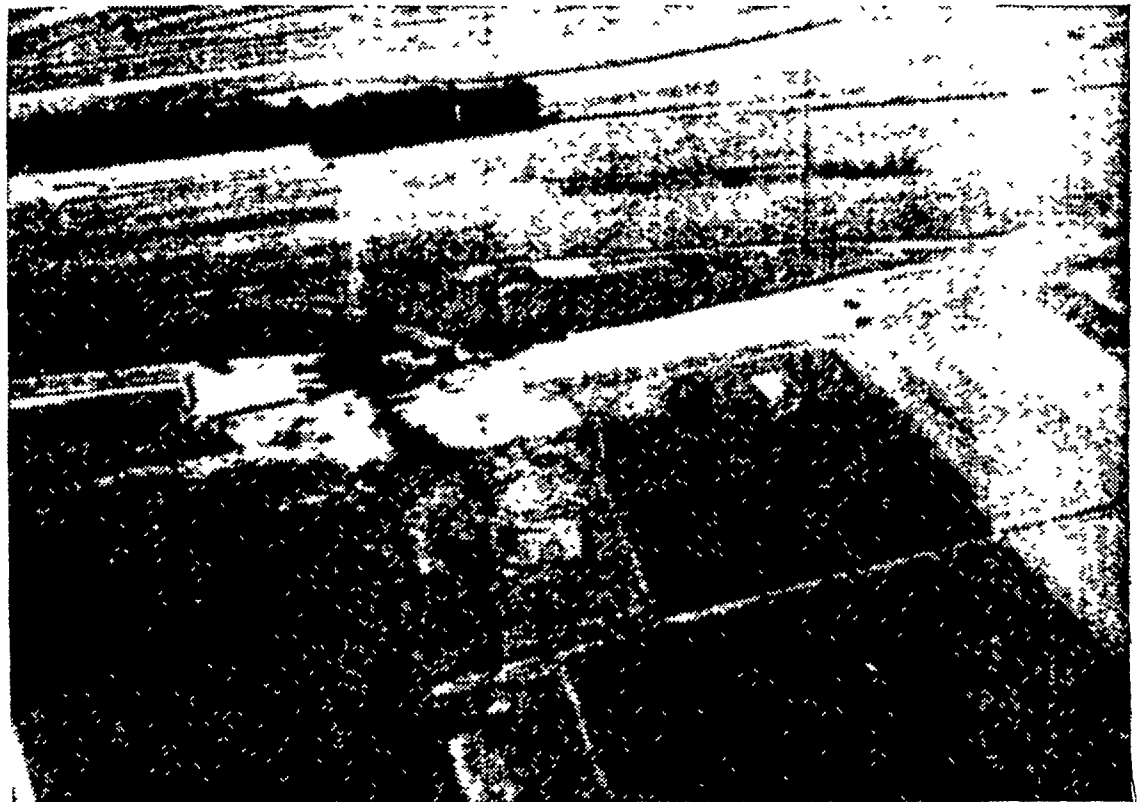
A Dorset ewe lamb won national recognition for her County owners Wednesday, by becoming reserve grand champion at the Eastern Stud Ram and Ewe Show held in Staunton, Va. The home bred lamb shown by Mr and Mrs Robert Herr and family, Narvon R2, then went on to sell for \$375 in the national sale the following day. This selling price was the top of the day and was equalled only by the champion of the show, a yearling ewe shown and sold by (Continued on Page 6)

"Heartpower" Is The Theme For 4-H Congress

"Heartpower" is the theme for the 1969 Pennsylvania 4-H Congress to be held next week at Penn State and 31 Lancaster County youths are scheduled to be present along with three chaperones.

The conference is held each year to give delegates a chance to develop an appreciation and understanding of national problems; practice leadership and responsibility in group action and share ideas and inspiration to others when they return home.

Those attending from the County are: Jesse Balmer, Tim Breneisen, Curvin Denlinger, John Fisher, Dennis Landis, Joseph Lefever, Marlin Weaver, (Continued on Page 6)



AN AIR VIEW of the Robert Noll Farm located 1 1/2 miles south of Mountville. Grassed areas and terraces have recently been constructed on the Noll Farm. Such views of Lancaster County farms will be available when the Lancaster County Soil and Water Conservation District holds the annual Air Tour June 29. The tour leaves from the New Holland Airport. SCS Photo

Swine Producers Double Participation In Check-Off

The swine producers have more than doubled the number of hogs that participated in the Pennsylvania Hog Check-off Program it was reported this week. Mark Nestleroth, local representative, said that the latest totals show 19,236 hogs were in the check-off during May. That was an increase of 10,040 head from the 1,196 head reported in April. January had 5,212, February had 5,484, and March had 4,530 head for a yearly total to date from Pennsylvania of 43,658 hogs.

Nestleroth said Pennsylvania had been ranked 8th in the nation for total check-offs but with the big rise in participation dur-

ing May the State's ranking should be much higher.

Instead of the 10.8 percent of the hogs recorded for the period February 1 to April 30, the May figures represent about 25 percent of the hogs marketed in Pennsylvania.

Nine local markets contributed to the May increase. They are as follows: A & B—1871, Walter Dunlap & Son—1783, J. M. Hoover—1405, Kunzler & Co—87, Leesport Market & Auction—1,017, Ezra W. Martin—214, New Holland S S—23, Vintage S S—10,032, J. P. Warfel—2804.

The check-off program for swine is a voluntary self-help program to raise money for advertising and promotion of pork and pork products.

The Need For Quality Milk

By Dr. James E. Honan
Inter-State Milk Producer

There is very little I can add to the many words of advice and admonition that dairy producers have been given concerning the necessity for them to produce quality milk. I am sure that practically all dairy farmers have really heard enough on this question of quality, inasmuch as, through the years, it has been almost a never-ending request on the part of regulatory agencies, milk dealers and cooperatives.

Through the years the dairy farmers still in business have had to devote considerable time, as well as capital, to keep up an ever-increasing emphasis upon (Continued on Page 10)

Air Tour Set June 29

If you like to see Lancaster County farms and towns from the vantage point of an airplane, you will have the chance. The annual Air Tour of Conservation will be held again this year according to Richard Hackenberger, Secretary of the Lancaster County Soil and Water Conservation District. In a letter to this newspaper, Hackenberger said the tour will be held Sunday June 29 with all flights taken from the New Holland Airport. Rain date will be July 6.

"The air tour is sponsored by the local district," Hackenberger said, "to provide an opportunity (Continued on Page 7)

Farmers Assn. Picnic

The Lancaster County Farmer's Association has announced plans for their annual picnic and chicken bar-b-que to be held Saturday, June 21, at the Lampeter Community Fair Grounds. Starting time is 7 p.m.

Tickets for the event are \$1 and reservations may be made by contacting Mrs. James Kreider, Quarryville R2.

Farm Calendar

Monday, June 16
16 19 4-H Club Congress, Penn State
16 22 Eastern Pa. Horse and Pony Club Show, John Gibson Farm, Dismore
Tuesday, June 17
7 30 p.m.—4-H Lincoln Community Club meets, Mt. Airy Fire Hall
8 00 p.m.—Farm and Home Foundation Directors meet, Farm and Home Center.
Wednesday, June 18
5:30 p.m.—Lititz-Manheim 4-H (Continued on Page 5)



NO-TILL CORN PLANTING is discussed by a group of Garden Spot Young Farmers Thursday afternoon. The plant-

ing was being done in clover stubble on the farm of Adam Zimmerman, Lititz R4. L. F. Photo