

Machinery Custom Rates

(Continued from Page 17)

SPRAYING FOR SPITTLE BUG OR ALFALFA WEEVIL:				
Including cost of material	Acre	4 15		4.15
Excluding cost of material	Acre	1 90		2.05
SPRAYING POTATOES				
Including cost of material	Acre	5 20		5.20
Excluding cost of material	Acre	2 40		2.40
AERIAL APPLICATION (Excl. material)				
Fixed wing	Acre	3 25		3.85
Helicopter	Acre	4 05		4.40
MISCELLANEOUS				
STALK SHREDDING, P.T.O.	Acre	3 45		3.35
SPREADING BULK FERTILIZER:				
Dry	Acre	1 95		2.05
Liquid	Acre	1 60		1.80
Side Dressing	Acre	2 05		2.10
GRINDING FEED:				
Corn, oats or barley	Cwt.	.20		.21
Corn and cobs	Cwt.	.20		.21
Cobs	Cwt.	.28		.24
Additional charge for mixing	Cwt.	.08		.09
MACHINE TILING (No tile)	Foot	.13		.13
BACK HOE	Hour	7 80		7.90
SAWING WOOD (Chain saw)	Hour	4 25		4 35
POST HOLE DIGGING	Hole	.28		.26
MANURE LOADING	Hour	5 00		4 95
MANURE SPREADING	Hour	3 95		3 95
BULLDOZING	Hour	11 00		11 50

1/ Other arrangements consisted of various combinations of men and equipment causing wide variations between individual reports.

2/ Various combinations of men and equipment were provided, causing wide variations between individual reports

● Farm Women

(Continued from Page 21)

plies to fill the bags

The next meeting of Society 18 will be held on June 19 when the group will be guests of Society 15 at Black Rock Retreat. This meeting will replace the June meeting for Society 18 and there will be no meeting at all in July.

SOCIETY 3

The regular meeting was held May 17, 1969, at the home of Mrs. Raymond Raihl, Ephrata, R D #1 near Mt Ary. Mrs Raihl had charge of devotions Mrs Willie D Stober, president, presided during the business session.

Miss Bernice Wealand, a new member, was received in the Society, and Initiation Service was conducted by past State President, Mrs. Samuel M Mohler. Members decided to conduct the usual food stand at the Ephrata Fair September 23-27, 1969. A \$50 contribution was made to the county project, Half Way House. Members will sew Ditty Bags for the Red Cross Spring Rally, held at Dutch Town & Country Inn.

The outstanding feature for the program was "Outdoor

Pinch That Flower For Full Beauty

Because they want to see that first flower, most gardeners never get full benefit from their summer flower gardens, says a University of Maryland horticulturist

Simply transplanting bedding plants without pinching the tops usually causes the flower to bloom soon after transplanting and then appear to go into a "resting" stage, adds Francis R Goun, Extension horticulturist

If you want to avoid the lag between bloomings, just cut the main stem of each plant in half immediately after planting. This type of pinching will help establish a balance between roots and branches and encourage other branches to develop near the base of the plant

This will result in a denser, more compact plant that can support large numbers of flowers.

Cooking." Mrs. Robert Gregory, meal was the demonstration Lititz, R D #1, home economist. made on the charcoal grill demonstrated the cooking on The next meeting will be held the spacious lawn of the Raihl June 21, at the home of Miss home. An excellent nutritious Mary and Ada Royer.

NURS-ETTE

AUTOMATIC CALF FEEDERS

NURS-ETTE FEED

ALSO NURS-ETTE PARTS & SERVICE

YOUNG BROS.

Ray M. Young, Mgr.

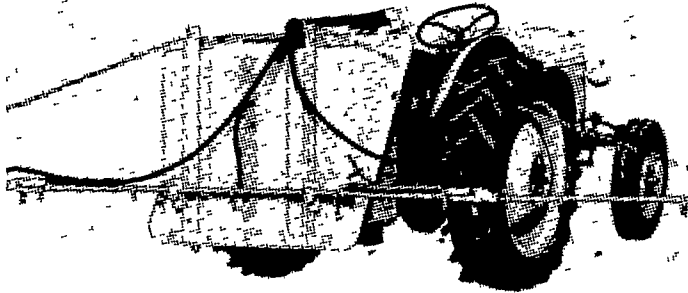
R. D. #1, Peach Bottom

Ph. 717-548-2462

MYERS GlasStran

Tractor - Mounted P. T. O.

SPRAYER



- Myers GlasStran P.T.O. sprayers are designed to handle a great many different spraying jobs.
- Available in 3, 6 and 12 gpm sizes, pressures to 500 lbs.
- Has 21 ft. boom complete with handy 7 position Selector Valve. Selector Valve handle dials desired boom sections.

Also selection of trailer type sprayers available with nylon roller and/or piston pumps.

See us for complete details

LESTER A. SINGER

"Lancaster County's Only Dealer Specializing In Sprayer Sales and Service"

Ronks, Pa.

687-6712

TRY A CLASSIFIED AD!

DISTRIBUTOR FOR

LISTER DIESELS

SALES - PARTS - SERVICE

We sell from 3 1-2 K. W. to 100 K. W. Generator Sets.



Lister Diesels can be mounted on various pieces of equipment.

FREE ESTIMATES ON SET-UPS

Such as: Irrigation, Refrigeration, Electric Generating Plants, etc.

Also Creamery Package Bulk Milk Tanks

C. B. HOOBER & SON

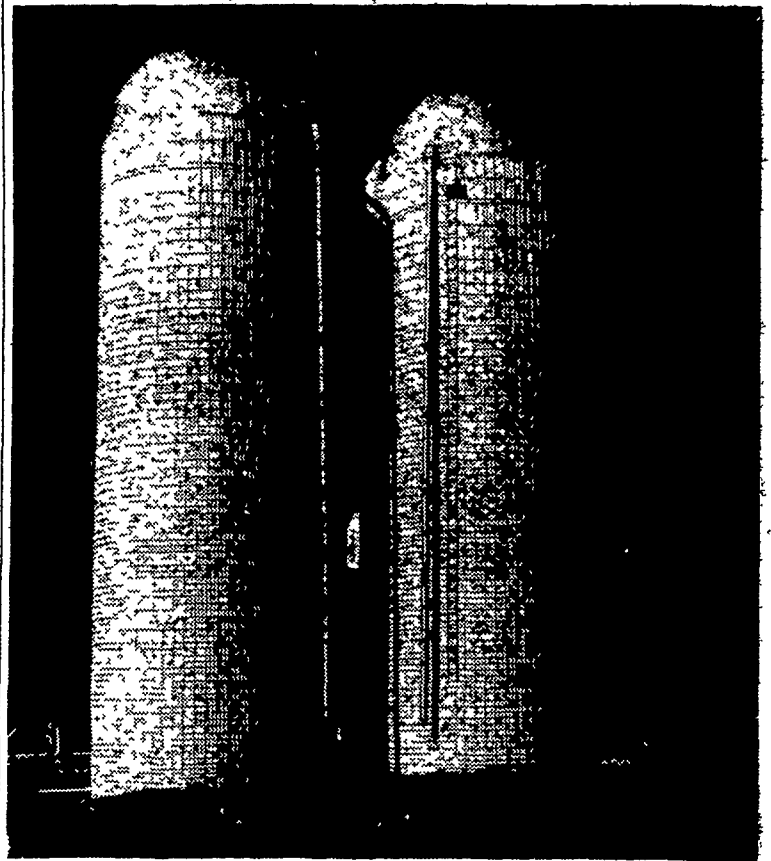
Intercourse, Penna.

Phone: 768-8231

LANCASTER SILOS . . .

Your Best Buy

A LANCASTER WET-CAST VIBRATED STAVE



Save Money on Feed Costs . . . Farm Easier, More Profitably . . .

Before You Buy Check With

Leroy Zook, Salesman

C. B. HOOBER & SON

Intercourse

717-768-8231 or 215-593-5793

Manufactured in Leola by

LANCASTER SILO COMPANY

2436 Creek Hill Road, Lancaster, Pa. 17601