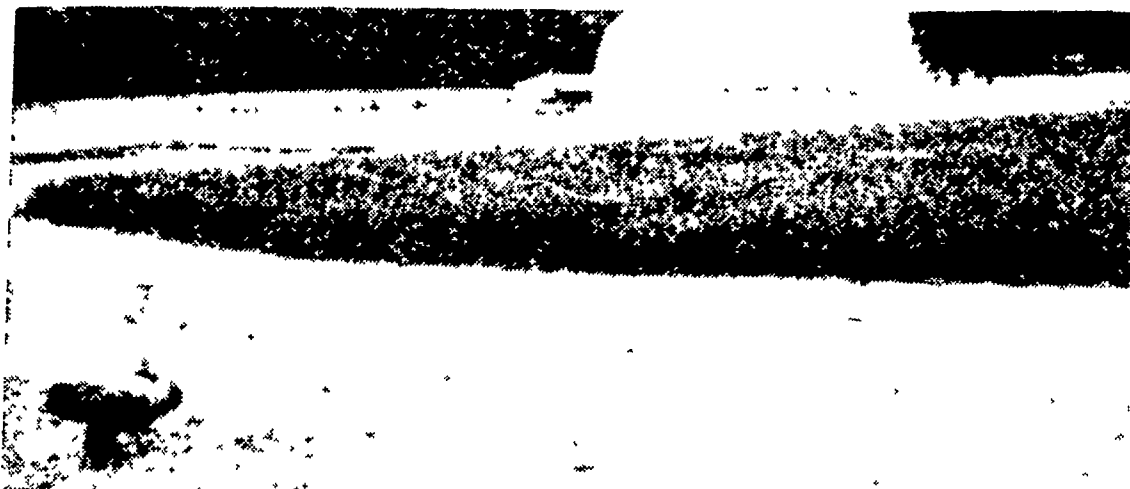


MAKING CROPLAND TERRACES on an Amish farm at Paradise, RD #1. The work was being done Monday as part of county conservation practices. L. F. Photo



CROPLAND TERRACES are inspected by Orval Bass, County Conservationist, on the farm of Jonas Nolt, Peach Bottom RD #2. L. F. Photo

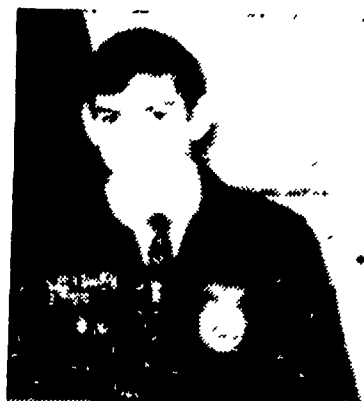
● Local Farmers

(Continued from Page 5)

Much of the responsibility for directing county conservation lies with the local directors of the Lancaster County Soil and Water Conservation District. A subdivision of state government, they organize and manage the protecting and improving of the county's soil and water.

To do this they cooperate with many organizations and agencies. The Soil Conservation Service headed locally by Bass and his assistants, Abner Houseknecht and Clement Squires, Jr., plan the practices on the farm. The Agriculture Stabilization and Conservation Committee headed by Fred Seldomridge, administers the funds of the Agriculture Conservation Program by which government reimbursement is made for individual development of diversion terraces, contour strips, construction of ponds, sod waterways, and drainage systems.

In 1968 a total of 130 landowners became cooperators with the District, making a total of 1458 cooperators using conservation practices on 154,238 acres of Lancaster County land. Diversion Terraces totaled 9,154 ft, grassed waterways, 332 acres, cropland terraces, 47,763 ft, pasture and hayland planting and renovation, 158 acres, stripcropping, 860 acres, and tile drains, 42,281 feet.



Jeffrey Pfautz

● Pfautz

(Continued from Page 1)

the basis of individual project work in their local clubs," Mintner said. "They were selected from among the 4,000 members who participate in 4-H Conservation projects."

The tour is sponsored by the Pennsylvania Association of Soil and Water Conservation District Directors in cooperation with the Cooperative Extension Service State Soil and Water Conservation Commission, and U.S. Soil Conservation Service Funds for the awards program are provided by the Sears, Roebuck Foundation.

Club Honored

Pfautz's club, the Northern Soil and Water Conservation Club, was also honored in the Pennsylvania 4-H Conservation Awards program. They were one of five clubs in the state who compiled outstanding records in the conservation project work during 1968-69.

● Farm Calendar

(Continued from Page 1)

Foundation Directors meet, Farm and Home Center.
 Thursday, May 22
 7:30 p.m.—County-Wide 4-H Dairy Club meeting, Farm and Home Center.
 Friday, May 23
 1:00 p.m.—County FFA Small Engine Contest, Ephrata High School.

Saturday, May 24
 8:30 a.m.—Rocking G Stables Quarter Horse Show, Bareville.

The local club, with a membership of 18, conducted a trash and litter cleanup project along a two-mile area of Route 322. They also assisted with a tree, shrub, and ground cover project at the recently completed Lancaster County Farm and Home Center. The club leaders are Aaron Stauffer, Paul Martin and Leroy Pfautz.

The common garden snail has 14,175 teeth, located in its tongue.

AGWAY

**IF PROFITS
 ARE YOUR BUSINESS
 AND CORN IS YOUR CROP
 use the best...**

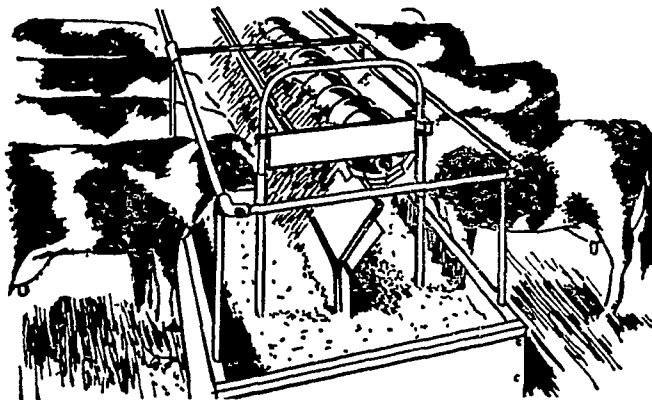
LASSO AND ATRAZINE

**KILLS FOXTAIL, OTHER
 GRASSES AND BROADLEAF
 WEEDS IN FIELD CORN**

Pre-emergent Lasso and Atrazine corrals profit-thieving grasses and broadleaf weeds all in one blow. Clear weeds out of your field corn and you've got a clear trail to big yields — fat profits.

CALL YOUR AGWAY SALESMAN

FEED COWS FAST... ALL AT ONCE



Hinged side of Jamesway Fill-N-Feed grain or silage feeder pulls away from J-trough and auger automatically to dump all feed fast...all at once without feed separation. All cattle get the same quality feed. Eliminates injuries from crowding, shoving.

Choice of manual or automatic feeder, timer or sail switch control. Feeder features gear head gate drive and galvanized steel safety cover. Come in today for complete details.



Designers and Builders of Systems

R. D. 2, Ephrata

Phone 717-354-5374