

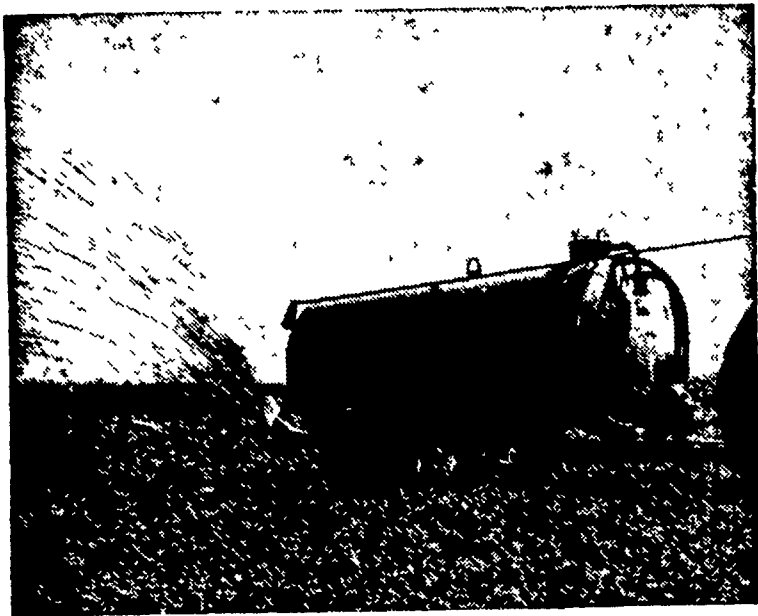
**FHA Banquet Held**

The Annual Mother and Daughter Banquet of Warwick's FHA was held last Monday evening. After the covered dish supper, the presiding president, Karen Bomberger was in charge.

The Installation of Officers was next on the program. Outgoing officers were: President, Karen Bomberger; Vice President, Brenda Siegrist; Secretary, Judy

Snyder; Treasurer, Patti Whitcraft. The new officers installed were: President, Esther Nolt; Vice President, Ida Reiff; Secretary, Judy Snyder; Treasurer, Brenda Siegrist.

Mr. Watson presented Audrey Smith, a senior, with the Banker's Award. Mr. Glenn Eshleman entertained the group with his spectacular pictures.



**"BETTER-BILT"  
LIQUID MANURE SPREADER**

DISTRIBUTED AND SOLD BY

**S. M. MANUFACTURING Co., Inc.**

Owl Hill Road

R. D. 4, Lititz, Penna.

Phone 717-626-8585

Call or Write For Free Demonstration

**FREY FREE STALL**

Lifetime Free Stall Housing



Cut bedding costs 75%, reduce labor for barn cleaning and cow washing; reduce teat and udder injury to the minimum — house your milking herd in free stall housing. Each cow provided a stall for loafing. She won't be stepped on, the rear curb forces manure out into alley for mechanical cleaning or washing. A few minutes twice a day cleans the stalls and curbs, bedding lasts almost forever if your stalls fit the cows. Popular sizes are 6'6", 7' and 7'6". Size 'em by breed.

Our free stall partition may be mounted on wooden head boards or we make a steel divider. Set the legs in 8 to 10" concrete curbs to hold and retain bedding. Stall floor can be soil, sand or gravel. Bedding — straw, sawdust, peanut hulls, ground corn cobs, etc. Should be installed with paved alley surface 8 feet wide for mechanical cleaning or washing.

- 8 Models all steel welded farm and feedlot gates
- 2 Models all steel welded head catch gate

For prices, contact: Fred Frey, Mgr.  
786-2235 (717)

**FREY BROS.**

R. D. #2  
Quarryville, Penna. 17566

**Warwick FFA Members Hear About Poultry**

John Sams, assistant manager of Indian River Hatchery, Lancaster, was a guest speaker at the Warwick FFA Chapter meeting held recently. His main points alerted the members to the future in the poultry industry and how Indian River was hoping to contribute to this future by providing for educational opportunities to interested young men.

Indian River Hatchery is a producer of broiler chicks, both for breeding flocks and for the market. They are the second largest broiler producers in the world. The broiler production in the United States amounted to 2.8 billion last year.

Indian River anticipates to double their broiler flocks in the next year and a half and will need five times as many people to properly manage such an increase.

Indian River is interested in helping students interested in the poultry industry to further their education. The program consists of going to college for a year and then alternating six months on-the-job training and six months in school. While on-the-job, the student would be paid a fixed salary per week.

A student would receive his degree after four and a half years and would have received \$14,500 from Indian River while attending school and working. The student needs to maintain a C plus average to remain in the program.

The only college now co-operating in this plan are: Virginia Polytechnic Institute and West Virginia University. The University of Georgia may enter the program very soon.

A person could work in the areas of production, business research and sales after graduation. His on-the-job training would be in all four of these areas. In addition, to employment in the United States, one could find himself in fifty-two other countries of the world.

Keep your temper. No one else would have it on a bet.

**Chemicals & Sprays**

Many articles are written about the use of chemicals and spray materials in modern agriculture and home gardening. There is little doubt that the proper use of these materials can be beneficial to the grower; it all depends upon the manner in which the chemicals are handled and applied. To the commercial food producer many pesticides are of great help in the production of increased yields of top quality food and fiber. However, to the home gardener in the urban and suburban area, it is not advisable to use some of the chemicals such as weed killers; it is very difficult to apply proper rates for such small areas and there is greater danger of injuring nearby flowers, shrubs, and trees. Clean cultivation is still the best

**Caterpillars**

The Eastern Tent Caterpillars are here and are supposed to be a heavy infestation this summer. We have already noticed some tents or webs in the forks and branches of trees; if permitted to develop, these tents will become full of fuzzy worms with black heads and a black body with a white stripe along the side; They will feed upon the foliage of the trees for several weeks to come. These caterpillars may be controlled by spraying into the tents and in the immediate area with methoxychlor or sevin insecticides. It is not necessary to spray the entire tree. Property owners finding only a few tents may remove and kill the worms by hand

method of weed control for these folks

**Spray alfalfa stubble with Alfa-tox™**



If weevils are active just before cutting, spray the stubble to protect the next crop.

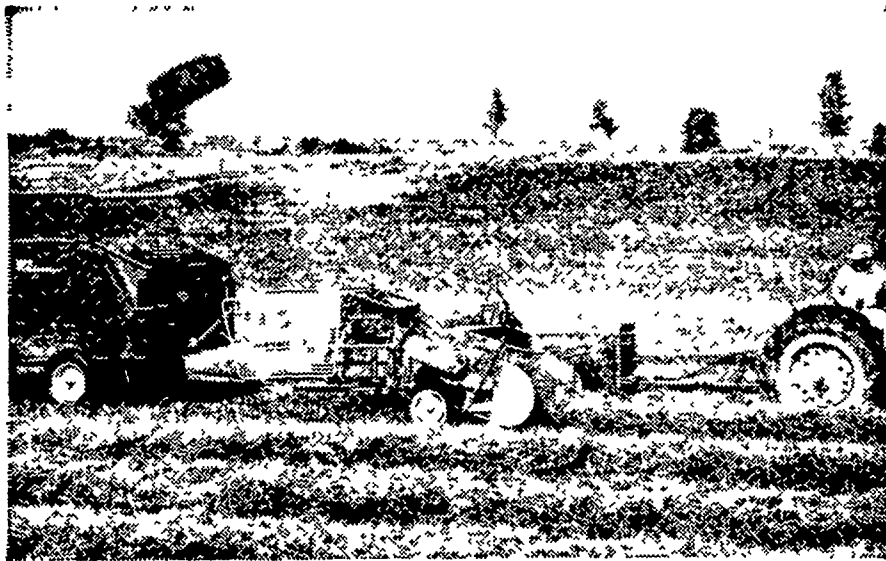
Also check regrowth for signs of feeding. If it occurs, spray Alfa-tox for dependable, long-lasting control.

**P. L. ROHRER & BRO., INC.**

SMOKETOWN, PA.

PH: 397-3539

**Full-sized baler with a compact price**



**John Deere 24-T Twine-Tie Baler**

The John Deere 24-T Twine-Tie Baler has a low price tag on it. And for this low price you get big-baler benefits. You get big capacity. You get accurate tying. You get neat, 14x18 bales that are tied for keeps. You get high-quality construction. You get a baler protected by many safety devices. Have your 24-T equipped with the Bale Ejector and baling and loading become a fast, easy, one-man job. See us for full details on a John Deere 24-T Baler with Bale Ejector. The Credit Plan makes it easy to purchase machines from The Long Green Line.

Wenger Implement, Inc.  
The Buck 284-4141

M. S. Yearsley & Sons  
West Chester 609-2990



A. B. C. Groff, Inc.  
New Holland 354-4191

Shotzberger's  
Elm 665-2141

Landis Bros. Inc.  
Lancaster 393-3906