

Periodicals Division  
W209 Pattee Library  
Penna. State University  
University, Pa. 16802

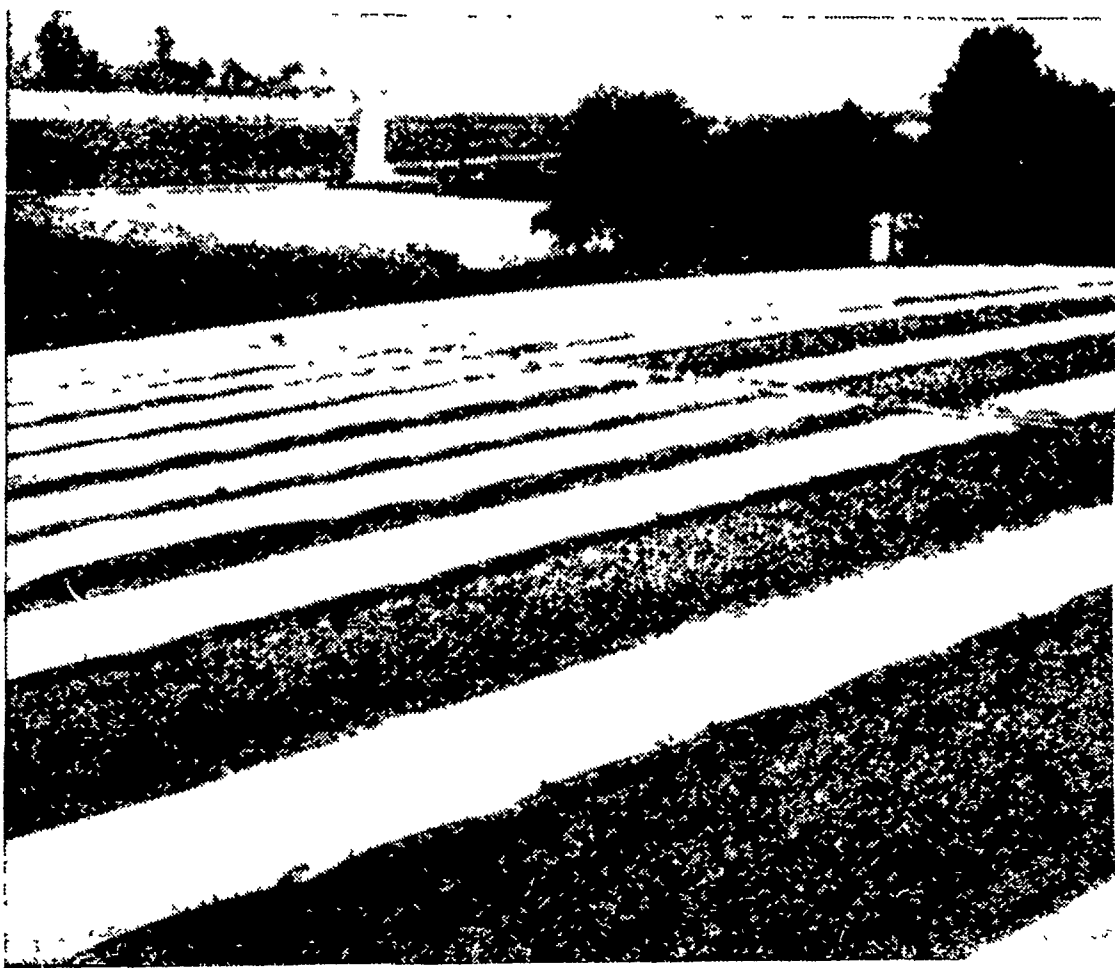
RECEIVED  
MAY 19 1969  
PERIODICALS SECTION  
UNIVERSITY LIBRARIES  
PENNSYLVANIA STATE UNIVERSITY

# Lancaster Farming

VOL 14, NO 25

Lancaster Farming, Saturday, May 17, 1969

\$2.00 Per Year



TOBACCO BEDS READY FOR PULLING are located on the Reuben Martin farm, Ephrata RD 3. LANCASTER FARM-

ING photo was taken early yesterday morning just before plants were scheduled to be pulled L. F. Photo

## Tobacco Planting Started Tuesday

The 1969 tobacco planting season got under way this week with reports from the Giffordale area showing the first plants in the ground Tuesday.

On Friday morning, LANCASTER FARMING visited Reuben Martin, Ephrata RD 3 who was scheduled to plant his first plants yesterday afternoon, and neighbors were coming to pull plants from his beds.

Martin has an ideal place to

raise early plants. His beds, located on the south side of a hill are protected from both the north and the west winds. He usually makes the beds in February when only the top inch of dirt is not frozen.

Seed mostly Penn Bell, is sowed by the end of February but not covered with mulch until a heavy rain has fallen or he has rolled the beds with a lawn roller. He finds waiting to cover the beds helps get the seeds started.

But mostly is the warmer spot that brings on the early plants. Even when you get down to his farm buildings you feel the difference.

He tried some plastic covering this year and says it helps.

(Continued on Page 8)

## Ephrata Boys Excel In Meat Judging

Three Ephrata High School FFA boys won the right Tuesday, to attend state FFA Activities Week as meat judges. They are Jay Zimmerman, Clark Stauffer, and Marlin Bollinger.

The selection was made at the Area FFA Meat Judging Contest held at Kunzler & Co in Lancaster. Top judge in Tuesday's competition was Larry Bacon from York County with a total score of 398.3 points. Bacon is not eligible to go on to the state contest, however, because he was a member of the national team last year.

Following Bacon was Bollinger with 397.3 points. Zimmerman, 379.6 points and Stauffer, 397.3 points. Michael Bankert from York County was fifth with 343.3 points.

The 24 contestants identified 25 retail cuts of meat and judged hog and beef cuts. Activity Days at Penn State is set for July 1-3.

## Nelson Weaver Top Judge In Dairy Products

An Ephrata R1 youth carried the Ephrata FFA Chapter to a clean sweep of the top placings and their 7th consecutive annual win in the area dairy products judging. Nelson Weaver, 14 year old son of Mr. & Mrs. Luke Weaver had the low score of 39.5 in the contest Thursday at Penn Dairies, Inc. The contest involved 32 persons from seven schools in the York-Lancaster County area.

Coming in second was Ricky Pfautz with a score of 44. Warren Hoover, 45, and Dennis Pal, 47.5. All four Ephrata youths are

(Continued on Page 10)

## Pfautz Wins In Regional 4-H Conservation

A local 4-H Conservationist was named a regional winner this week, in the 1968-69 Conservation Awards program. Jeffrey Pfautz, 16-year-old son of Mr. and Mrs. Leroy Pfautz, Stevens R1, was one of 25 youths across Pennsylvania to be selected. He will participate in a three-day tour of agricultural and conservation facilities in northwestern Pennsylvania, June 24-26.

Announcement of the selections were made today by Edward A. Mintmier, assistant State 4-H leader at The Pennsylvania State University, coordinator for the State 4-H Conservation program.

"Regional winners came from 25 counties and were judged on (Continued on Page 9)

## Local Meat Processors Told Of Inspection Law Change

"The United States Department of Agriculture is moving in the direction of relaxing its interpretation of the meat inspection law," a Pennsylvania State Department head said Monday evening.

Speaking to a group of local meat processors and farmers at the Farm and Home Center, Dr. George H. Zacherle, Chief Meat Hygiene Division, Pa. Dept. of

Ag said, "the federal people found they were in a different 'ball game' with the little producer. Eighty-five percent of the meat was processed in federally inspected plants before the 1967 law went into effect. They (Continued on Page 8)

## Farm Calendar

Tuesday, May 20  
7:30 p.m. — Lincoln Community 4-H Club meet, Mt. Airy Fire Hall  
8:00 p.m. — Farm and Home (Continued on Page 9)

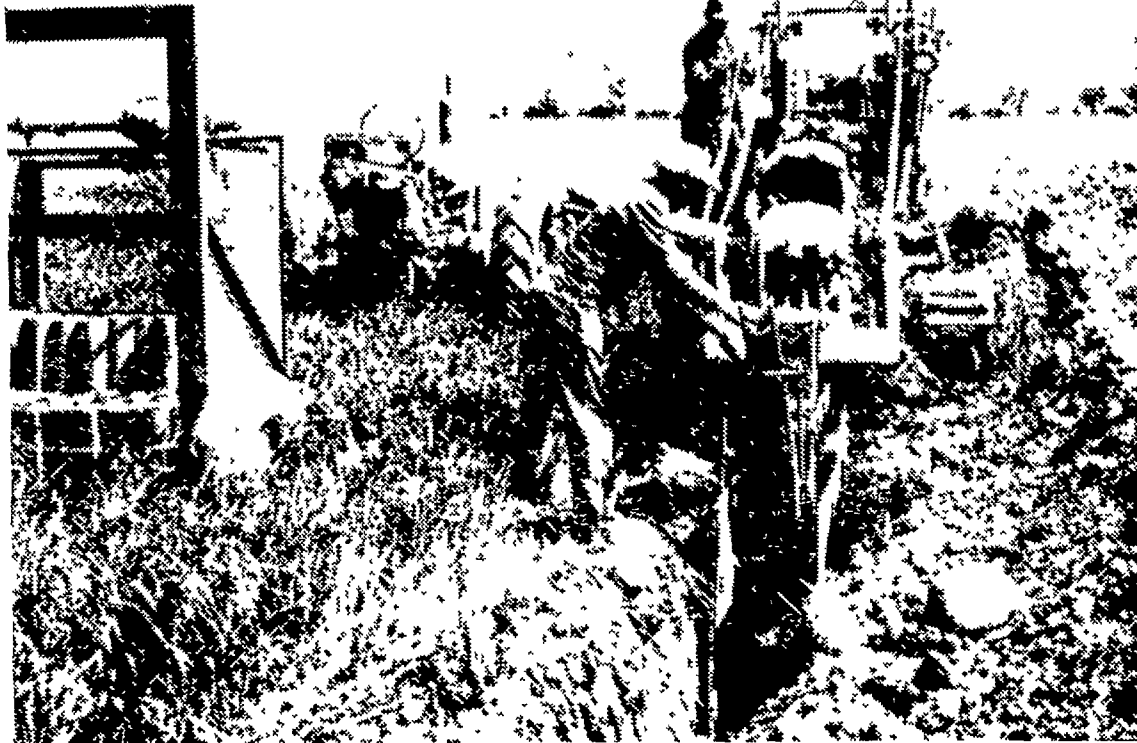
## Local Farmers Cooperate In Soil Conservation

In a series of photographs starting on Page 1 this week, some of the work being done by Lancaster County farmers to conserve the natural resources of soil and water and increase productivity of the land is shown. Lancaster Farming rode with Orval Bass, District Conservationist, Monday, to four local farms where practices are just being installed to improve farmland.

First stop was the Grant Kieffer farm at Goshen where one

of the biggest projects of cooperation in conservation is being undertaken. Kieffer had tiled a 50 acre field ten years ago with concrete drains, but they have crumbled, and now he is laying 12,000 ft of new tiling to drain the underground water. Kieffer said when the drains were working, the field was quite productive growing alfalfa and wheat.

The water was already running on Monday's visit with the (Continued on Page 5)



CONSTRUCTING TILE DRAINAGE on 50 acres at Grant Kieffer's farm at Goshen, as part of Lancaster County's Soil Conservation Program. One of the biggest projects undertaken in the County, the sys-

tem involved 12,000 feet of tiling to drain the underground water. Working the machine is Amos Stauffer (on the machine) and Earl Brubaker.

L. F. Photo