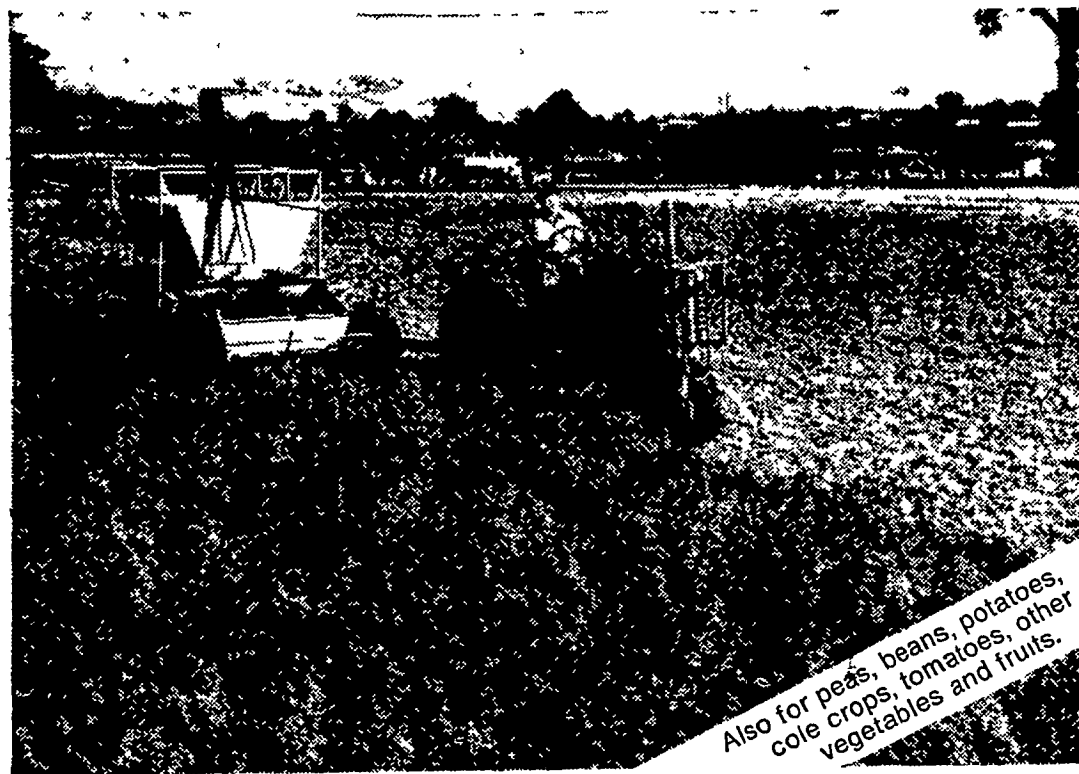




GETTING ACQUAINTED. FFA boys from Rhode Island visit with several local youth at Bart Leaman's home Wednesday evening. They are: (left to right) standing, Jim Ashton and George Brayton. Seated

are Richard DiLonzo, Eugene Pepper, Dave Sweet and John McCullough. Nelson Weaver and Linford Martin from Garden Spot High School are the hosts.

L. F. Photo



Also for peas, beans, potatoes, cole crops, tomatoes, other vegetables and fruits.

Tons more alfalfa per acre for less than \$1.00 worth of new PARTRON™

PARTRON insecticide is a specially formulated methyl parathion. It gives you the fastest and most complete protection. All major foliage insect pests are controlled—Alfalfa weevils, Aphids, Leafhoppers, Spittlebugs, Worms, Plant Bugs, Grasshoppers, Lygus Bugs. With Partron you'll avoid the severe damage caused by alfalfa insects. Alfalfa insects can take 60 to 80% or more of your first cutting. You can't help but gain by using the complete control of PARTRON. Less than \$1.00 per acre is a small investment to insure a profitable alfalfa crop.

There's no reason to lose valuable alfalfa when Partron insecticide is so effective and low in cost
With the quick action of PARTRON you will positively prevent damage and break the life cycle of alfalfa weevils and other destructive alfalfa insects.

The excellent control of Partron helps you to reduce following generations of insects. Your control gets much more effective and economical each time you spray. You can easily afford to keep insect populations down when PARTRON costs so little.

PARTRON Is A **VELSICOL**
Great Haymaker. **PARTRON™**
CALL YOUR **INSECTICIDE**
DEALER TODAY!
VELSICOL CHEMICAL CORPORATION, 341 E. Ohio St., Chicago, Ill. 60611

Use pesticides safely  Read the label, follow directions

VELSICOL

PARTRON IS A TRADEMARK OF VELSICOL CHEMICAL CORP.

PARTRON™ Insecticide Available At

P. L. ROHRER & BRO., INC.

Smoketown, Pa.
Ph. 397-3539

● "Dutch" Meal (Continued from Page 1)

Gettysburg and other tour points were good "But how do I get up and down and out of here?" At the time he had his bus parked in front of Leaman's located between Terre Hill and Center Church. But all in all an enjoyable evening with our boys learning about farm life in Rhode Island and the Rhode Islanders learning how German "Dutch" we are.

For the Rhode Island FFA Chapter from Ponaganset High School in North Scituate, it was their fifth and longest trip. Starting at mid-night Sunday it was scheduled to end late Saturday night. Each youth had strict obligations to meet to go on the tour. John F. Emin, Jr., one of the Vo-Ag instructors in charge, put the cost of the trip at \$1,062 which was covered by chapter activities.

Emin reported Rhode Island with dairy and potatoes as main farming practices but said in their area much of the Vo-Ag emphasis is on horticulture and floral arrangement. Thus, the girl members of the chapter. But one of the girls along on the tour had been the Rhode Island State FFA Public Speaker so the girls weren't only interested in flowers.

For the visiting youth, the local boys had planned a night of recreation at the high school. Then individuals were to take a new friend home to spend the night. Other guests were staying at the Bowmansville Youth Hostel Thursday morning was filled with a visit to New Hol-

● Robert A. Martin (Continued from Page 1)

Homes in Elizabethtown was re-elected secretary-treasurer.

Martin farms 36 acres of corn and fattens 200 head of swine each year. He has 20 brood sows and sells about half of them litters as feeder pigs.

Total poundage of fish caught by commercial fishermen in the Great Lakes has not changed essentially since records began to be kept in 1879. It has varied from a low of 79 million to a high of 146 million pounds. The 1967 catch was 127 million pounds. Changes have occurred, the Bureau of Commercial Fisheries advises, because of more selective fishing, inter-species competition, and attack by the lamprey eel. A pesticide which was introduced to control the sea lamprey is credited with the remarkable recovery of valuable lake trout, salmon, and other game fish in the Great Lakes.

land Division of Sperry Rand including lunch and then Weaver's Poultry, the Amish Ice Cream Farm and several local boy's farms if time permitted.

In all, it was a great time. A great time for exchange of ideas, a great time for making new friends. And of course, a great time for eating. It couldn't be otherwise when Bart Leaman calls out the front door, "Come on in boys, supper is ready."

AGWAY

NEW THIS YEAR!

SUTAN

"THE GRASS-GETTER"

Get both — grasses and broadleaf weeds —
with a per-plant application of
SUTAN/ATRAZINE combination

Call Today For An Agway
Salesman