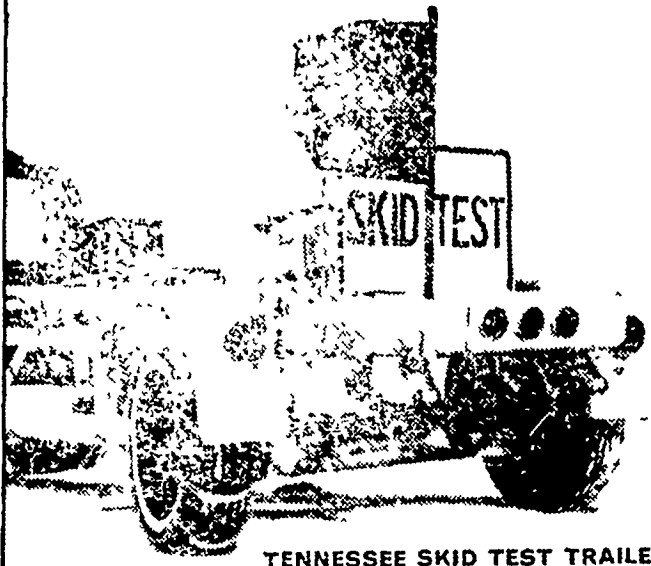
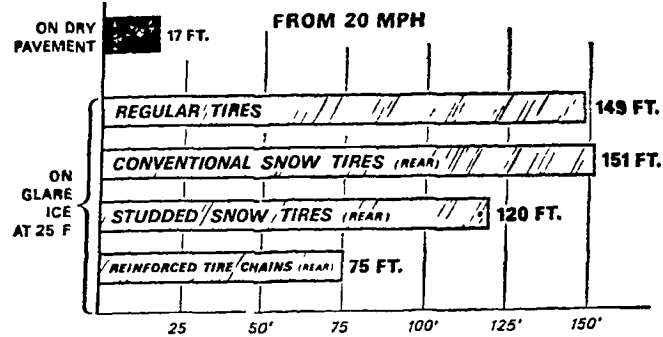


SKIDDING FOR SAFETY



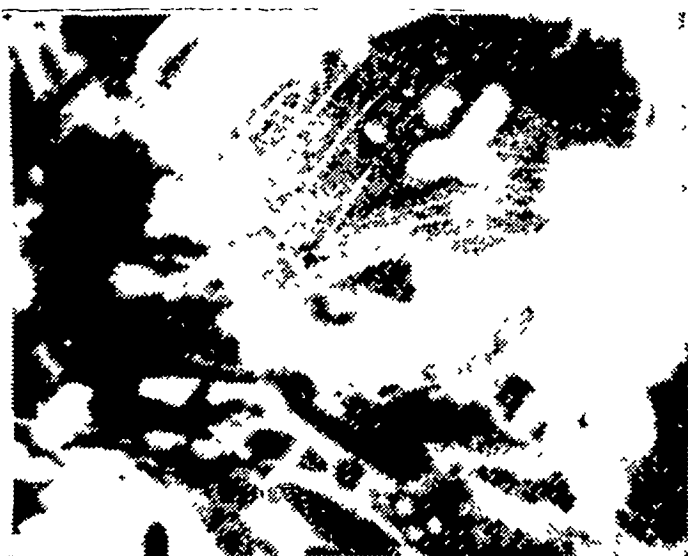
TENNESSEE SKID TEST TRAILER
—one of the devices used by the National Safety Council's Committee on Winter Driving Hazards during its annual winter test project to measure the stopping ability of various types of tires, chains and other equipment.

BRAKING DISTANCES



These findings point up the extreme hazard of driving on glare ice—showing that with regular tires it may take close to nine times as far to stop as on dry pavement. The Safe Winter Driving League cautions drivers that regardless of the type of traction device employed—even with tire chains—far slower than normal speeds are essential on icy pavements.

**For Full Market Reports
Read Lancaster Farming**



When to spray Alfa-toxTM for weevil control.

When 3-5 out of 10 stems show signs of feeding. You'll get more days of control. And cool weather won't turn it off. Get Alfa-tox from us now.

P. L. ROHRER & BRO., INC.

SMOKETOWN, PA.

PH: 397-3539



VISITORS FROM RHODE ISLAND
were guests of the Grassland FFA Chapter Wednesday night at Bartram Leaman's home at East Earl R1. The youths got ac-

quainted around a huge supper and were later shown around Lancaster County by the Garden Spot High School FFA boys.
L. F. Photo

State

(Continued from Page 3)

in behalf of farmers and to supply whatever increased measure of service is needed to provide for the express needs of the consuming public."

He also expressed the hope for a "decentralization of some of the functions of the Department of Agriculture and the assigning of those responsibilities to states which the states can handle

best," observing that a "U.S. Department of Agriculture that attempts to perform all services itself would require a staff of such tremendous size that it is doubtful such an organization could be effective in today's complex urban society."

In behalf of state agriculture officials, Wickham extended an invitation to the agribusiness leaders to join with them in meeting the challenges of the seventies. "We recognize that

through periodic conferences with you jointly or industry by industry, we may well find better solutions to some of the problems that confront us . . . To accomplish this we need continuing liaison with you. We need the benefit of your thoughts and the expertise you possess in your specialized agricultural areas so that the decision making process will be adequately protected from error."

FLYING DUTCHMAN INC.

NEW HOLLAND, PENNSYLVANIA

ANNOUNCES A BREAK-THROUGH IN BOTTOM SILO UNLOADER

A practical unloader for solid concrete, concrete stave and other silos.



Simplicity
built into unit
for less
maintenance

Rugged
construction
assures long
life and
trouble free
operation

#500 series driven by 5 HP motor
#600 series driven by 7½ HP motor

Unit works in low moisture silage and high moisture corn sizes to fit most silos

Authorized distributor



DESIGNERS & BUILDERS OF SYSTEMS

Ephrata R. 2 (Farmersville) Pa. 17522

Phone 717-354-5374